



Kurume City, Japan

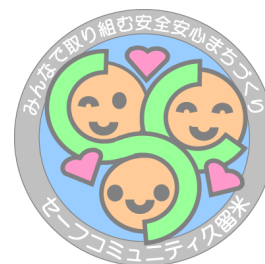


Name of the Community: **Kurume City**

Country: **Japan**

Number of inhabitants in the community: **305,735** (as of July 1, 2013)

Safe Community Programme started year: **2011**



International Safe Communities Network Membership:

Designation year: **2013**

Name of the Certifying Centre: **Center for Community Safety Promotion (Korea)**

http://www.city.kurume.fukuoka.jp/1050kurashi/2020bousaianzen/3100safe_commu/index.html

For further information contact:

Name: Takenao Kuroiwa (Mr.)

Institution: Safety Promotion Section, Collaboration Promotion Department, Kurume City Office

Address: 15-3, Jonan-machi, Kurume-Shi, Fukuoka Prefecture, Japan

Zip code: 830-8520, Japan

Municipality/ City: Kurume City

Country: Japan

Phone: +81-942-30-9094

Fax: +81-942-30-9706

E-mail: anzen@city.kurume.fukuoka.jp

<http://www.city.kurume.fukuoka.jp>

The program covers the following safety promotion activities:



For the age group

Children 0-14 years:

Home:

- Brochure of infant accident prevention
- Training workshop on safety of infant
- Life-saving training class
- Young Telephone

Traffic:

- Traffic safety training class
- Colored pavement in sidewalk on school route around the school
- Barrier-free Walking Space Network Project

School:

- Anonymous questionnaire survey and education consultation
- Distribution of checklist for Home Use
- Teachers' workshop
- Colored pavement in sidewalk on school route around the school
- Project on use of school social workers
- Child watch activity
- Traffic safety training class

Sports:

- Sports-related lecture meeting
- Inspection and repair of play equipment at parks and children's amusement parks

Leisure:

- Inspection and repair of play equipment at parks and children's amusement parks
- Swimming school for children who cannot swim
- Child watch activity

Youth 15-24 years:

Home:

- Life-saving training class
- Young Telephone

Traffic:

- Traffic safety training class
- Short course for students commuting by motorbike

Occupational:

- Labor consultation

School:

- Short course for students commuting by motorbike
- Young Telephone

Sports:

- Sports-related lecture meeting
- Inspection and repair of play equipment at parks and children's amusement parks

Leisure:

- Inspection and repair of play equipment at parks and children's amusement parks

Adults 25-64 years:

Home:

- Life-saving training class

Traffic:

Barrier-free Walking Space Network Project

Occupational:

- Labor consultation

School:

- Teachers' workshop

Sports:

- Sports-related lecture meeting
- Inspection and repair of play equipment at parks and children's amusement parks

Leisure:

- Inspection and repair of play equipment at parks and children's amusement parks

Elderly 65+ years:

Home:

- "Safety Registration" and subsidizing the charge for using the location search service
- House renovation project for the elderly

Traffic:

- Silver Safety School
- Barrier-free Walking Space Network Project

Sports:

- Inspection and repair of play equipment at parks and children's amusement parks

Natural Disaster:

- Disaster volunteer training session
- Kurume City comprehensive Disaster Preparedness drill
- Promotion of support plan for disaster vulnerable people

Other:

- Assistance to homeless people

Violence prevention (intentional injuries):

- Installation of security lights and security cameras in busy areas
- Installation and maintenance of security lights
- Women's consultation (including DV consultation)

Suicide prevention (self-inflicted injuries):

- Training session for family doctors of how to approach depression
- Training session for gatekeepers
- Mental health welfare consultation (Mental Health Consultation)

Programs aiming at "High risk-groups":

Children vulnerable to abuse

- Community cooperation to visit homes with infants
- Salon visits to junior high schools
- Orange ribbon making sessions by children

Women vulnerable to DV

- Raising awareness of gender equality and DV prevention
- Improving DV prevention education at schools, etc.
- Reinforcing a workshop for medical personnel
- Promoting of activities for victim support at medical institutions
- Improving a workshop for personnel engaged in child-related services
- Studying support for psychological and social rehabilitation of victims
- Implementing the telephone hotline for children
- Workshops for promoting understanding toward children of DV victims
- Educational support for children of DV victims

Elderly vulnerable to abuse

- Holding lectures and seminars about abuse and dementia
- Training course of Dementia supporters
- Workshop on abuse prevention for caregiving service provider employees
- Establishing the community comprehensive care system
- Holding classes for family caregivers
- Forgetfulness prevention checkup

Elderly vulnerable to injury caused by falling

- Preparation of brochure about falling
- Implementation of prevention programs to avoid long-term care situations
- Support of community activities to maintain health and physical strength

Persons at risk of suicide

- Training sessions for gatekeepers
- Workshop of family doctor depression approach
- Provision of suicide liaison council of prevention
- Implementing the one-stop service consultations

Persons at risk of injury from natural disaster

- Active information provision to promote registration in the list
- Preparation of individual response plans for vulnerable people during disaster

Programs aiming at "High risk- environments":

Potential flood areas along the Chikugo River, etc.

- Preparation of community evacuation plan
- Distribution of the evacuation support maps

Places at risk of sediment disaster (special damage potential zone of sediment disasters, etc.)

- Preparation of community evacuation plan
- Distribution of sediment disaster hazard maps
- Distribution of receivers of urgent notice Disaster Preparedness FM radio

Surveillance of injuries:

Planning of continuous data collection

Basically the medical institutions and administrative agencies will collect the following data each year to create a sustainable system for the data configuring the Injuries Surveillance. In addition, questionnaire surveys will be periodically collected and analyzed.

Data configuring surveillance		2011	2012	2013	2014	2015	2016	2017
Data from medical institutions	(1) Medical institution data	●	●	●	●	●	●	●
Data from administrative agencies	(2) Demographic statistics	●	●	●	●	●	●	●
	(3) Police statistics	●	●	●	●	●	●	●
	(4) Ambulance call-out data	●	●	●	●	●	●	●
	(5) Child Consultation Center consolation records	●	●	●	●	●	●	●
	(6) Home Child Consultation Section consultation records	●	●	●	●	●	●	●
	(7) Gender Equality Promotion Center consultation records	●	●	●	●	●	●	●
	(8) Number of consultations to Consumer Affairs Center by persons with multiple debts	●	●	●	●	●	●	●
	(9) Number of mental health consultations to Preventive Health Section	●	●	●	●	●	●	●
	(10) Survey by Health Section	●	●	●	●	●	●	●
	(11) Japan Sports Council Disaster Relief Funds data	●	●	●	●	●	●	●
Questionnaire surveys	(12) Survey on Actual Situations of Injureis (carried out approx. every 3 years)	●			●			●
	(13) Kurume City Citizens' Awareness Survey (carried out approx. every 3 years)	●			●			●
	(14) Kurume City Next-generation Parenting Support Needs Survey (carried out approx. every 5 years)			●				
	(15) Factual survey of the elderly (carried out approx. every 3 years)			●			●	
	(16) Survey of citizen awareness regarding Kurume City gender quality (carried out approx. every 5 years)				●			
	(17) Questionnaire for students regarding safety given (carried out approx. every year)	●	●	●	●	●	●	●

Numbers per year: **3,500** (Emergency medical services (EMS) records)

Population base: **305,735** (as of July 1, 2013)

Started year: **2011**

Staff



Leader: Takenao Kuroiwa

Number: 9

Professions: City Office worker

part-time or full-time: part-time 1 and full-time 8

Permanent: 8

Temporary: 1

Organization:

Specific cross-sectoral leadership group for safety promotion

- Kurume Safe Community Steering Committee
- Task forces for Kurume City Safe Community
- School District Community Organization

General public health/health promotion group:

- Kurume Safe Community Injury Surveillance Committee
- Kurume University Hospital
- Kurume Medical Association
- Kurume City Public Health Center

International commitments

Study visits:

- Participation in the SC traveling study seminar in Jeju Island, South Korea (Jun. 2012)

Participation in Safe Community conferences:

- Participated in Japan Institution for Safe Communities anniversary Symposium and ISS(International Safe School) Certifying Center Designation Ceremony in Osaka, Japan (Dec. 2011)



- Participated in and gave a presentation at the 6th Asian Regional Conference on Safe Community in Toshima, Japan (Nov. 2012)

Other:

- Accepted Korean Communities' visit for Kurume's on-site evaluation on Aug.6-8, 2013

