



2009
Hsin-Kang
Safe Community Report

“Helmet” has never occurred to farmers when they got on their scooters to transport the vegetable, because of the belief of “it was just a short distance.” or “it was such a hot day.”

We still live close to the collapsed ponds, and wish that “as long as we didn't get too close, it would not be dangerous.”

However, we finally realized hazard is everywhere when a car accident happens and someone falls into the lake.

The injury caused by an accident is unpredictable, but we can prevent the accident from happening.

**Application to Become a Member of
the International Safe Community Network**
for International Designation as a Safe Community by the WHO
Collaborating Centre on Community Safety Promotion

**Hsin-Kang Township, Chiayi County,
TAIWAN**

October 2009

吳容輝 Wu, Ronghui
Convener,
Hsin-Kang Community Safety Promotion Committee
Committee
Vice Magistrate, Chiayi County Government
Chiayi County, Taiwan

張秀安 Chang, Xiuan
Chairman,
Hsin-Kang Community Safety Promotion
Mayor, Zhongzhuang Village,
Hsin-Kang Township, Chiayi County, Taiwan

Preface

Chiayi County started to promote the safe community program since 2002, and accomplished the international certification for Alishan Safe Community as a demonstration. After that, the agricultural type community – Hsin-Kang Community followed its footsteps since 2006. After three years of operation with the experience of Alishan, the residents of Hsin-Kang followed the spirit of six indicators of international safe community and successfully performed it in the community. In the meantime, the agencies from the county government assigned the director of each bureau, instead of the chief, in order to fully accommodate the needs of community safety promotion committee during the meeting, and also provide efficient cooperation based on the fully understanding of the community's needs. Chiayi County has been promoting community safety for a long time. We have successfully combined the help from industry, academia and government to create the most efficient collaboration. The injury issue of community has been recognized and resolved by the resident, which eventually raised the awareness of safety. We gradually learn the foreign safety tactics as we work on improving our safety, which is the best example for living and working safely.

Wu, Ronghui

Convener, HKCSPC / Vice Magistrate, Chiayi County Government

Why do we want safe community? The thought comes from the idea of global village. When the incident of 911 happened, it really shocked me. It turns out that when we are pursuing civilization, we leave the respect, right attitude, and law abiding idea we should have in behind. Therefore, we hope that through the safe community program, we will be able to picture a safe life in the future. The villagers can stay away from danger; improve the long concerned traffic issue, elderly's drug safety, farmers' heat stroke prevention, campus safety, and new immigrants' life safety etc. We want to see our residents with a smile on their faces because of a sense of safety.

Chang, Xiuan

Chairman, HKCSPC

Mayor of Zhongzhuang Village, Hsin Kang Township

Contents

Preface

Content

I. Introduction

II. Goals

III. Hsin-Kang Safe Community Program

III-1 An Infrastructure based on partnership and collaborations, governed by a cross-sectional group that is responsible for safety promotion in their community;

III-2 Long-term, sustainable programs covering both genders and all ages, environment, and situations;

III-3 Programs that target high-risk groups and environments, and programs that promote safety for vulnerable groups;

III-4 Program that documents the frequency and causes of injuries;

III-5 Evaluation measures to assess their programs, processes and the effects of change;

III-6 Ongoing participation in national and international Safe Communities networks.

IV. Our Commitment

I. Introduction

Hsin Kang Township, which has an area of 66.0495 square kilometers, is located at northwest side of Chiayi County in Taiwan. There are 23 villages in the township, with a total of population of 35,192 residents (until June 2009). The township is on the north side of the



The map of 23 villages in Hsin-Kang Township

Chianan Plain with very flat terrain. There are no industrial resources other than the Formosa Plastic in the township. Agriculture is the main local industry. Hsin Kang Fongtian Mazu temple is the local religious center, so Hsin Kang is the end point of Dachia Mazu's tour on the third lunar month of every year, which is a very important and lively local activity.

Hsin Kang Township is always the pioneer on promoting all kinds of community movement in Chiayi County. Starting from 1987, the community is actively working on the local development and cultural heritage. In 1999, we started to promote caring for children's health. In 2003, we combined with the local community development association for all kinds of health promotion activities. During the process of developing community, we found out the population of elderly and new immigrant increase dramatically. Until now, the population for elderly has reach 5,820 people, and 622 people for new immigrant. The elderly has encountered more and more automobiles when they go out. As they grow older, the home environment did not change mutually. On the other hand, the new immigrants are facing the difference in language and culture, and eventually bring up the problem of life adjustment and domestic violence. Also, during the Mazu tour on the third lunar month every year, there are hundreds of thousands pilgrims entering Hsin Kang. The residents and pilgrims were often

injured because of the discharge of a large amount of fireworks as the tour goes by. Therefore, the safety issue has gain public major focus.

According to the top ten leading cause of death of Chiayi County in 2007, injury is the fifth death cause. For every 100,000 people, there were 38.7 people died because of injury. Therefore, how to prevent the injury from happening is something Chiayi County residents should care about. On the other hand, when we look at the historical top ten leading cause of death in Hsin Kang Township, we also found out that injury has always been the top five since 2004. Hence, we started the promotion of safe community program in 2006, and hope to reduce death rate through the power of community.

The Hsin Kang Township will promote the program with short, medium, and long-term goals. The reason for picking Zhongzhuang and Guming Village to be our first demonstration areas are that both villages are on the major traffic route to other townships in the near by County. Other than that, these areas play a major part in the vegetable production in Taiwan. About 40% of nation’s small package vegetable is produced here, which brings in the heavy traffic from transporting goods. Also, both Zhongzhuang and Guming Villages are also the place where Dajia Mazu must pass through during the tour. The lively ritual brings in lots of crowds and fireworks in town, which often leads to injury. Hence, starting the safe community program in Zhongzhuang and Guming Village is our first choice. The program will promote to all of the villages in the entire township later on. Our long-term goal is to promote the program to other 18 townships in Chiayi County.

The following is the community information of Zhongzhuang Village and Guming Village.

Demographic Analysis

The total population for Zhongzhuang and Guming Villages were 3,508 people. Among them all, 17.8% of population are elderly over 65, and 16.18% are children under 14.

Village	Neighborhood	Household	Male	Female	Total
Zhongzhuang Village	20	555	1,047	902	1,949
Guming Village	22	443	824	735	1,559
Total	42	998	1,871	1,637	3,508

Source: Hsin Kang Township Household Registration Office / May 2009

Industrial Economy

Zhongzhuang Village and Guming Village play a very important role on vegetable production in Taiwan. The main crops are water spinach, lettuce, and all kinds of small package vegetables. Its economy is mainly supported by selling vegetables.

Education Resources

There is only one elementary school, Guming elementary school, in this area.

Environmental Resources

1. There are four ponds within the Zhongzhuang Village. It used to be served as a public water supply, irrigation, and flood control. Later, due to the improvement of tap water system and a better flood control system, the ponds are now rented to people who cultivate fish. Two ponds in the village are now become the center of villagers' life. The construction for green landscaping and recreation project in 2003 built a wooden plank trail along the bank of the ponds. However, the heavy rain has seriously damaged the wooden plank trail, and part of the road began to collapse. The safety becomes a serious issue.
2. There are no other public assets in Guming Village other than the activity center. A newly designed art park was constructed in 2007, which becomes a place for villagers to gather and chat. The village has a very prosperous religious culture. During the Mazu tour on the third lunar month of every year, lots of pilgrims come in and they are prone to injury because of the unfamiliarity of the environment.
3. After newly building the major roads that go through Zhongzhuang and Guming Villages to connect other towns and widening the Chia 74 lines in the village, a closely connected transport network was formed. However, this also brought a huge impact on villagers' living environment. While the elderly are taking a walk or children are on their way to school, the scene that lots of trucks and commercial vehicles roar beside elderly or children is not what we want to see.

II. Goals

2.1 National Goals

Injury is a very important public health issue in Taiwan. The death caused by traffic injury dramatically decreases when the government passed the mandatory helmet law in 1997. It leads to the ranking change among the top ten death causes from the third to the fifth. This fact makes us believe that injury prevention can have immediate effect. However, such results mainly come from the cities or townships that fully implement the mandatory regulations, which indicate the need to promote injury prevention in the community.

Among all kinds of injury, traffic accidents are still the main reason that causes death and hospitalization. Nevertheless, other causes of injuries are also severe, especially injuries that occur on the elderly and children. Such injuries have not received enough attention and not sufficiently contained. On the other hand, injuries like suicide and violence are rising in the recent years. Now, they are both in the top ten leading cause of death. Consequently, the prevention of injury is an urgent task national wide whether the injury is accidental or deliberate.

We learned that developing safe community is the only way to implement injury control and promote safety through the learning experience domestically and internationally. Therefore, we have selected four different types of communities to promote the safe community program since 2002. Our goal is to reduce the accidental or deliberate injuries through the power of community, and remove it from the top ten causes of death. More over, we want to create a culture of safety, so that safety becomes the most fundamental requirement of our life, the most important element in our work place, and the most essential condition in our leisure time.

2.2 Area Goals

Injury is the fifth cause of death for Chiayi County residents. Through the conference of injury prevention and safety promotion, the government of Chiayi County will choose the priority issues. Then we will combine the resources of different agencies to promote all kinds of injury prevention, in order to reduce the injury from happening and save life.

2.3 Local Goals

After Alishan Three Southern Village in Chiayi County got the international safe community certification, Hsin Kang Township will continue on with their development experiences, and follow the six indicators for safe communities. We will bring the concept of safety to the community residents through advocacy, education and safety promotion programs. Then combine the concept of safety with life, creating a safe culture in the community and a safe living environment for Hsin Kang Township.

III. Hsin-Kang Safe Community Program

3.1 An infrastructure based on partnership and collaborations, governed by a cross-sectional group that is responsible for safety promotion in their community.

In 2006, Hsin-Kang safe community program started after they received the support of the Bureau of Health Promotion, Department of Health, Executive Yuan. After three years of operation, Hsin-Kang Community has achieved six indicators of international safe community and successfully performed it in community, which included the establishment of Hsin-Kang Community Safety Promotion Committee (HKCSPC for short), the establishment of injury surveillance system, introducing five priority safety promotion issues, proposing long-term safety promotion programs, improving the risk factors for high risk groups, and sharing and learning with domestic and international communities.

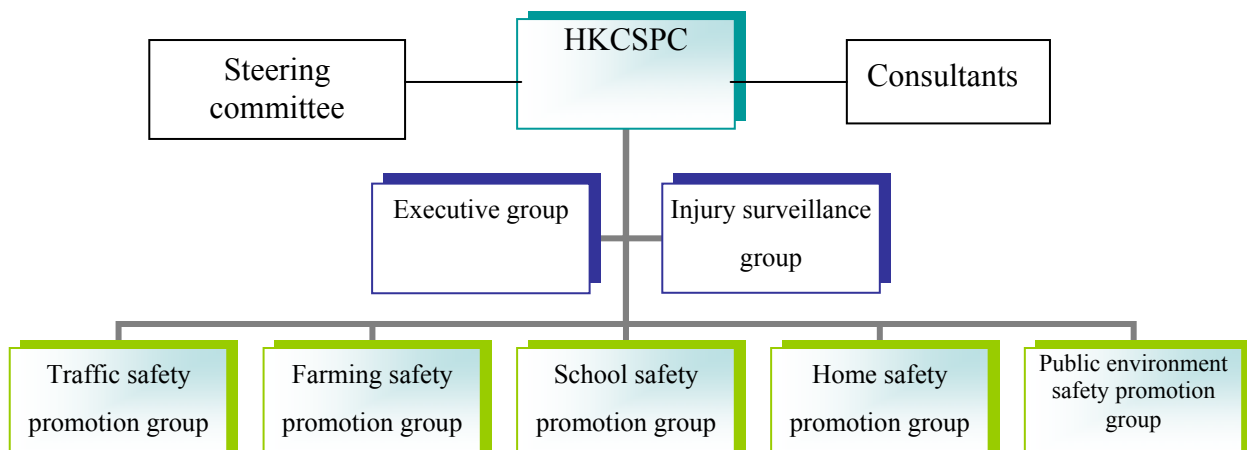
The following is the Hsin-Kang safe community program:

3.1.1 Hsin-Kang Community Safety Promotion Committee: Integrating the External and Internal Resources.

The preparation of Hsin-Kang Community Safety Promotion Committee started in the beginning of 2006. Using Hsin-Kang Foundation of Culture and Education as the development base, with the help of Southern Region Support Center, Taiwanese Community Safety Promotion Center, we invited cross-sectional groups that are related in town to join. The committee was officially formed on July 7th, 2006.

The organization chart of HKCSPC is shown in Figure 1. We received the supervision and assistance from steering committee and consultants. The committee includes members from the industry, academia, government agencies, non-governmental organizations, and the local residents. The mayor of Zhongzhuang Village serves as the chairman, and the mayor of Guming Village as the vice chairman. In the committee, we set up five working groups, including public environment safety, traffic safety, farming safety, school safety, and home safety. We also have an administrative and injury surveillance group.

Figure 1. HKCSPC Organization Chart



3.1.2 Members and their Duty

■ **Steering Committee**

Members: Vice Magistrate, Chiayi County Government

Directors of Educational Dept., Civil Affairs Dept., Agriculture Dept., Social Affairs Dept., Chiayi County Government

Director-General, Chiayi County Police Bureau

Chief, Chiayi County Fire Bureau

Director-General, Chiayi County Transportation Bureau,

Director, Chiayi County Environmental Protection Bureau

Director-General, Chiayi County Health Bureau

Director, Animal Disease Control Center of Chiayi County

Duty: Supervising HKCSPC to implement the safe community program, and assist with resources.

■ **Consultants**

Members: Taiwanese Community Safety Promotion Center (TCSPC)

Southern Region Support Center, TCSPC

Chiayi Christian Hospital

Tainan District Agricultural Research and Extension Center

The International Lions Club of Hsin-Kang, Chiayi County

Hsin-Kang Foundation of Culture and Education

Chiayi County Fuyuan Services Association.

Duty: Helping and supporting HKCSPC to implement the safe community program, and assist with resources.

■ **Executive group**

Members: Chiayi County Fuyuan Services Association

Duty: Developing, coordinating and evaluating the entire program and being responsible for the committee's accounting and paper works.

■ **Injury surveillance group**

Members: Health Center of Hsin-Kang Township

Ye's Chinese Medicine Clinic

Lee Long-Ju Clinic

Chen Jin-huang Clinic

Community volunteers

Duty: Collecting injury data, analyzing injury data regularly, and providing reports during the community group conferences to find safety issues and develop solutions or assess effectiveness of the implementation.

■ **Traffic safety promotion group**

Members: Hsin-Kang Police Station, Hsin-Kang Fire Station, and community volunteers.

Duty: Advocating projects for traffic safety promotion, also reviewing and seeking for resources to improve dangerous sections and facilities in community.

■ **Farming safety promotion group**

Members: Hsin-Kang Farmers' Association, Vegetable sale manager, and community volunteers.

Duty: Enabling farmers to use farming machinery, fertilizers, and pesticides safely, as well as maintaining the safety of work place.

■ **School safety promotion group**

Members: Guming Elementary School, and Fairytale Kindergarten.

Duty: Promoting safety awareness to children from kindergarten to grade 6. Teaching students to avoid danger, and also learn how to protect themselves through the interaction between teachers and students. Letting the children become the seedling of safe community, and nurture them to become the candidate of the Hsin-Kang safe community promoter.

■ **Home safety promotion group**

Members: Guming Village Elderly Club, Zhongzhuang Village Elderly Club, and community volunteers.

Duty: Reducing risks that could cause injury to elderly through inspection and improvement of home environments. Assisting foreign spouses to fit into daily life in Taiwan, and be able to care for family safety.

■ **Public environment safety promotion group**

Members: Zhongzhuang Green Landscaping team, Hsin-Kang Foundation of Culture and Education, General Director of Guming Village, General Director of Zhongzhuang Village, Community volunteers.

Duty: Building up the establishment of public space safety monitoring and reporting system, and also promoting the waters safety with in the village.



3.1.3 The Partnership of Hsin-Kang Safe Community Program

Department \ Program		Transportation safety program	Farming safety program	School safety program	Home safety program	Public environmental safety program
Government Department	Ministry of Interior				*	
	Ministry of Education	*		*		
	Council of Agriculture, Executive Yuan		*			

	Council for Cultural Affairs, Executive Yuan	*				*
	National Youth Commission, Executive Yuan				*	
	Bureau of Health Promotion, Department of Health, Executive Yuan	*	*	*	*	
	Taiwan Chiayi District Prosecutors Office	*			*	
	Chiayi County Environmental Protection Bureau					*
	Chiayi County Health Bureau			*	*	
	Chiayi County Fire Bureau		*		*	
	Chiayi County Police Bureau				*	
	Chiayi County Agriculture Department		*			
	Chiayi County Social Affairs Department	*			*	
	Chiayi County Education Department	*		*	*	
NGO Group	Chiayi County Fuyuan Services Association	*	*	*	*	*
	Hsin Kang Foundation of Culture and Education	*	*	*	*	*
	Zhongzhuang Green Landscaping team	*				*
	Yonglu Temple				*	*
	Yongfu Temple		*	*	*	
	Formosa Plastic Group		*		*	*

Xinyuan Community Development Association				*	
The International Lions Club of Hsin Kang Chiayi County				*	
National Taiwan University Hospital Yun-lin Branch	*		*	*	
Buddhist Tzu Chi General Hospital Da-lin Branch				*	
Chiayi Chang Gung Hospital				*	
Sinyi Real Estate					*
Zhongyi Lions Club				*	
Zhongzhuang Community Development Association	*	*		*	*
Guming Community Development Association	*	*		*	*
Zhongzhuang Aerobics Class				*	

3.2 Long-term, sustainable programs covering genders and all ages, environment, and situations.

Hsin-Kang safe community program focuses on all members and environment to set up a long-term safety program. The major projects are listed below.

Safety Promotion Program	Project	Target Age Group (including both gender)				
		0-6	7-14	15-24	25-64	65↑
School Safety	Improvement on the environment and the safety of the playground	*	*			
	Installation on surveillance systems on campus	*	*	*	*	
	Improvement on the safety device on the electric power door	*	*	*	*	
	Improvement on the environmental safety in the sport facilities area	*	*			
	Installation of the campus safety device	*	*	*	*	
	Improvement on the facilities for disability	*	*	*	*	
	Fire prevention and fire drill training	*	*	*	*	
Traffic Safety	Inspection on dangerous intersection	*	*	*	*	*
	Installation of speed limit signs and lines	*	*	*	*	*
	Installation of reflection mirrors	*	*	*	*	*
	Installation of road signs	*	*	*	*	*
	Regular inspection on original device	*	*	*	*	*
	Tree planting and device installation on dangerous intersection	*	*	*	*	*
	Driver license class for foreign spouse			*	*	
Public Environment Safety	Improvement of waters safety	*	*	*	*	*
	Improvement on the wooden plank trail	*	*	*	*	*
Farming Safety	Workshops for pesticide safety			*	*	*
	Machinery usage safety			*	*	*
	Heat stroke prevention			*	*	*
Home Safety	Elderly safety promotion				*	*
	Inspection and improvement on home environment	*	*	*	*	*
	Helping foreign spouses to adapt the life style and have the ability to care for family's safety			*	*	

3.2.1 School Safety Program

According to the statistics of Campus Security Report Center of Ministry of Education for all schools in 2006, the elementary school students are most prone to sport or play related injuries (22.05%). Since we only have one elementary school in the area, it's easy for use to read through the injury record from school nurse. In 2008, there were 19 injuries caused by fall and the location that occurred was in the playground area and the hallway; 7 cases caused by bumping into other objects, which can be a door, a window, a chair, or a desk of the classroom, or students bumping into each other on the hallway. To focus on the school safety promotion, we implement the following programs.

Project	Began in	Description
Improvement on the environment and the safety of the playground	July, 2006	Installation of safety mats and safety signs in the playground.
Installation of surveillance systems on campus	November, 2006	Installation of infrared sensor monitor at campus corners to assure the safety of students and the traffic.
Improvement on the safety device on the electric power door	August, 2007	Installation of power systems and warning lights to the electric power doors.
Improvement on the environmental safety in the sport facilities area	October, 2007	Installation of safety mats in the sport facilities area.
Installation of campus safety device	August, 2008	Installation of anti-collision silicon on every entrance of classrooms, post safety films on every window.
Improvement on the facilities for disability	April, 2008	Handrails for stairs, ramp and restrooms for disability.
Fire prevention and fire drill training	Semi-annually	Performing fire and earthquake drill with the whole school.
Promotion of transportation safety	2007	1. Road test for the bicycle riders 2. Transportation safety calligraphy competition 3. Transportation safety speech 4. Transportation safety essay competition 5. Transportation safety rules promotion

The Results of the Program

2006

1. Installation of safety mats and safety signs in the playground.
2. Installation of surveillance systems on campus: Installation of the infrared sensor monitor at campus corners to make sure the safety of students and the traffic.



2007

1. Improvement on the safety device on the electric power door: Installation of power systems and warning lights on the electric power doors.
2. Improvement on the environmental safety in the sport facilities area: Finished the installation of safety mats in the areas of horizontal bars, horizontal ladders, and climbers.



2008

1. Safety device in the central hallway: Installation of anti-collision silicon on every entrance of classrooms, post safety films on every window.



3.2.2 Traffic Safety Program

According to the statistics of Campus Security Report Center of Ministry of Education for all schools in 2006, transportation injury was the most common injury that happened to the students outside of school (54.44%). According to the injury data of the Department of Health in the past, motor vehicle related accidents was the leading cause of injury. In order to create a safe road environment, we implement the following programs.

Project	Began in	Description
Inspection on dangerous intersection	2006	<ol style="list-style-type: none"> 1. Point out the danger location in the community to the committee members. 2. Submit an application to the town hall for the improvement program.
Installation of speed limit signs and priority lanes for scooter	2007	<ol style="list-style-type: none"> 1. Establish speed limits and scooter lanes on the major roads in between villages. 2. Establish speed limits and lines on the major roads in the village.
Installation of reflection mirrors	2008	<ol style="list-style-type: none"> 1. Installation of reflection mirrors on the major roads in between villages. 2. Installation of reflection mirrors on the major intersection.
Installation of road signs	2008	Installation of major road signs.

Regular inspection on the original device	2008	Signs, lines, and reflection mirrors.
Tree planting and device installation on dangerous intersection	2006	Tree planting on the intersection of the major roads in between villages and install additional lighting.
Driver license class for foreign spouse	2006	Help the foreign spouse to understand traffic signs and rules, and pass the driving test.

The Results of the Program

Completed in 2007

1. Chia 74 Line is the major road between villages, which also goes through the Zhongzhuang community. The installation of a 40 km/h speed limit sign and traffic light is being nonscheduled patrolled. Since it is a good way to remind the driver of their driving speed, these devices can ensure the safety of drivers and residents.



Completed in 2008

1. Zhongzheng Road is the major road that goes to Zhongzhuang Village and Guming Village. The installation of a 50 km/h signs has been successfully set up other than the traffic light. The signs can remind the villagers to slow down when they are on their way to Sikou Township and Dalin Township.



2. The installation of road signs, reflection mirrors, 40 km/h speed limit signs, and turning signs has been set on the major road from Guming community to Hsin Kang town center.



According to the data from Institute of Transportation, Ministry of Transportation and Communication, we used the number of injury and death and number of automobile accidents to be the severity index for our basis of statistic. Among the top 250 most accident-prone road section, the Chia 159 Line in Chiayi County Hsin Kang Township is on the list. The Hsin Kang transportation safety group has implemented the following improvement plans.

- Set up speed limits and priority lanes for scooter along the road.



- There is a flood prevention road on the Yuemei Lake bridge section along the Puzi River by Hsin Kang Township. This is a very busy detour that leads to Formosa Plastic Industrial Park. There are no traffic signs on the detour because it is under the jurisdiction of the Fifth River Management Office, Water Resources Agency Ministry of Economic Affairs. However, accidents happen here pretty often. When our transportation safety group handed in the proposal in 2007, through the help of Road safety committee, Ministry of Transportation and Communication, we were able to negotiate with the Fifth River Management Office. This dangerous section has handled as a special case. The additional traffic light was installed at the entrance coupled with yellow grid lines, and also set up a flood prevention road signs on the side. The police have also set surveillance cameras on site with more patrolling on this section.







3.2.3 Public Environment Safety Program

Zhongzhuang Pond is the center of the villagers' life, which means they live very closely to the pond. As the living standard increased with the impact of the concept of recreation, the pond became a very popular place for the villager to enjoy after its construction in 2002. Therefore, the safety is always an issue for the villager. The villagers have proposed the following programs targeting on the safety of the pond:

Project	Began in	Description
Improvement of waters safety	2007	1. Setting up buoy around the pond. 2. Setting up dangerous waters signs.
Improvement on the wooden plank trail	2008	1. Repairment of the wooden plank trail 2. Setting up warning signs.

The Results of the Program

2007

Project	Before	After
1. Installation of safety net to the drainage gate of the pond		
2. A total of 6 buoys along the Zhongzhuang Pond.		

3. The wooden plank road of the Zhongzhuang Pond has stairs that goes right into the pond, and people would go there to wash vegetables. Now the stairs are being chained up, with signs on the side to warn the villagers for their own safety.



The wooden plank trail along the bank of Zhongzhuang Pond shows signs of collapse because of time and weathering in 2008. We first pulled up the yellow line as a warning sign, and sought for help with the villagers.

1. The yellow warning line has been pulled up.
2. Invited experts and scholars for the on-site meeting.
3. Seeking for government funding.



The community gathered together to seek for the help of government agencies. According to the conference record of Chiayi County government on June 1st, 2009, the government will fund 3.88 million New Taiwanese Dollar for the improvement of Hsin-Kang Zhongzhuang Pond's wooden plank road. At the end of August in 2009, the improvement will be complete.

3.2.4 Farming Safety Program

2007.07.02 United Daily News: **The fourth case this summer: The death of a 73-year-old female farmer died because of heat stroke**

A 73-year-old female farmer went to the farmland to pick sweet potato leaves at noon two days ago. She was found dead in the irrigation ditch beside the farmland with blisters all over her body. After the testing yesterday, the prosecutors and police believed she passed out after a heat stroke in the middle of a hot day. This is the fourth case of this year in Chiayi County about elder farmer died of heat stroke in fields.

Zhongzhuang Village and Guming Village are very important areas for small package vegetable production in Taiwan. Farmers usually spend a lot of time in their farmland every summer because they need to harvest vegetables in a rush. According to Chiayi weather station, the average temperature in summer in Chiayi area is 32.2 degree Celsius. The tragedy will happen again if long-term exposure is coupled with no prevention. Therefore, we proposed the following programs for the farmers:

Project	Began in	Description
1. Workshops for pesticide safety 2. Machinery usage safety 3. Heat stroke prevention	2006	1. Holding workshops about the safe use of lawn mowers, electric saws, and pesticides once or twice a year to build up residents' related knowledge. 2. Holding workshops to promote heat stroke prevention, educating farmers about the safe time for farming, and always refer to temperature indicator.



3.2.5 Home Safety Program

Project	Began in	Description
Elderly safety promotion	2006	<ol style="list-style-type: none"> 1. Promotion of the physical training programs, which can help the elderly to prevent falls from occurring. 2. Advocacy of home life safety knowledge. 3. Advocacy of drug safety. 4. Promoting the rental of aiding tools
The inspection and improvement on home environment	2007、2009	<ol style="list-style-type: none"> 1. Performing a comprehensive assessment and improvement for the living environment of the elderly who live alone in Zhongzhuang and Guming. 2. Performing a comprehensive assessment and improvement for the living environment of the elderly over 65 in Zhongzhuang and Guming.
Help the foreign spouse to adapt the environment and have the ability to care for the family's safety	2008.08	Helping the foreign spouse to adapt the life in Taiwan, and provide counseling service for issues like emotional adjustment, family and marriage, and parenting through a caring point.

Home safety promotion committee proposes individual safety promotion plans that focus on elderly, family, and foreign spouse.

-Elderly safety: Introducing the physical training program for fall prevention, and home life safety improvement since 2006.

-Family safety: Comprehensive assessment and improvement for the living environment in 2007 and 2009.

-Foreign spouse: In 2008, a foreign spouse caring spot has been set up, and was cooperate with the Chiayi County foreign spouse center, Chiayi County Police Bureau, and Chiayi County Immigration Agency. Through life adjustment class and counseling service, the caring spot could help foreign spouses to understand law, prevent domestic violence and provide services like domestic violence referral and emergency care.



3.3 Programs that target high-risk groups and environments, and programs those promote safety for vulnerable groups.

3.3.1 Elderly Safety Promotion



About 17.8% of the populations in this area are elderly over age 65. Our goal for community safety promotion committee is to make sure the elderly can live a safe and comfortable life. We began to set up six caring spots in the township since 2005. These caring spots not only provide a place for the elderly to hold activities, they also arrange physical training programs for them. The physical training programs can help prevent falls from occurring. Other than that, the caring spots also help to illustrate the safety knowledge in home environment such as electricity, daily life, and fire evacuation.

In order to prevent injury from occurring in elderly's life at home, the committee will cooperate with Health Center of Hsin-Kang Township and perform a comprehensive assessment and improvement with their living environment. In 2007, the first assessment of 20 live-alone elderly had been performed. We found out that the objects were messier than usual; this could cause inconvenience when moving around and lead to the occurrence of fall. Therefore, we cleaned up the object that might get in their ways through the help of community volunteers. In 2009, we cooperate with Chiayi County Health Bureau and the Health Center of Hsin-Kang Township to perform the comprehensive assessment for elderly over 65. First, we hold up a volunteer training, and then complete the assessment for 185 household in two villages in July. We found out the following problems:

2009Chiayi County Hsin-Kang Township Elderly Home Environment Assessment Data Analysis				
I Overall Environment		Yes	No	%
1	If rugs present, there is anti-slip underlay.	20	165	10.81%
2	If rugs present, stabilized the edge of the rug.	2	183	1.08%
3	Non-reflective and anti-slip flooring material was used.	48	137	25.95%
4	Equipment for the elderly (such as wheelchairs, crutches, walkers, etc.) should be placed in a fixed position for their convenience.	61	124	32.97%
5	Using contrasting colors (not pattern, wave, or twill) to distinguish the change of height of stairs or entrance.	25	160	13.51%
6	Change the door knobs into T shape handles	33	152	17.84%

II Bathroom		Yes	No	%
1	Installation of anti-slip strips or anti-slip mats in the bathtub or shower room.	16	169	8.65%
2	Installation of handle by bathtub.	21	164	11.35%
3	Installation of handle by toilet.	42	143	22.70%
4	Installation of handle by sink.	26	159	14.05%
III Bedroom		Yes	No	%
1	Special protection on the furniture and wall (for example, safety mat or corner protector)	55	130	29.73%
VI Stairways		Yes	No	%
1	Eye-catching signs or contrasting marks in order to avoid tripping from occurring.	6	179	3.24%
2	Installation of fixed handrail or safety rope on both sides.	7	178	3.78%
3	Having appropriate lighting in the stairways (especially keep a nightlight on).	49	136	26.49%
4	The entrance of the room is not right beside the stairway.	28	157	15.14%

Currently, the home safety group will start with the promotion of anti-slip mats, and we will ask Chiayi County Fire Bureau to do trainings like basic life support, fire safety and natural gas safety at home for volunteers. This way, when volunteers visit the elderly, they would be able to improve the safety of their living environment. Also, through the advocacy of aiding tools, we hope the elderly can live in a safe environment. We will propose a comprehensive improvement for bathroom safety and lighting in the future.

3.3.2 Foreign Spouse Safety Promotion

Traffic accident is the number one cause of death in Chiayi County, and mostly, it was caused by head injury by scooter. When the foreign spouse first came to Taiwan, they not only face problems like social adaptation, cultural adjustment, family and marriage, and parenting issues, but also need to do some shopping or give the family members a ride on the scooter. Since the traffic signs are in different language, they really need someone to help them to understand the meanings of the signs. Therefore, the Hsin-Kang transportation safety promotion group designed a driving class for the foreign spouses. With the help of Motor Vehicle Office and translator, we successfully help 16 foreign spouses to get their motorcycle driver license.



3.3.3 Elementary Student Safety Promotion

Zhongzhuang and Guming both belong to the district of Guming elementary school. There are only 180 people including faculties. According to the statistics of Campus Security Report Center of Ministry of Education for all schools in 2006, about 55.6% of the injury was caused by traffic accident for students in Chiayi County. Therefore, the Hsin-Kang school safety group all agree that safety education should start early when preventing transportation injury.

Project Detail

1. Scheduling fire and earthquake drill, understanding traffic safety rules and traffic signs, safe use of play facility in the academic calendar.
2. Performing road test for the children who ride to school.
3. Holding up activities that are combined with the idea of safety, such as safety education speech competition, calligraphy competition, tug of war competition.
4. Observing the actual status of helmet wearing of students, and propose improvement.



3.4 Programs that document the frequency and causes of injuries

3.4-1 Injury surveillance group

Injury surveillance system is very important to establish safe community project. This will not only helps us to categorize the injuries, identify the prevention strategies and key point, but also provides a basis for the injury prevention program.

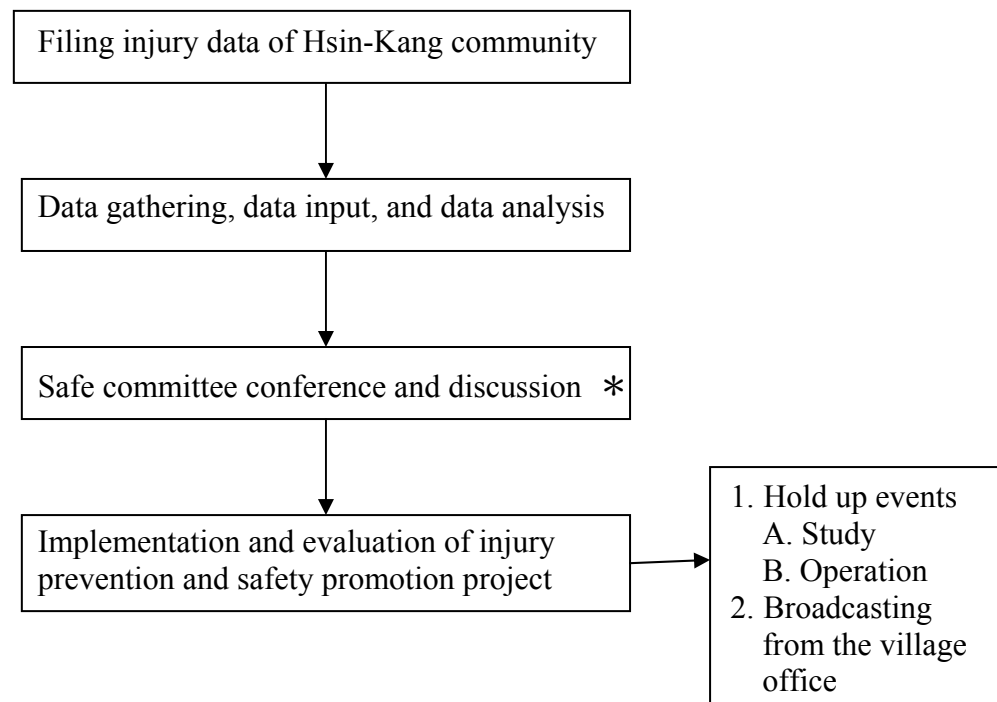
Sources of community injury data:

- The injury data provided by the health center of Guming elementary school once a month.
- Health Center of Hsin-Kang Township's medical records.
- Local medical clinics (Ye's Chinese medicine clinic, Lee Long-Ju Clinic, Chen Jin-huang clinic) medical records.
- The login record from the injury data logger: gather information through the general directors of both villages in the Activity Center.
- Hsin-Kang Police Station injury data.
- Hsin-Kang Fire Station emergency service data.
- Records from the residents who didn't go to the clinic but did tell the data logger about the injury.

The limitation of injury data:

- People who use folk medicine and did not report.
- The injured that went to the hospital in another area on their own.

Hsin-Kang Township Injury surveillance system:



* After the data has been analyzed, the safe committee will discuss and analyze it during the conference and propose improvement project.

The form that is used on filing injury data:

We use the form from Taiwanese Injury Prevention and Safety Promotion Association to record the data, injury types shown as the following:

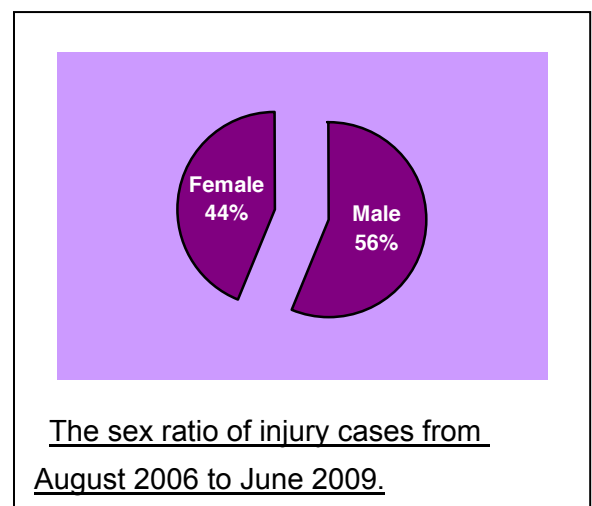
- submersion & drowning
- fall
- obstruction & suffocation
- poisoning
- road traffic injury
- injury caused by cutting, striking; or caught in between objects
- injury caused by human, animal, or plant
- burn

3.4-2 Hsin-Kang community Injury surveillance facts

Starting from August 2006 to June 2009, we have logged in 95 cases. The type of injury is listed in the following:

Time	<u>Aug-Dec 2006</u>			<u>2007</u>			<u>2008</u>			<u>Jan-Jun 2009</u>			<u>Total</u>
	0-14	15-64	65 and above	0-14	15-64	65 and above	0-14	15-64	65 and above	0-14	15-64	65 and above	
Type of injury													
Human, animal, or plant	0	0	0	0	3	0	0	0	0	0	1	0	4
Drowning	0	0	0	0	0	0	0	0	0	0	1	0	1
Transportation	12	0	0	8	0	0	9	0	0	0	0	0	29
Fall	0	0	0	13	0	0	19	0	3	0	1	0	36
Colliding, smashing, pressuring, folding, cutting, twisting and stabbing	0	0	0	0	0	0	13	0	0	9	3	0	25
<u>Total</u>	12			24			44			15			95

The sex ratio of injury cases is shown on the right.



The detail description of each injury type:

1. One drowning injury case: Villager who attempted to pick up an object but fell into water accidentally.
2. 29 transportation and traffic injuries: Mostly happened to students during the time of summer and winter vacation. The main location is the major road in the village. We infer the reasons are:
 - After the opening of the art senior high school (located in between Hsin-Kang town center and Guming Village), the usage of road increases.
 - Children attending school are from different districts, so the parents need to drive them to school every day.
 - The opening of Chia 74 Line resulted in more traffic between Sikou Township and Dalin Township.
3. 36 cases of fall injury: 32 children case, mainly occurred in the playground, hallway during the break time. Four adult cases, three of the cases happened to people over 65, and one person fell on the same section of the road twice.
4. Colliding injury: 14 cases in the school, four of the cases were students bumping into each other in the playground, two were in the hallway, four were students bumping into door, window, desk, or chair, and two were happened during tug of war. Two cases happened to male adult at home, which they didn't pay attention to the object they bumped into.
5. Nine cases of cutting injury: Seven cases happened to children during the art class when they were using the utility knife. The other two cases happened to female adult, which were paper cut at work and cut by bamboo basket.
6. One heat stroke death: Happened to a farmer who worked in a greenhouse alone. The heat stroke led to heat exhaustion, and the greenhouse has a temperature that is 5-7 degrees higher than the outside temperature. Since he was working alone, no one was able to help him in time.

3.5 Evaluation measures to assess their programs, processes and the effects of change.

When evaluating the effectiveness of the program in Hsin-Kang community, the committee established a comprehensive evaluation system. The evaluation system is divided into internal and external assessment. Hsin-Kang safe community consultants and Taiwanese injury prevention scholars and experts will evaluate the external assessment annually. HKCSPC sets up an evaluation team to do the internal assessment bimonthly. The result will be used as the basis of improving and injury prevention and safety promotion project.

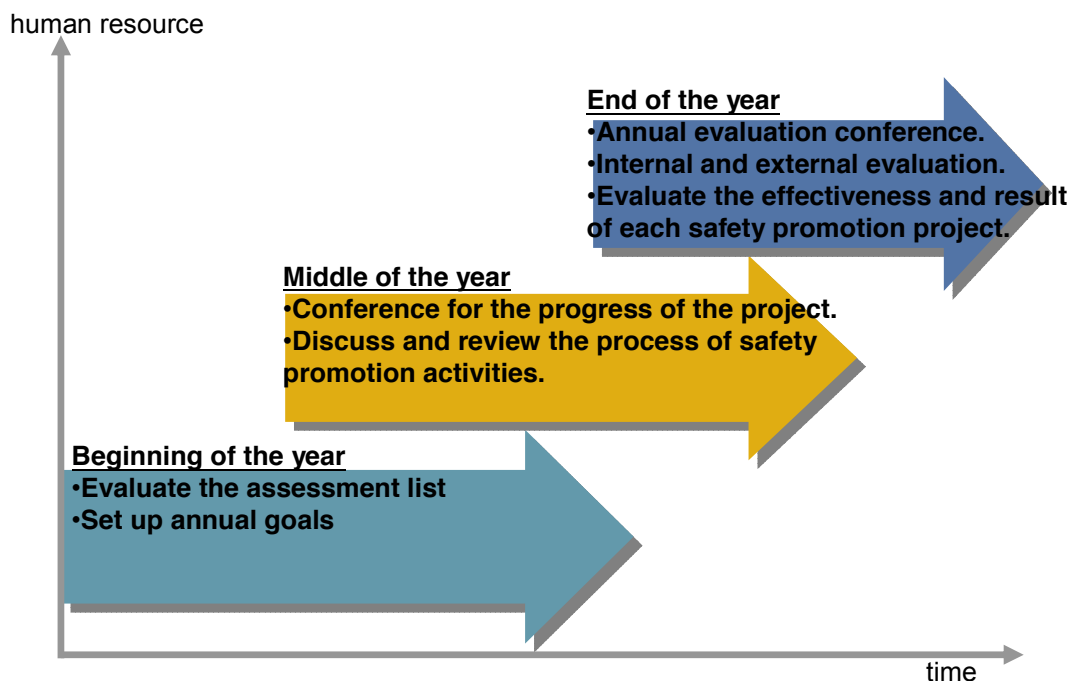
Goals

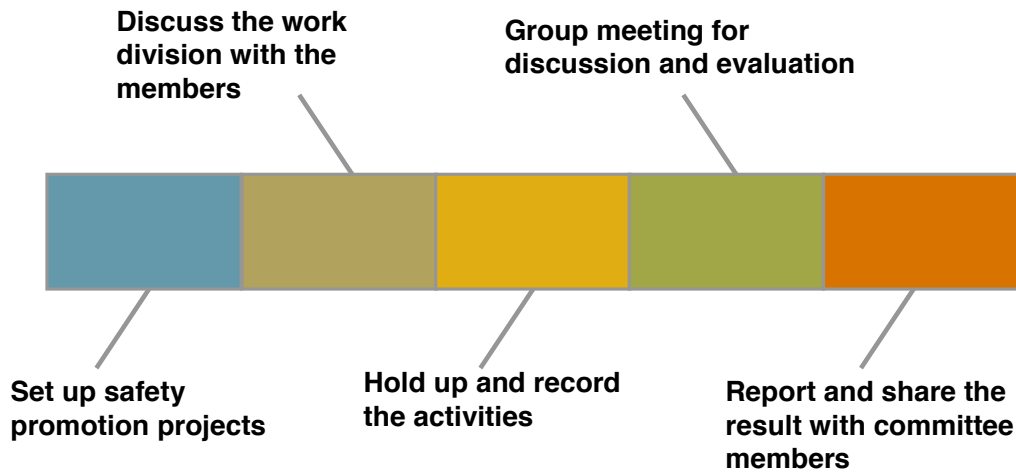
- Being able to perform all safety projects efficiently and thus find out the most effective way to perform all methods.
- The continuing of safe community promotion program.
- To encourage HKCSPC to establish a better community environment.

3.5.1 Internal Evaluation

The chairman of the HKCSPC, group leaders, executive group, and injury surveillance group perform the internal evaluation. It will focus on each group's progress and their safety promotion projects to do a regular assessment on its effectiveness.

* The process of evaluation





The result of self-evaluation of HKCSPC:

Organization:

- The structure of the HKCSPC is precise and clear.
- The organization is pushed by the cooperation of groups from different fields, which include the local residents, government agencies, community development associations, and Hsin-Kang Foundation of Culture and Education.
- Each working group is very clear with their job, and executes the project completely.
- Holding up regular conference and provide actual progress and results in the records.
- Based on the nature of the issue, improve the environment that was prone to injuries over time. Through the gathering of injury data, the improvement is not only limited to the environment but also to the concepts and even self-improvement.

- Using the local resources, such as:

Human resources: volunteer organization, local community development association etc.

Equipment: using activity center as the conference room.

Cooperate with local health center, town hall, and the local temples.

The entire program:

- Protecting all residents and the environment.
- A specific safety promotion program can effectively integrate all resources.
- A long-term, sustainable promotion program.

The result of the program:

- The injury surveillance group has data that can distinguish high-risk group, disadvantaged group, and high-risk environment.
- Having specific programs that can help improve the safety of high-risk group and disadvantaged group.
- There are ways to present the result of injury surveillance to the high-risk group and disadvantaged group. For example: present the result in the committee conference or during the safety promotion activities.

Injury surveillance system:

- Gathering injury data through various ways.
- Having a dedicated group who is responsible for aggregating the injury data.
- The injury surveillance data can provide detail information like gender, age, reason of injury, and time in a uniform format.
- The result of the surveillance is being used on the adjustment of injury prevention projects.

Evaluation system:

- Setting up an evaluation group to evaluate the effectiveness of the project.
- Self-evaluate regularly, and write a report for it.
- The result of evaluation can deliver to all of the committee members.
- After the evaluation, there is a record for the result improvement.

Learning and Sharing:

- Hsin-Kang community continues to participate in the safe community learning activities worldwide.
- Hsin-Kang community continues to participate in the safe community sharing experience worldwide.

3.5.2 External evaluation

The external evaluation will be performing annually based on the six indicators of international safe community. The result will be made into a report by the evaluation agencies for Hsin-Kang community's reference and improvement.

- Taiwanese Community Safety Promotion Center, Southern Region Support Center
- Bureau of Health Promotion, Department of Health, Executive Yuan
- Chiayi County Health Bureau

The report from Southern Region Support Center stated:

The various safety projects can truly meet the needs of the community residents and achieve the desire effect in Hsin-Kang community. Using the safety promotion for the elderly as an example, the residents put in efforts and time to routinely visit the elderly on their own, also establish a notification system combining with safety promotion programs like physical training program and home visiting. Through the experience, the residents can fully understand the spirit of safe community.

On the other hand, the improvement of road signs, lines, and transportation knowledge of the residents enhance the concept of law-abiding of everyone in Hsin-Kang community.

3.6 Ongoing participation in national and international Safe Communities networks.

The job of safety promotion needs multiple supports, close monitoring, and thorough evaluation in order to proceed smoothly. Sharing experiences with domestic and international communities is extremely important. Since the beginning of the program, Hsin-Kang community continuously attends the conferences and seminars domestically and internationally with field visits to other communities.

Goals

- Sharing experiences with the domestic and internal communities and learn their strength while improving our weakness.
- Share the developing experience of Hsin-Kang community.
- Letting Hsin-Kang community grow with other communities.

3.6.1 Domestic participation

- March 31, 2006 Participated the opening of Taiwanese Community Safety Promotion Center, Southern Region Support Center.
- April 1, 2006 Participated Taiwan community safety program seed camp (part 1)
- May 13, 2006 Participated Taiwan community safety program seed camp (part 2)
- June 14, 2006 Participated Taiwan community safety program seed camp (part 3)
- July 18, 2006 Visited by Mr. Yousif Rahim.
- Sep. 2-3, 2006 Participated 2006 Taiwan safe community development seminar.
- Oct.20, 2006 Visited by Vietnam Commission for Population, Family and Children.
- Nov. 25-26, 2006 Visited Alishan safe community.
- March 31, 2007 Participated a safety prevention conference at Taiwanese Community Safety Promotion Center, Central Region Support Center.
- April15-16, 2007 Participated a conference with Taiwanese Community Safety Promotion Center – visiting Shou-Feng community.
- May 30, 2007 Participated TSHPA seminar – 2007 International safe school seminar.
- July 10, 2008 Visited by doctors from National Taiwan University Hospital Yun-lin Branch, sharing experience of Hsin-Kang safe community program
- July 26, 2008 Participated the safe community conference at Taiwanese Community Safety Promotion Center, Southern Region Support Center (part 1)
- Sep. 20, 2008 Participated the safe community conference at Taiwanese Community Safety Promotion Center, Southern Region Support Center (part 2).
- October 22, 2008 Visited Chiayi County safe committee.
- Nov. 21, 2008 Visited by Dr. Nam Soo Park, the representative of the Certifying Center for International Safe Community.

3.6.2 International participation

- November 21-24, 2007 Participated the 4th Asian Region Safe Community Conference, and presented with poster.

3.6.3 The use of news media

- Through the broadcasting system of Zhongzhuang Village and Guming Village to help the promotion of various safety issues.
- Promoting through the publication of Hsin-Kang Foundation of Culture and Education.
- Promoting through the blog of Chiayi County Fuyuan Services Association.
- Through the coverage of newspapers and news media.
- Through the coverage of television program
- Through the electrical coverage of Chiayi County Government webpage.

IV. Our Commitment

Hsin-Kang community is willing to join the international safe community network and continue to work for the promotion of community safety. Hsin-Kang community is a community where autonomic, spontaneous residents unite together with the help of industry and government and looking to create a perfect community for life. Our promotion committee members come from different profession backgrounds, so they all have their strength to work as a team and solve the problem when facing the challenges. Hsin-Kang community is willing to help the communities worldwide to promote safe community program.



Hsin-Kang – The Hometown of Smile

Using the wisdom and the love of farmers to reduce injury from happening

Changing the thinking of fluke by everyone's effort

May safety nourish every inch of Hsin-Kang land

Expecting to see the smiling sun instead of weeping faces in every glance

May the Hometown of Smile become the reality rather than a slogan.