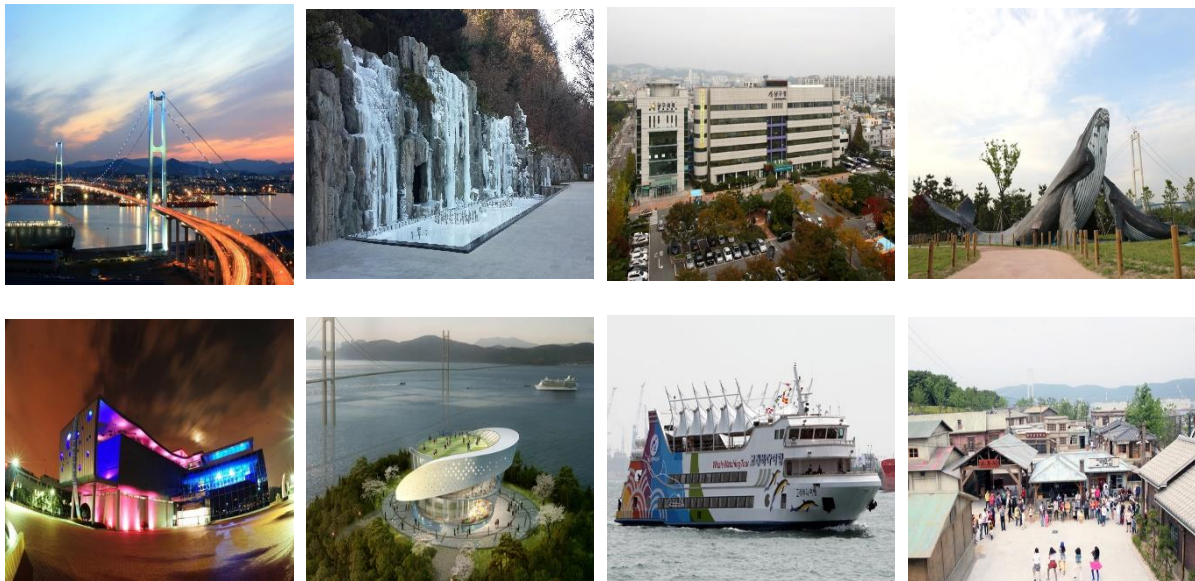




Nam-gu, Ulsan Metropolitan City



City name: Nam-gu, Ulsan Metropolitan City

Country name: Republic of Korea

Population of Nam-gu: Ulsan Metropolitan City 334,304 persons (as of February 2018)

Beginning of Safe Community Program: 2014

The year of designation as the member of the International Safe Community Network: 2018

The name of the International Safe Community Support Center
: Center for Community Safety Promotion, Ajou University Medical Center
(Director: Joonpil Cho, jpcho6007@gmail.com)

Certifier: Dale Hanson

Co-Certifier: Yoko Shiraishi

Program website address: www.ulsannamgu.go.kr

Additional information:

Staff in Charge: Kim Jong-keun

Department in charge: Safety Management Division

Address: 233, Dotjil-ro, Nam-gu, Ulsan Metropolitan City

Postal code: 44701

Local government name: Nam-gu, Ulsan Metropolitan City

Country name: Republic of Korea

Phone number (including country code): +82-52-226-5282

Fax number: +82-52-226-5268

Email address: bellkk6090@korea.kr

Website address of Nam-gu, Ulsan Metropolitan City: www.ulsannamgu.go.kr

We are engaged in the following safety promotion activities through this program.



The public health approach for damage prevention and Haddon's Matrix play the role of the medium and framework for understanding the mechanism and risk of damage as well as preparing various countermeasures in case damages occur. Haddon's Matrix is a brainstorming tool which is a combination of the epidemiologic triangle (host), agent, environment, and preventive level. Through this combination, it is possible to seek for damage prevention methods and strategies by phase of accidents. The intervention which combines Haddon's Matrix analysis sheet by establishing various strategies (education, environment, engineering improvement and regulation, etc.) is the most effective in damage prevention.

Suicide Prevention Project

Age Strategy	Children (7 - 13 years)	Adolescents (14 - 19 years)	Adults (20 - 64 years)	Senior citizens (65 years or more)
Education	<ul style="list-style-type: none"> • Children's Mental health promotion program 	<ul style="list-style-type: none"> • Violence and bullying prevention education • Academic stress management • Anger-control education • Suicide prevention education program • Gate keeper program for teachers 	<ul style="list-style-type: none"> • Employment (unemployment) stress management • Job stress management • Mental health promotion education • Depression management education 	<ul style="list-style-type: none"> • Gate keeper program • Geriatric depression management education • Mental health promotion education
Environment improvement	<ul style="list-style-type: none"> • Environment improvement of locations where suicide occur frequently 			

System	<ul style="list-style-type: none"> • Training gate keepers in each <i>dong</i> • Establishing suicide prevention network (mental health promotion center, the police, fire department, emergency medical center) • Supporting the self-help meetings of vulnerable social groups such as the bereaved families of suicides • Supporting the activities of the Suicide Prevention Center
---------------	---

Fall Prevention and Life Safety Project

Strategy \ Age	Infants (0 - 6 years)	Children (7 - 13 years)	Adolescents (14 - 19 years)	Adults (20 - 64 years)	Senior citizens (65 years or more)
Education	<ul style="list-style-type: none"> • Parent education for infants' safety 	<ul style="list-style-type: none"> • Parent education for children's safety 		<ul style="list-style-type: none"> • Distribution of fall prevention guide in the home • Suicide prevention education 	<ul style="list-style-type: none"> • Dissemination of fall prevention exercise (tai chi, balance training, etc.) • Fall exercise leaflet distribution
Environment improvement	<ul style="list-style-type: none"> • Safety management program for children's playground 				<ul style="list-style-type: none"> • Safety environment improvement project for senior citizen centers • Distribution of non-slip socks for senior citizens who live alone • Home safety management for

				vulnerable social groups (senior citizens who live alone)
Regulation reinforcement	<ul style="list-style-type: none"> • Reinforcement of safety inspection and regulation on kindergartens and playgrounds 			<ul style="list-style-type: none"> • Regulation reinforcement of safety facilities in senior citizen centers
	<ul style="list-style-type: none"> • Maintenance of signs and promotional materials 			

Traffic Safety Project

<div style="text-align: right;">Age</div> <div style="text-align: left;">Strategy</div>	Infants (0 - 6 years)	Children (7 - 13 years)	Adolescents (14 - 19 years)	Adults (20 - 64 years)	Senior citizens (65 years or more)
Education	<ul style="list-style-type: none"> • Traffic safety education for parents/ distribution of guidebook • Pedestrian safety education • Distribution of reflective sign system • School bus safety education • Safe 	<ul style="list-style-type: none"> • Pedestrian safety education • Distribution of reflective sign system • Training safety keepers who assist children on the way home from school • Wearing safety helmet when riding the bicycle / inline skates 	<ul style="list-style-type: none"> • Education for wearing motorcycle safety helmet • Safe driving education for the youth 	<ul style="list-style-type: none"> • Creating a safe driving culture • Safety education for commercial drivers (taxi, container truck) 	<ul style="list-style-type: none"> • Traffic safety education for senior pedestrians • Safe driving education for senior drivers • Distribution of reflective sign system

	driving education for school bus drivers				
Environment improvement		<ul style="list-style-type: none"> • Creating a safe school zone 			<ul style="list-style-type: none"> • Creating a safe silver zone
	<ul style="list-style-type: none"> • Creating a safe road and pedestrian environment • Creating a safe traffic road 				
Regulation reinforcement	<ul style="list-style-type: none"> • Obligation to use safety seat for children 	<ul style="list-style-type: none"> • Regulation reinforcement in school zones • Training mothers and senior citizens as safety instructors 	<ul style="list-style-type: none"> • Reinforcement for wearing motorcycle safety helmet 	<ul style="list-style-type: none"> • Clampdown on drinking and driving • Clampdown on driving speed • Regulation reinforcement of wearing safety belt 	<ul style="list-style-type: none"> • Reinforcement of aptitude test for senior drivers who are 65 or more who are 65 or more
	<ul style="list-style-type: none"> • Regulation of changes to vehicle structures (tinted windows, etc.) • Reinforcement of speed regulation at the bus stations / intersections 				

Culture, Tourism, Leisure Safety Project

Strategy \ Age	Children (7 - 13 years)	Adolescents (14 - 19 years)	Adults (20 - 64 years)	Senior citizens (65 years or more)
Education	<ul style="list-style-type: none"> • Education on safe swimming • Creating a safe culture for cultural events, tourism, and leisure activities • CPR and first aid education program 			
Environment improvement	<ul style="list-style-type: none"> • Discovering and improving locations where sports and water sports safety accidents occur frequently • International standardization of safety sign panels 			
Regulation Reinforcement	<ul style="list-style-type: none"> • Safety environment inspection and regulation reinforcement of tourist sites and festivals, and stadiums • Safety inspection of tourist attraction facilities (tourist sites, accommodations, entertainment facilities, etc.) 			

School Safety Project

Strategy \ Age	Kindergarten students	Elementary students	Middle and high school students
Education	<ul style="list-style-type: none"> Life safety education 	<ul style="list-style-type: none"> Safety events for children (Safety day event, writing safety diary, etc.) 	
		<ul style="list-style-type: none"> Prevention education for safety accidents in schools School violence prevention program Emergency response education for students / teachers 	
Environment improvement	<ul style="list-style-type: none"> Creating a safe kindergarten environment 	<ul style="list-style-type: none"> Creating a safe school environment (improving the dangerous areas inside the school) Creating a safe school zone environment 	
Regulation reinforcement	<ul style="list-style-type: none"> Regulation reinforcement of kindergarten safety environment 	<ul style="list-style-type: none"> Regulation reinforcement of school zone safety environment Training school safety keepers 	

Disaster Safety Project

Strategy	Elementary students / Adolescents	Adults	Senior citizens
Education	<ul style="list-style-type: none"> Disaster safety itinerant education Fire fight safety experience education 	<ul style="list-style-type: none"> CPR / first aid education 	<ul style="list-style-type: none"> Heat wave management education
	<ul style="list-style-type: none"> Safety inspection and maintenance for vulnerable social groups (child breadwinners, senior citizens who live alone, the disabled) Fire prevention safety inspection for households / daycare centers / senior citizen centers Production and distribution of booklet on how to behave in case of a disaster 		

	<ul style="list-style-type: none"> • Fire drill program (searching for the emergency exit and evacuation shelter, practicing how to use the fire extinguisher)
Environment improvement	<ul style="list-style-type: none"> • Safety inspection of households of vulnerable social groups (senior citizens who live alone, child breadwinners) • Fire prevention safety inspection for households / daycare centers / senior citizen centers
Regulation reinforcement	<ul style="list-style-type: none"> • Reinforcement of safety control standard of urban facilities
System	<ul style="list-style-type: none"> • Establishing an integrated safety network (establishing an electric disaster map system) • Establishing the foundation of fire protection safety and the response system (supporting and establishing disaster relief information, project for establishing integrated DB of firefighting - prevention) • Creating the foundation for resident autonomous community safety culture (Supporting and reinforcing resident volunteer work, establishing a resident cooperative system, and promoting a resident safety culture)

Violence and Crime Prevention Project

Strategy \ Age	Infants (0 - 6 years)	Children (7 - 13 years)	Adolescents (14 - 19 years)	Adults (20 - 64 years)	Senior citizens (65 years or more)
Education	<ul style="list-style-type: none"> • Education on how to deal with kidnapping / abduction • Sexual violence and harassment prevention education 	<ul style="list-style-type: none"> • Education on how to deal with crime such as kidnapping • Sexual violence prevention education • Child abuse prevention education • School violence 	<ul style="list-style-type: none"> • School violence prevention program • Distribution of whistle for self defense • Sexual violence and harassment prevention education • Juvenile 	<ul style="list-style-type: none"> • Crime / violence prevention education • Prevention education on sexual violence and harassment at work 	<ul style="list-style-type: none"> • Domestic violence prevention education

		prevention program • Distribution of whistle for self defense	delinquency and violence prevention education		
Environment improvement		• Creating a pilot street for safe return home of women and children			
		<ul style="list-style-type: none"> • Installing security CCTV and black box to create a safe city • Preventing crime in convenience stores by establishing Foot SOS • Cityscape development project of Crime Prevention through Environmental Design (CPTED) • Program for creating a safe community • Program for preventing crime in residential areas 			
System settlement		<ul style="list-style-type: none"> • Expanding the support for adolescents from vulnerable social groups (child breadwinner) • Operating a support system for the victims of child abuse • Activities of child safety keepers 			
		<ul style="list-style-type: none"> • Operating an integrated control center by establishing resident safety net • Operating Hongik patrol card • Safe return home service using taxis • Housebreaking prevention activities such as studio apartments 			

Industrial Safety Project

Subjects Strategy	Local residents	Local government / related organizations	Chemical companies
<p style="text-align: center;">Education / Publicity</p>	<ul style="list-style-type: none"> • For district office / chemical companies: Collect and convey the opinion of residents on chemical safety through community centers and private organizations such as Citizen's Coalition for Safety, Safety Culture Movement Promotion Council, etc. 	<ul style="list-style-type: none"> • For local residents: Education on the status of chemical safety of Nam-gu and emergency guidelines • For chemical companies: Chemical substance control and local community support system in case of emergency 	<ul style="list-style-type: none"> • For local residents: Publicizing company activities for chemical safety and educating how to respond in case of emergency
	<p style="text-align: center;">Environment improvement</p>	<ul style="list-style-type: none"> • Environment monitoring and reporting for chemical safety such as release of harmful gas and bad smell (Safety Reporting System of the Ministry of Public Safety and Security) <p>⇒ Emergency report to 119</p>	<ul style="list-style-type: none"> • Improving the infrastructure of decrepit facilities of the chemical industrial complex • Periodic measurement and improvement of chemical environment • Administrative measures such as improvement based on the result of safety inspection of

		chemical companies	
System settlement	<ul style="list-style-type: none"> Monitoring and spreading of the duty to notify the community of risk management plan of the company which manages substances against accidents (Chemicals Control Act, Article 42) (Community Center) Volunteer work for supporting the safety campaign of chemical companies 	<ul style="list-style-type: none"> Reinforcement of the legal authority / function of chemical safety measures of Nam-gu and reenactment of ordinance ⇒ Exerting the authority and duty according to Chemicals Control Act (2015) Establishing the control tower system centering the district office for the prevention and response to chemical accidents 	<ul style="list-style-type: none"> Performing the duty to notify the community of the risk management plan Specifying in internal company regulations safety measures for the residents in case of emergency, and preparing to implement them
	<ul style="list-style-type: none"> Residents - Creating a chemical safety network communicating between local community / related organizations and the company Systematically monitoring the duty to notify the community of risk management plan of the company which manages substances against accidents (Chemicals Control Act, Article 42) 		
Prevention activities / campaign	<ul style="list-style-type: none"> Conducting chemical safety campaign centering private organizations such as Citizen's Coalition for Safety, Safety Culture Movement Promotion 	<ul style="list-style-type: none"> Safety prevention campaign through the establishment of a cooperative system with private volunteer groups in Nam-gu Functional chemical safety prevention activities by each related organizations 	<ul style="list-style-type: none"> Starting the Responsible Care Movement centering major companies

	Council, etc.		
	<ul style="list-style-type: none">• Establishing the reporting culture of residents for chemical safety (revitalization of Safety Reporting System of the Ministry of Public Safety and Security)• Supporting the zero hazard campaign of the businesses• Industrial Safety and Health Week Event		

Program for High Risk Groups

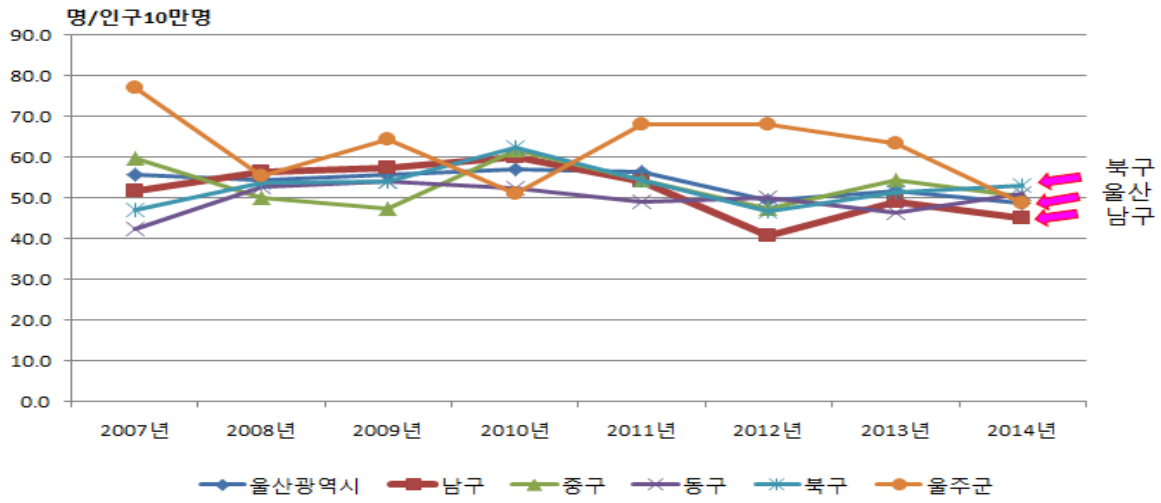
Project name	Implementation performance	Department in charge
Industrial Safety Project	1) Producing and distributing industrial safety and health mark for businesses with foreign workers	Nam-gu Office Ministry of Employment and Labor
	2) Business safety inspection in vulnerable periods	Ulsan Branch of Industrial Complex Corporation
Suicide Prevention Project	3) Mental health counseling and management of high risk group of suicide	Nam-gu Health Center
	4) Happy later years without stress and depression, keeping a healthy mind	Nam-gu Health Center
	5) Education for protecting life "Seeing, Listening, and Speaking"	Nam-gu Health Center
Fall prevention and life safety project	6) Operating keep-fit class in senior citizen center	Nam-gu Office
	7) Care service for senior citizens (basic)	Nam-gu Office
	8) Care service for senior citizens (comprehensive)	Nam-gu Office
	9) Free distribution of gas safety device for vulnerable social groups	Nam-gu Office
	10) Installation and management of emergency safety system for the households of senior citizens who live alone	Nam-gu Office
	11) Safety inspection of senior citizen center facility	Nam-gu Office
	12) Safety inspection of electrical installation in senior citizen center	Nam-gu Office Electrical Safety Corporation
Fall prevention	14) Safety inspection of Seniors Welfare Center facility	Nam-gu Office

and life safety project	15) Safety inspection of children's playground	Nam-gu Office Safety Monitoring Volunteers
	16) Intensive management program for the fall prevention of frail senior citizens	Nam-gu Health Center
	17) Life safety education for vulnerable social group	Nam-gu Office Ulsan Citizen's Coalition for Safety
Traffic Safety Project	18) Improvement project of Children Protection Zone	Nam-gu Office Traffic Volunteer Group
	19) Operating CCTV in Children Protection Zone (Nam-gu Office)	Nam-gu Office
	20) Traffic safety instruction in school zone	Office of Education Nambu Police Station Traffic Volunteer Group
	21) Traffic safety education at Children's Transportation Safety Park of Ulsan Grand Park	Ulsan Citizen's Coalition for Safety
	22) Children's Traffic Safety Quiz Competition	Transportation Safety Authority
Culture, Tourism, and Leisure Safety Project	23) Safety inspection of water leisure facility	Nam-gu Office City Management Corporation Coast Guard
	24) Safety education of water leisure experience class	City Management Corporation
	25) Protection activity for water shortage safety of Taehwagang River	Nambu Fire Station Volunteer Fire Department

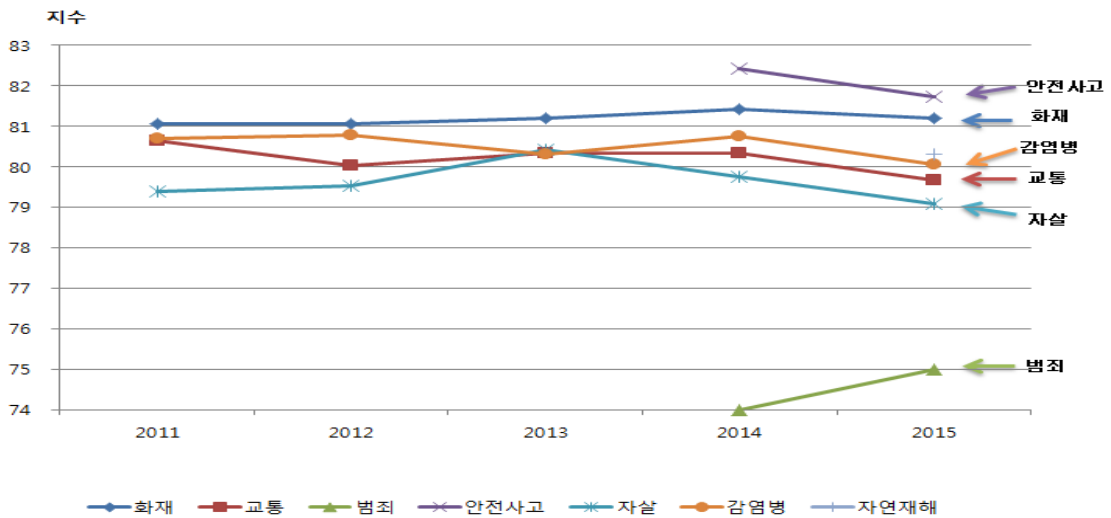
School Safety Project	26) Safety inspection and risk factor patrol around the school	Nam-gu Office Private organization
	27) Operating food safety protection area for children	Nam-gu Office
	28) Operating suicide prevention and mental health promotion program	Office of Education
	29) Operatig school violence prevention program	Office of Education
	30) Sexual violence prevention education in schools	Nam-gu Office Domestic (Sexual) Violence Counseling Center
Disaster Safety Project	31) Radioactivity prevention education for local residents	Nam-gu Office
	32) Securing the passage for firefighters	Nambu Fire Station
	33) Project for constructing safe residence for vulnerable social groups	Nambu Fire Station
	34) Safety inspection for households vulnerable to disasters	Nam-gu Office Electrical Safety Corporation
Vulnerable Prevention Project	35) Installing and operating security CCTV	Nam-gu Office
	36) Establishing Seonam Lake Park Safety and Relief Reporting Network	Nam-gu Office Nambu Police Station Nambu Fire Station
	37) Operating Safe Town for Women	Nam-gu Office Nambu Police Station
	38) Protection activity for the disadvantaged	Nambu Police Station
	39) Promoting preventive patrol and safety culture movement by private organizations	Marine Corps
	40) Education and counseling for adolescents who are ordered to attend lecture by the court	Youth Counseling Welfare Center

	41) Operating Support Center for Out of School Children	Nam-gu Office Youth Counseling Welfare Center
	42) Child abuse and sexual violence prevention education for nursery facility staff	Childcare Support Center

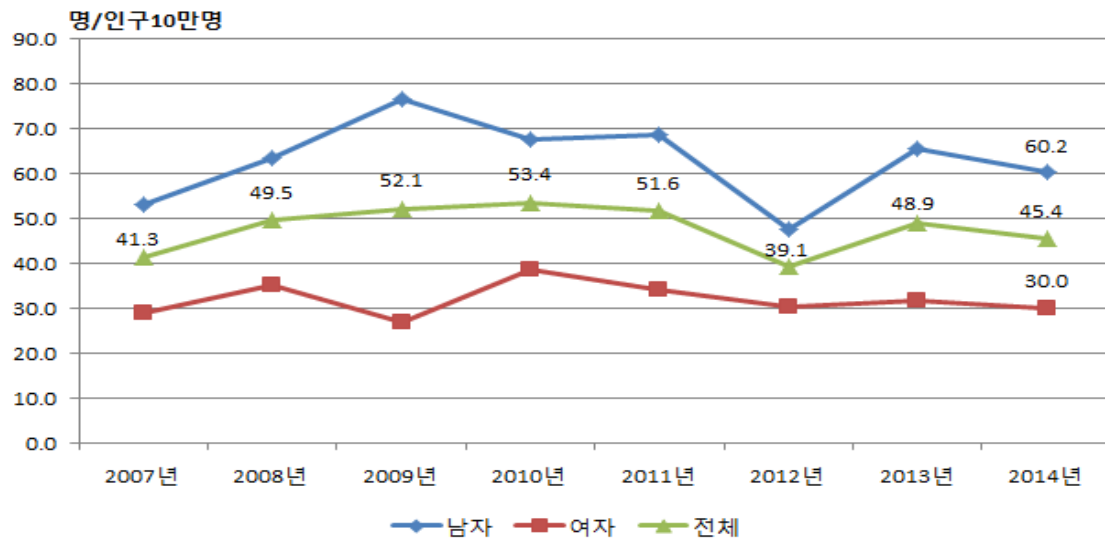
□ Comparison of the development of age-standardized death rate by damage in Ulsan Metropolitan City (2007 - 2014)



□ The development of age-standardized death rate by damage based on the cause (2011 - 2015)



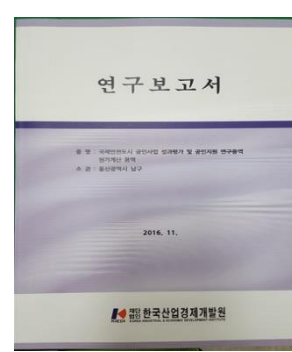
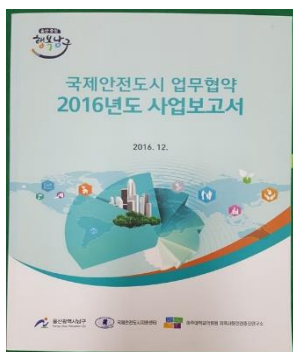
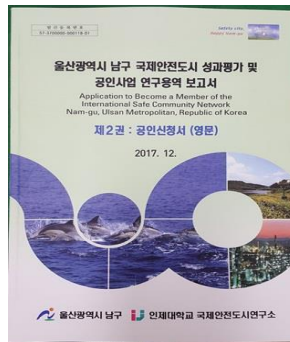
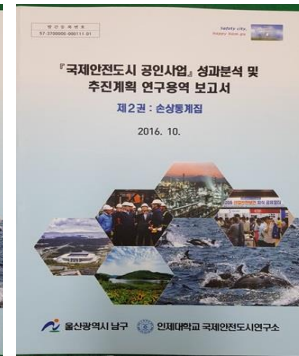
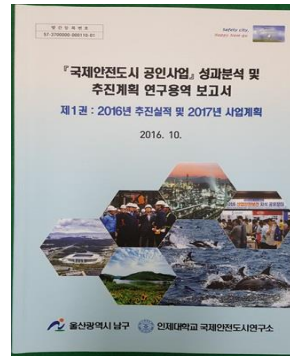
□ The development of death rate by damage based on gender (2007 - 2014)



□ **Publication**

- The Research and Service Report on the Data Survey of International Safe Community Certification Project of Nam-gu, Ulsan Metropolitan City
- The Final Research and Service Report on the Performance Analysis and Promotion Plan for the International Safe Community Certification Project
- The Research and Service Report on the Performance Analysis and Promotion Plan for the International Safe Community Certification Project
Volume 1 2016 Implementation Performance and 2017 Project Plan
- The Research and Service Report on the Performance Analysis and Promotion Plan for the International Safe Community Certification Project
Volume 2 Collection of Damage Statistics
- The Research and Service Report on the Performance Evaluation and International Safe Community Certification Project of Nam-gu, Ulsan Metropolitan City Volume 1 Application for Certification (Korean)
- The Research and Service Report on the Performance Evaluation and International Safe Community Certification Project of Nam-gu, Ulsan Metropolitan City Volume 1 Application for Certification (English)

Research report



□ Manpower

- Leader: Seo Dong-wook
- Number of people: 6 persons
- Department in charge: Safety Management Division
- Full-time personnel: 6 persons
- Full-tie job: 6 persons
- Temporary job: None

□ Institute

- Integrated leadership group between sectors for safety improvement
 - Nam-gu Safe Community Committee
 - Nam-gu Safe Community Working Committee
 - Nam-gu Industrial Safety Subcommittee
 - Nam-gu Suicide Prevention Subcommittee
 - Nam-gu Traffic Safety Subcommittee
 - Na,-gu Culture, Tourism, and Leisure Safety Subcommittee
 - Nam-gu Traffic Safety Subcommittee
 - Nam-gu Disaster Safety Subcommittee
 - Nam-gu Violence and Crime Prevention Subcommittee
 - Nam-gu Fall Prevention and Life Safety Subcommittee

- Public health / health promotion: Nam-gu Health Center, Ulsan Metropolitan City

□ International commitments

- Visited the following cities for a tour of inspection
 - Visited the cities to prepare for the certification of International Safe Community: Gangbuk-gu, Seoul, Changwon-si, Gyeongsangnam-do, Gwangju Metropolitan City (July 2014)
 - Visited another city for the local inspection for the certification of International Safe Community: Gumi-si (March 2017)
 - Visited another city for the final inspection for the certification of International Safe Community: Jeju-do (July, 2017)
 - Visited another city for the final inspection for the certification of International Safe Community: Sejong-si (July, 2017)

- Participated in Safe Community conferences
 - Discussion Meeting of International Safe Communities Network held in Suwon (January 2016)
 - Discussion Meeting of International Safe School held in Suwon (March 2016)
 - The 2nd Discussion Meeting of Korean Network of International Safe Communities held in Gwangju (April 2016)
 - Discussion Meeting of International Safe Communities Network held in Suncheon (April 2016)

- Best Practice Presentation of Korean Network of International Safe Community held in Suwon (September 2017)
- International Safe Communities Conference held in Nan, Thailand (November 2015)
- International Safe Communities Seminar held in Koriyama, Japan (November 2016)
- Korea-Japan International Safe Schools Symposium (November 2016)
- International Safe Cities Korean Network Conference held in Suncheon (December 2016)
- The 1st Discussion Meeting of International Safe Communities (February 2017)

Hosting Safe Communities Conference: None

Hosting Traveling Seminar: None

Others

- Proclamation ceremony for the certification of International Safe Community and Symposium held in Gwangju (April 2016)
- Proclamation ceremony for the certification of International Safe Community held in Asan-si (January 2018)
- Proclamation ceremony for the certification of International Safe Community held in Sejong-si (January 2018)