

**Application to Become a Member of the International Safe Community
Network**

Bansongyuanlu Sub-district, Huangpu District, Shanghai City

May 25th, 2012

Column 1	Column 2
<p>Section A Brief Introduction</p> <p>A.1 Overview and History</p> <p>Bansongyuanlu Sub-district was established in April 1960, located in the southeast corner of Huangpu District, with its east and south surrounding Huangpu River. Now it governs an area of 2.87 square kilometers, having 22 neighborhood committees. The Urban Best Practices Area of Shanghai World Expo in 2010 is in this community, which covers an area of 0.87 square kilometers.</p> <p>Transportation is convenient within the community, having No. 4, 8, and 9 subways, and there are Tourist Distribution Center of Huangpu District and Public Transport Hub under Nanpu Bridge. Residential areas within the community cluster together. There are a wide range of community resources, with 14 primary and secondary schools, including Datong High School and Shanghai No. 8 Middle School, two well-known school with two hundred years of history; with 708 Research Institute and 702 Research Institute, two national key scientific research institutions; with a tertiary hospital of Shanghai No. 9 People’ s Hospital and 7 garrison armies such as Shanghai general fire brigade of armed police, Huangpu detachment and Station Lochus, etc.; with 429 enterprises, including 45 manufacturing enterprises, and others are mainly micro-business, catering and other service enterprises.</p>	<p>Are the descriptions sufficient? <input checked="" type="checkbox"/> YES <input type="checkbox"/> no If no what is missing</p> <p>Very well described.</p>
<p>A.2 The strategy, ambitions, objectives and work in the community in regard to safety.</p> <p>A.2.1 Ambition</p> <p>Surrounding the community construction vision of “Century Bansongyuan, Harmonious Community”, to nurture the culture of public safety, strengthen the concept of public safety, and strive to become a member of International Safe Community Network as soon as possible.</p> <p>A.2.2 Objectives</p> <p>In accordance with the requirements of “12th Five-Year Plan for Community Construction and Management” of Bansongyuanlu Sub-district, by 2015 to ensure no major production safety accidents in the district, and maintain a zero-death control objective; that safe kindergarten and safe school construction to achieve full coverage to control and avoid various types of injury especially the occurrence of fatalities; to adhere to the zero death of the regional traffic injuries as the control objective, and to effectively control and reduce the number of hospitalizations due to injuries from traffic accidents; the injury rate of community residents is declining; the satisfaction of the community residents on community safety reaches more than 80%.</p>	<p>Are the descriptions sufficient? <input checked="" type="checkbox"/> YES <input type="checkbox"/> no If no what is missing</p> <p>Appropriate goal and objectives, however, maintaining a no-death control objective while honourable, there could be factors outside of the community that prevents this.</p>

<p>A.3 The mayor (or similar function of the community) and the executive committee involved.</p> <p>Bansongyuanlu Sub-district Office is the representative agency of Huangpu District Government. The sub-district office sets up a leading group of safe community construction, with Xu Jing, director of sub-district office served as the group leader and members made up of representatives of government departments of the jurisdiction, community units, educational institutions, medical institutions and social organizations, and others. Among them, the government departments include District Administration of Work Safety, District Public Security Bureau, District Civil Affairs Bureau, District Education Bureau, District Health Board, District Bureau of Cultural Affairs, District Sports Bureau, District Greening Bureau, District Fire Brigade, Seven Lochus and Eight Lochus of District Traffic Police Detachment, etc. The construction work of Bansongyuanlu Sub-district formed the construction pattern of “Government-led, Sector-led, full members to participate in”.</p>	<p>Are the descriptions sufficient? Is the Mayor involved? <input checked="" type="checkbox"/> YES <input type="checkbox"/> no</p> <p>Is the executive committee involved? <input checked="" type="checkbox"/> YES <input type="checkbox"/> no</p> <p>Who is chairing the cross-sectional group? Mr Xu Jing, Director of Bansongyuanlu Community, Huangpu District, Shanghai.</p> <p>Very good government representation.</p>
<p>A.4 The injury risk-panorama in the community.</p> <p>Bansongyuanlu Community is located at the city center, with small area, dense high-rise buildings and residential population, more elderly persons and foreign population, and more complex traffic conditions.</p> <p>The existing risk and injury are mainly:</p> <ol style="list-style-type: none"> 1. Injury from suicide of high-rise falling. In 2011, there are 5 cases, resulting in 4 dead and 1 seriously injured; 2. Injury from traffic accidents. There are 6 trunk roads and 29 other roads within the region. In 2011, there are 3138 traffic accidents, resulting in 1 dead and 264 injured; 3. Injury of elderly persons. The aging trend of district population is obvious. In 2011, there are 21 elderly persons' injury accidents. <p>Potential hazards and risks are mainly:</p> <ol style="list-style-type: none"> 1. There are 133 high-rise residential buildings. There exist deficiencies in learning and mastering the knowledge of fire escape of the residents in the buildings, having some potential hazards and risks; 	<p>Is the risk-panorama sufficiently described? <input checked="" type="checkbox"/> YES <input type="checkbox"/> no If no what is missing</p> <p>Excellent description. Very well done.</p>

2. Shops are concentrated along East Xietu Road of the community. There are more personnel and vehicles engaged in commercial activities, and here is the traffic hub, with some potential hazards on traffic safety.

B. Structure of the Community

B.1 The demographic structure of the community.

According to the data of the sixth population census of Huangpu district, Shanghai in 2010, the resident population of the community is 89,776, including 43,573 males and 46,203 females, with the male-female ratio of 100: 106. Among the resident population, there are 72,298 household population, accounting for 80.5%; 17,478 foreign population, accounting for 19.5%.

Age composition of the resident population

There are 7,186 people aged 0-14, accounting for 8.00%; 4,111 people aged 15-19, accounting for 4.58%; 60,643 people aged 20-59, accounting for 67.55%; 17,836 people 60 and over, accounting for 19.87%.

Educational level of the resident population

To carry out the statistics according to the resident population aged 6 and over in the region

Category	No schooling	Primary school	Junior high school	Senior high school	Junior college	Undergraduate	Graduate	Total
Number of people	1823	7591	21348	24192	12703	16740	2614	87011
%	2.10	8.72	24.54	27.80	14.6	19.24	3.00	100

In addition, among the resident population, there are 2903 low-income people in 1,732 households; 2,346 registered people with disabilities.

B.2 The SC/IP at present and the plans for the future.

Bansongyuanlu Sub-district officially launched safe community construction work in June 2007, having established the injury surveillance network system which takes District Center for Disease Control and community health as the center and in which the various functional departments jointly to participate. In accordance with the standards and requirements of safe community construction, to obtain the data of community injuries and accidents through visits, seminars, questionnaires and injury surveillance, and to carry out more than 20 safe promotion and intervention programs including traffic, schools, public places, workplaces, sports, fire fighting, the elderly, children and gas these 9 categories on this basis.

From 2009 to 2011, the total amount of community traffic accidents is reduced to 3,138 from 4,599, with a decrease of 31.77%; the amount of injury accidents within schools is reduced to 3 from 6, with a decrease of 50%; on fire safety, the amount of fire accidents is reduced to 16 from 24, with a decrease of 33.3%; the amount of elderly injury accidents is reduced to 21 from 44, with a decrease of 52.3%.

Are the demographic structure and the different risks sufficiently described?
 YES
 no If no what is missing

Informative profile provided.

Are the descriptions sufficient?
 YES

Very good outline of current plan, At site visit certifiers explored future directions. Site Visit:

<p>The community was named as “Shanghai Safe Community” in August 2008, and was named as “National Safe Community” in September 2009. through the safe community construction for several years, the overall security environment of the community has been improved, and the awareness of safety of the residents has been enhanced.</p>	<p>Bansongyuan adopts a continuous improvement approach. They have a robust strategic plan; using a plan do check model. They are also responsive to emerging issues by implementing new initiatives based on data/need.</p>
<p>B.3 The political support for the sustained injury prevention in the community and which parts of the program have been undertaken and/or supported by the regional government.</p> <p>In June 2007, the sub-district established an office of safe community construction to provide special office space and office equipment, allocating 5-10 million Yuan per year for safe community construction. In 2012, according to the needs of international safe community construction, the sub-district will increase investment to implement the construction funds of 400,000yuan. The sub-district initially establishes safety promotion Programs to promote incentive mechanism to reward the outstanding units and individuals. District Administration of Work Safety and other higher authorities also give support and guidance on the construction work, providing the security funds of 2-4 million Yuan for each safety promotion Program, and the sub-district safe community construction included in the annual evaluation.</p>	<p>Are the descriptions sufficient? <input checked="" type="checkbox"/> YES <input type="checkbox"/> no If no what is missing</p> <p>Appropriate political support provided.</p>
<p>B.4 The strategic program concerning the SP/IP work</p> <p>1. From 2007 to 2010, “<i>General Planning for Safe Community Construction (2007-2008)</i>”, “<i>2009-2010 Plan of Bansongyuanlu Sub-district Safe Community Construction</i>” and “<i>2007-2010 Implementation Plan on Bansongyuanlu Sub-district Safe Community Construction</i>” have been developed, and the goal of creating a municipal and national safe community has been established.</p> <p>2. In June 2010, Bansongyuanlu Sub-district developed “<i>Implementation Plan on Promoting Work of Safe Community</i>”, with to achieve and to join the International Safe Community Network listed as an important work objectives.</p> <p>3. In the sub-district’ s “<i>12th Five-Year Plan for Community Construction and Management (2011-2015)</i>”, safe production, fire fighting, road transportation, social security and other safety-related work plans have been developed, and the work objectives of creating the International Safe</p>	<p>Are the descriptions sufficient? <input checked="" type="checkbox"/> YES <input type="checkbox"/> no If no what is missing</p> <p>Appropriate strategic plan identified.</p>

Community has been established.

B.5 Who is responsible for the management of the SP/IP program and where are they based in the political and administrative organization?

Sub-district safe community construction office is specifically responsible for coordinating and management of safe community construction. The director of the Construction Office is served by the deputy director of the Sub-district Office. There are 9 full-time and part-time staff; District Board of Director, District Traffic Police Detachment, District Fire Brigade, District CDC, Bansongyuan Community Health Service Center and Sub-district Safety Supervision Branch, Comprehensive Management Branch, Home Affairs Branch, Social Culture Branch, Urban Management Division, etc. to assist with the construction work, and they will be responsible for the management, coordination and implementation of various safety promotion Programs.

Are the descriptions sufficient?
 YES
 no If no what is

B.6 The lead unit for the SP/IP program.

Programs	Lead Unit
Traffic safety	Seven Lochus and Eight Lochus of District Traffic Police, Sub-district Management Branch
Fire safety	District Fire Brigade, Fire Station Lochus, Bansongyuan Police Station, Sub-district Comprehensive Management Branch
Child safety	Security Office of District Education Bureau, Sub-district Social Culture Branch
Safety of the elderly	Sub-district Home Affairs Branch, Sub-district Association of Older Persons
Workplace safety	District Administration of Work Safety, Sub-district Economic Service Branch
Safety of public places	Sub-district Economic Service Branch, Penglai Park
Sports safety	District Sports Bureau, Sub-district Social Culture Branch
School safety	Security Office of District Education Bureau, Sub-district Social Culture Branch
Gas safety	Huangpu Office of Shanghai Gas, Sub-district Urban Management Division

Are the descriptions sufficient?
 YES
 no If no what is missing

Relevant outline of lead units.

B.7 Is the Safe Communities initiative a sustained program or a project?

The sub-district will take safe community construction as one of the main work of the sub-district, having established PDCA model for the work of safe community. The Construction Office, based on the summary of previous year construction work, puts forward that year construction work plan

Are the descriptions sufficient?
 YES

and plans the promotion Program plan. After examination and approval of the leading group of this construction, it shall be the implementation departments (units) to organize and implement. In the middle of the year, it shall be implementation units to report on the implementation of the Programs, and the construction office to organize the inspection and evaluation and coordinate to resolve relevant issues. At the end of the year, it shall be the promotion Program groups to submit a written summary report which shall be summarized by the construction office and reported to the construction leading group by combining injury surveillance. Then evaluation opinions on that year construction work shall be made, and suggestions on the construction plan for the next year shall be made to continuously improve the existing safety promotion Programs and to plan new safety promotion Programs, so that the Safe Community Construction makes continued progress.

The Office of District Work Safety Committee conducts an evaluation annually on sub-district safe community construction.

no If no what is missing

Appropriate measures undertaken to ensure sustainability of SC program.

B.8 Safety Promotion Plan and Target Coverage

Category and Target of Safety Promotion	Coverage
Traffic safety	All community roads, vehicle drivers and pedestrians
Fire safety	All residential buildings of the community and other places and people
Child safety	Pre-school children of 4 kindergartens within the community
Safety of the elderly	The elderly aged over 60 within the community
Workplace safety	All places of production and business activities and people within the community
Safety of public places	All public places and people within the community
Sports safety	All people using the equipment at the fitness place within the community
School safety	students at 10 primary and secondary schools within the community
Gas safety	All residential customers using natural gas within the community

Are the descriptions sufficient?
 YES
 no If no what is missing

Good reach outlined for each priority area.

B.9 Adoption and Implementation of Safe Community Target

Safety Promotion Program	Adoption and Implementation
Traffic safety	Seven Lochus and Eight Lochus of District Traffic Police to lead and Sub-district Urban Management Division to assist and cooperate with the organization and implementation
Fire safety	District Fire Brigade to lead, and Sub-district Comprehensive Management Branch, Fire Station Lochus, Bansongyuan Police Station, various neighborhood committees to assist and cooperate with the organization and implementation

Are the descriptions sufficient?
 YES
 no If no what is missing

Appropriate aligning of initiatives to relevant lead

Child safety	District Education Bureau to lead, Sub-district Social Culture Branch to assist and cooperate, and Hehuachi Kindergarten and other kindergartens to organize and implement	agencies.
Safety of the elderly	Sub-district Home Affair Branch to lead, and Community Life Service Center, neighborhood committees to assist and cooperate with organization and implementation	
Workplace safety	Sub-district Safety Supervision Branch to lead, and Hui Jinglou Hotel, Huangpu Xinyuan Property Management Department and other community-based enterprises to assist and cooperate with organization and implementation	
Safety of public places	District Greening and City Appearance Administration to lead, Sub-district Economic Service Branch to assist and cooperate, and Penglai Park to organize and implement	
Sports safety	District Sports Bureau to lead, and Sub-district Social Culture Branch and neighborhood committees to assist and cooperate with organization and implementation	
School safety	District Education Bureau to lead, Sub-district Social Culture Branch to assist and cooperate, and Datong High School and other schools to organize and implement	
Gas safety	Sub-district Urban Management Division to lead, neighborhood committees to assist and cooperate, and Huangpu Office of Shanghai Gas to organize and implement	
B.10 How are the safe community objectives evaluated and to whom are the results reported?		
<p>All safety promotion Programs shall carry out the safety performance evaluation. Overall community construction conditions shall be evaluated annually, and specific Programs evaluated once every six month. The evaluation methods mainly are professional evaluation (such as College of Engineering & Technology), to organize relevant personnel for on-site (Conference) evaluation and questionnaire on community residents (relevant people.)</p> <p>1. Working group of safety promotion Program shall be responsible for the safety performance evaluation of the intervention effects of the Program, and develop an adjustment plan based on the results;</p> <p>2. The Construction Office participates in the safety performance evaluation of the Program group, and is responsible for documenting the evaluation results and report to the leading group in order to grasp the overall construction direction and intensity;</p> <p>3. The construction leading group is responsible for the safety performance evaluation of the overall effects of Safe Community Construction, and report to District Administration of Work Safety.</p> <p>Injury surveillance group analyzes and evaluate results of accident and injury surveillance, report to the leading group and feedback to the Program groups, and put forward recommendations for improvement.</p>		
B.11 Economic incentives in order to increase safety are used.		
Are the descriptions	Are the descriptions sufficient? <input checked="" type="checkbox"/> YES <input type="checkbox"/> no If no what is missing Good evaluation objectives described.	

During the period of 2006 to 2011, input conditions of safe community construction:

Program category	Lead units (divisions)	Invested funds (ten thousand Yuan)	Main purpose (Programs)	sufficient? ✓ YES <input type="checkbox"/> no If no what is missing
Traffic safety	Seven Loehus and Eight Loehus of District Traffic Police, Sub-district Urban Management Division	147.7	Bicycle parking management, reconstruction of anti-typhoon and anti-flood transportation facilities, publicity on traffic laws and regulations, volunteer team building, etc.	<p>Comprehensive economic incentive information provided.</p>
Home fire safety	Sub-district Comprehensive Management Branch, neighborhood committees	331.74	Adding and reconstruction of fire facilities; to install residential iron gates and electronic monitoring equipment, publicity, training and joint exercises on fire prevention	
Child safety	District Education Bureau, Sub-district Social Culture Branch	15.5	Adding and maintenance of kindergarten internal fire and other safety technology defense equipment, and education and training of relevant security personnel	
Safety of the elderly	Sub-district Home Affairs Branch	125	Implementation of handrail Program, installation of barrier-free facilities, well-being passage (Ankang Tong), and "senior worry-free" accident insurance; construction and management of day-care centers for the elderly; safety publicity and training, etc.	
Workplace safety	Sub-district Safety Supervision Branch	20.3	Peasant workers' training; risk rectification of community units; the activity of Safe Production Awareness Month; construction of enterprise system; to carry out the promotional activities on safe production, etc.	
Safety of public places	District Greening Bureau, Sub-district Social Culture Branch	39.5	To add safety equipment and routine maintenance in Penglai Park, to carry out education and training of internal security personnel within the park, etc.	
Sports safety	Sub-district Social Culture Branch	143.67	The maintenance of fitness equipment of residential quarters and public places; training and management of volunteer team; safety publicity guidance, etc.	
School safety	District Education Bureau,	44.43	Adding and maintenance of fire equipment and other safety	

	Sub-district Social Culture Branch		technology defense equipment within schools, and education and training of school security personnel, etc.	
Gas safety	Huangpu Office of Shanghai Gas, Sub-district Urban Management Division	23	Mainly used for the reconstruction of old gas pipeline, etc.	
Other Programs	Sub-district Construction Office	25.6 万	To carry out injury surveillance, distribute promotional materials, and carry out questionnaire on residents' satisfaction, etc.	
Total				9.164,400 million yuan

B.12 The local regulations for improved safety.

Safety-related regulations and management measures developed by Bansongyuanlu Sub-district are mainly: “*Management Measures of District Entrance Guard*”, “*Patrol Check System*”, “*Management System of Children’s Playground*”, “*Management System of Fitness Place*”, “*Plan for Fire Fighting and Escape of Residential Quarters*”, “*Management System of Elderly Day-care Center*”, “*Food Health System for Eating Places of the Elderly*”, “*System on Transportation Volunteer Activity*”, “*Non-automatic Vehicle Management System*”, “*Park Patrol System*”, “*Monthly and Quarterly Reporting System of Risk Investigation and Management Information Statistics*”, “*Emergency Management System of Community Safe Production*”, “*Supervision and Management System of Community Safe Production*”, “*Accident and Injury Surveillance System*”, “*Safety Management System on Fire and Electricity*”, etc.

Section C

An infrastructure based on partnership and collaborations, governed by a cross-sector group that is responsible for safety promotion in their community

1.1 The cross-sector group responsible for managing, coordinating, and planning of the SP/IP program.

1.1.1 Institutions

Leading group composition of Bansongyuanlu Sub-district Safe Community Construction

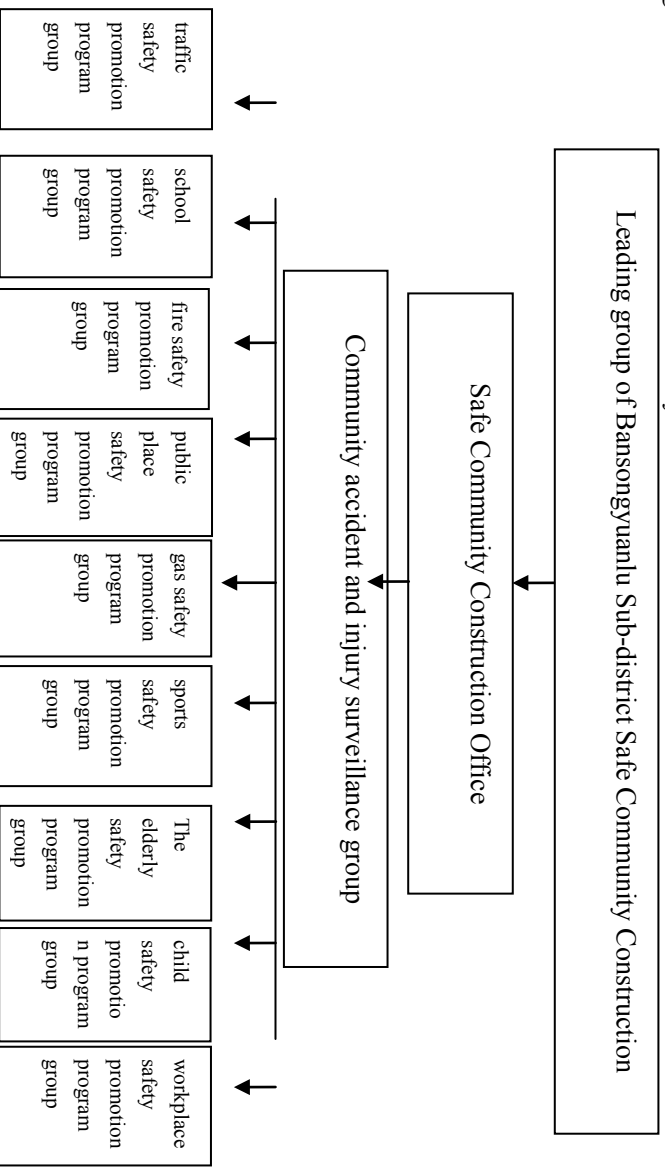
Leading group composition		Relevant units or departments		
Bansongyuanlu Sub-district Office		Functional offices of the sub-district		Are the descriptions sufficient? ✓ YES ✗ no If no what is missing
Relevant departments of Huangpu District Government		District Administration of Work Safety, District Public Security Bureau, District Civil Affairs Bureau, District Education Bureau, District Board of Health, District Bureau of Cultural Affairs, District Sports Bureau, District Greening Bureau, District Fire Brigade, Seven Lochnus of District Traffic Police		

Clearly and appropriately outlined.
Comprehensively

Community units	Bansongyuan Police Station, Sub-district Real Estate Office, Huangpu Office of Shanghai Gas, Hui Jinglou Hotel, Huangpu Xinyuan Property Management Company, Penglai Park, etc.	<p>described.</p> <p>Responsibilities for each lead unit very well-articulated.</p> <p>Effective use of tables to convey information.</p>
Medical institutions	Shanghai No. 9 People's Hospital, District CDC, Bansongyuan Community Health Service Center	
Educational institutions	10 primary and secondary schools and 4 kindergartens within the jurisdiction	
Social organizations and volunteer groups	Sub-district Association of Older Persons, Community Red Cross Ambulance Corps, Community Volunteer Team of Fire Protection, various types of mass culture and sports team	
Member composition of safety promotion Program group		
Promotion Program group	Lead unit	Participating departments
Traffic safety group	Seven and Eight Lochnus of District Traffic Police, Sub-district Urban Management Division	Relevant units, schools, neighborhood committees
Fire safety group	District Fire Brigade, Sub-district Comprehensive Management Branch	Bansongyuanlu Police Station, relevant units, schools and neighborhood committees
Child safety group	Safety Office of District Education Bureau, Sub-district Social Culture Branch	Community Health Service Center, kindergartens
Elderly safety group	Sub-district Home Affairs Branch, Sub-district Association of Older Persons	Sub-district Health Branch, Community Health Service Center, neighborhood committees, Community Life Service Center
Workplace safety group	District Administration of Work Safety, Sub-district Economic Service Branch	Safety Supervision Branch, relevant enterprises and their trade unions
Safety group of public places	Sub-district Economic Service Branch, Penglai Park	Safety Supervision Branch, Penglai Park, neighborhood committees
Sports safety group	District Sports Bureau, Sub-district Social Culture Branch	Neighborhood committees
School safety group	Safety Office of District Education Bureau, Sub-district Social Culture Branch	Community Working Committee, Community Health Service Center, schools

Gas safety group	Huangpu Sub-district Division	Office of Shanghai Gas, Urban Management	Sub-district Safety Supervision Branch, neighborhoods
------------------	-------------------------------	--	---

Organization Chart for Safe Community Construction



1.1.2 Responsibilities

Responsibilities of Bansongyuanlu Sub-district Safe Community Construction leading group:

1. To establish the working mechanism of safe community construction and to develop the construction planning and overall goal;
2. To integrate various resources inside and outside the community to guarantee human, financial and material resources;
3. To organize summary and commend work on the construction, and continue to push forward.

Responsibilities of Bansongyuanlu Sub-district Safe Community Construction Office:

<ol style="list-style-type: none"> 1. To make the annual work plan for sub-district safe community construction, responsible for the coordination and promotion of daily safe community construction work, and report to the leading group of safe community construction periodically; 2. To guide and urge safety promotion Program groups to implement key safety promotion Programs to help resolve issues discovered during the implementation, and make recommendations on continuous improvement; 3. To cooperate with Community Health Service Center to make a summary, sorting and analysis on the data of community injury surveillance points, planning safety intervention Programs; 4. To do exchanges on safe community information, and timely report sub-district safe community construction to higher authorities and participate in training and learning exchanges of domestic and foreign safe community construction; 5. To assist in the experts of safe community construction to do the evaluation of safety intervention Programs; 6. To do the collection, sorting and archiving and other basic work of materials for safe community construction. <p>Responsibilities of safety promotion Program groups:</p> <ol style="list-style-type: none"> 1. To cooperate with sub-district safe community construction to do exchanges on safe community information, file management, and other basic work; 2. According to the analysis of accident and injury investigation, hazard identification, risk evaluation as well as public wished and needs, to prepare relevant professional safety promotion Programs, timely reporting to the leading group of safe community construction; 3. To organize the implementation of key safety promotion Programs, develop an implementation plan, fulfill responsible personnel, and actively push forward based on time node and quality requirements; 4. To actively carry out promotion, education and training of key safety promotion Programs, integrate community resources, and mobilize community units and residents to participate in the implementation of key safety promotion Programs; 5. To do well the preparation work on review and evaluation data of safety promotion Programs; 6. To do well volunteer activities of relevant professions and key safety promotion Programs, and establish a file management and other infrastructure work. <p>Responsibilities of injury surveillance group:</p> <ol style="list-style-type: none"> 1. To establish and improve the community injury surveillance system, collecting injury data through a variety of ways; 2. To determine and guide the injury surveillance points to implement injury surveillance work; 3. To organize and conduct injury surveys, and carry out vocation learning and training for relevant staff at monitoring points. 	
<p>1.2 The local government and the health sector are collaborating in the SC/MP work.</p>	<p>Are the descriptions</p>

<p>Bansongyuanlu Sub-district Safe Community Construction operates under the unified planning and co-ordination of Huangpu District Government. District Administration of Work Safety conducts specific coordination and guidance, and District Education Bureau, District CDC, Seven and Eight Lochus of District Traffic Police, District Fire Brigade, Bansongyuan Police Station and other related department have give strong support and cooperation, continuously conducting a series of safety promotion Program, such as the construction of Elderly Day-care Center, technology defense and monitoring system of community public order, community fire safety facilities, etc. District CDC and Sub-district Community Health Service Center carry out injury surveillance and analysis to provide the basis for safety promotion Programs, and at the same time carry out the implementation of chronic diseases (high blood pressure) and other safety Programs.</p>	<p>sufficient? <input checked="" type="checkbox"/> YES <input type="checkbox"/> no If no what is missing Good description.</p>
<p>1.3 NGOs involved in the SC/IP work Since the safe community construction, it has obtained the response and participation from various social organizations, for example: Sub-district Association of Older Persons and Help Age Service Association assist the Program groups to do older persons’ safety investigation, safety knowledge promotion, safety lectures, older persons’ care and other interventions while to assist the Program groups to do older persons’ safety promotion Program. Sub-district Red Cross Ambulance Team actively carries out the promotion, training and exercises of ambulance knowledge to provide a variety convenient services of 9764 times per person and carry out volunteer activities of 874 times. Sub-district Women’s Federation participates in the mediation of family conflicts in the community, and plans to carry out the construction work of “Zero Domestic Violence District” at 22 neighborhood committees. Community fire volunteers participate in the promotion of the community fire safety knowledge to assist to carry out fire escape exercises of high-rise residential buildings. For detail of other social organizations to participate in the activities, see Criteria 1 and 2 Program work.</p>	<p>Are the descriptions sufficient? <input checked="" type="checkbox"/> YES <input type="checkbox"/> no If no what is missing Wide range of organisations involved. Certifiers acknowledge information also provided under sections C and D.</p>
<p>1.4 Systems for ordinary citizens to inform about risk environments and risk situations they have found in the community. After ordinary residents discover dangerous environment and dangerous situation, Channel 1: they can call relevant telephone according to their initial judgment, such as, Public Security 110, Fire 119, Ambulance 120, Traffic Alarm 122, Gas Hotline 962777, Quality Hotline 12365, Electric Power Hotline 95598; Channel 2: they can reflect to the local neighborhood committee, and then the neighborhood committee reflects issues and potential accidents to Sub-district Potential Accident Reporting Hotline 5307774, and the functional departments shall reply or make rectification.</p>	<p>Are the descriptions sufficient? <input checked="" type="checkbox"/> YES <input type="checkbox"/> no If no what is missing</p>
<p>1.5 The work is organized in a sustainable manner: First, To develop a sound working system, including “Regular Coordination and Discussion System”, “Accident and Injury Surveillance System”,</p>	<p>Are the descriptions sufficient?</p>

<p>“<i>Promotion and Training System</i>”, and “<i>Performance Evaluation System</i>”;</p> <p>Second, To determine division of relevant responsibilities, with the leading group fully responsible for the construction work, the Construction Office responsible for daily coordination, and safety promotion Program groups responsible for the implementation and advancing of safety promotion Programs;</p> <p>Third, To do the summary and evaluation timely. The Construction Office summarizes the work of Program groups to form an annual work report on safe community; at the same time puts forward the construction target and plan for the next year, and summarizes the annual safe community construction and reports to District and Urban Administration of Work Safety and National Safe Community Promotion Center.</p>	<p>✓ YES</p> <p><input type="checkbox"/> no If no what is missing</p> <p>Appropriately, sustainability is recognized as important.</p>
<p>Section D: Long-term, sustainable programs covering genders and all ages, environments, and situations</p> <p>According to injury surveillance situations of accident injury and medical health institutes from 2006 to 2009 provided by functional departments, Program groups draw out and implement the following injury prevention programs (Programs) based on an analysis conclusion.</p>	<p>Are the descriptions sufficient?</p> <p>✓ YES</p> <p>✗ no If no what is missing</p>
<p>2.1.1 Workplace safety program</p> <p>Background:</p> <p>As of December 2011, there are 429 enterprises within the jurisdiction, including 19 enterprises for risk management and use, and 45 manufacturing enterprises. These enterprises are small, having poor security management infrastructure, old and outdated housing equipment (facilities), a large number of foreign workers, and unoptimistic safety production situation.</p> <p>Intervention target:</p> <p>Implement the responsibility of corporate safety production and enhance hidden danger investigation and elimination of community units, with promotion, education and training as the starting point to mobilize employees to actively participate in safety promotion, preventing and reducing accidents and injuries of safety production to strive for continuous zero accidental injury fatalities of safety production.</p>	<p>Well laid out with good description of background, intervention target, interventions/ programs and effects.</p>
<p>Interventions:</p> <ol style="list-style-type: none"> To implement the responsibility of safety production, and grasp the signing work of “Responsibility Document for Safety Production Target”; To extensively carry out promotion and education activities to organize to visit “Shanghai Safety Production & Science and Technology Achievement Exhibition”, watch “Safety Production Warning Film”, and to organize to carry out “Safety Month” activities to distribute all kinds of safety production inform book as well as “Safety Tips for Citizens”, “Manual for Community Security Prevention”, “Safety Production Common Sense”, and other brochures, so that the concept of safety production deeply rooted among citizens; To organize safety training to enhance safety awareness. From January 2007 to the end of 2011, main persons in charge of 259 enterprises and safety cadres have been organized to participate in safety training; 72 special operation personnel organized for job training; 3274 peasant works organized for the training on basic knowledge of safety production; 	<p>Work streams covered include: workplace, children, school, traffic safety (including details related to entering programs), fire, elderly and gas safety.</p>

<p>4. To help the establishment and improvement to implement safety responsibilities. To urge to help 238 enterprises to establish a safety management system, establishing the “Record Card for Workers’ Safety Production”. At the same time, to urge enterprises to develop the appropriate emergency response plan in accordance with their respective characteristics;</p> <p>5. To strengthen security checks to eliminate the hidden dangers. Daily checks take sub-regional method to implement, not less than 2000 households per year, and enterprises of over 50 m² checked 1-2 times per season, with 100% full coverage. Since 2006, 9495 households and 13651 sets of special equipment have been checked, and 7596 hidden dangers have checked and eliminated and 55 letters of notice for rectification have been issued;</p> <p>6. To promote the evaluation mechanism. To conduct the evaluation on the degree of credit of safety production from 7 aspects for 426 production and operation units within the community. As a result, 29 enterprises obtain Class A and 406 enterprises obtain Class B. Through the evaluation, to continuously push forward the enterprises in accordance with the standardization requirements to do workplace safety work;</p> <p>7. To strengthen the accident management to adhere to “Four Imperative Elements”, namely: accident causes not detected; accident perpetrators not handled; accident prevention measures not drawn out; accident perpetrators not educated;</p> <p>8. To establish a basic ledger, having established a file management accounting system for 429 enterprises within the jurisdiction, and continue to supplement and improve the corporate information database in order to carry out workplace safety checks with target, and do the inspection records and monthly check report, implementing the classified dynamic supervision;</p> <p>9. To play the social forces to jointly participate in supervision. To set up a safety production team with 22 specially invited supervisors and an volunteer team of safety production with 55 volunteers, to timely provide the dynamic information on community-based enterprises for safety supervision departments, to assist to carry out the promotion of safety production laws and regulations, and to report enterprises’ acts in violations of regulations.</p> <p>Effects:</p> <p>1. The safety management power of demonstration units has been strengthened. The management system is more robust; the response plan is more complete; the staff are more conscious to perform the safety system, resulting in a significant reduction in safety hazards and safer workplace;</p> <p>2. As enterprises have enhanced the subjective consciousness of responsibility for safety production, signing companies have been increased year by year, and the safety management within enterprises has been strengthened. 93% of the enterprises have established a safety management system and response plan. Since 2009, there is no safety production accidents and injuries within the community;</p> <p>3. Enterprises generally strengthened safety education and training for employees, establishing the management system of a record card for workers’ safety production with one for each worker. Since 2006, the number of the employees, especially migrant workers participating in safety knowledge training has been increased year by year;</p> <p style="text-align: center;">Number of migrant workers to participate in training over the years</p>	<p>In addition, a further 4 individual programs are briefly outlined in tabular format.</p>
--	--

Year	2007	2008	2009	2010	2011
Number of migrant workers	826	678	678	706	1212

4. The capital investment of enterprises in terms of safety has a certain increase. The safety production hazards have been significantly reduced through some measures, such as to post safety warning signs in the workplace, to allot labor protection articles, to timely update the equipment that have passes the service life, to strengthen the routine inspection of protective devices, to timely repair the damaged parts, and to timely replace the aging wires in the workplace, etc

5. Basically get know of the basic situation of community supervision enterprises, as well as types, quantity, distribution, inspection, maintenance, etc of special equipment.

2.1.2 Child safety program

Background:

Bansongyuanlu Sub-district has 4 kindergartens with thousands of children. The child injury situations within the jurisdiction are mainly: to get lost, to be tripped over, bumps, burns, strange objects put into mouth, etc. These occur mainly due to poor safety awareness and self-protection ability of children, parental controls not in place, etc.

Intervention target:

To enhance safety awareness of teachers and parents, to master safety knowledge of child protection, and to provide a safe living and learning environment for young children through the cooperation mode of safety education of kindergartens, families, community units, volunteers and others.

Interventions:

1. To establish and improve kindergarten safety system. According to kindergarten teaching, logistics, administration and other work, to develop related safe working system, so that each performs its own responsibility, and responsibility reaches to each person and the evaluation of rewards and punishments and pursuing the accident responsibility shall be carried out. At the same time, the response plan of safety accidents is developed, so that the personnel of kindergartens can conduct prevention monitoring, timely detection, quick response and effective containment for young children's accidental injuries;
2. To strengthen the investigation of safety risks. Adhere to the combination of major inspection, maintenance and daily safety investigation to timely carry out safety interventions;
3. To organize faculty members to carry out all types of safety education and training, including fire-fighting training, operation training of "three members" (nurses, nutrition teacher and health-care teacher), monthly major safety training, rescue training of children's accident and emergency, etc.;
4. To organize young children to carry out rich and colorful safety education activities, including posting small footprints on the stair steps,

suggesting the young children to walk on the right up and down stairs, and other implicit educational activities; theme educational activities for burns, falling, fire, etc.; activities that help to develop a safe daily living behavior, and so on.

Effects:

Years of child safety intervention Programs have improved self-care, self-protection and help ability of young kindergarten, and enhanced a sense of responsibility that kindergartens, families and community units to pay great attention to for child safety to jointly create a safe living and learning environment for young children.

2.1.3 School safety program

Background:

Bansongyuan Sub-district has 10 primary and secondary schools, including 3 senior high schools, 3 junior high schools, 3 primary schools and 1 technical secondary school, having about 10,000 students at school. Although there is no significant student injury accident in the schools in recent years, there are 6 general accidents and injuries in 2009, 1 general accident and injury in 2010 and 3 general accidents and injuries in 2011 according to the statistics of schools' health rooms, which are mainly caused by inappropriate use of school supplies, frolic after class, improper physical exercises as well as traffic accidents during the period of to and from school.

Intervention target:

1. To carry out campus safety education to enhance the safety awareness of the faculty and students and to improve safety prevention and self-protection ability of students, reducing injury accidents;
2. To carry out campus safety construction to strengthen school safety management and to strengthen the investigation of security risks, preventing and reducing various types of injury accidents.

Interventions:

1. To make use of school classes, fire (earthquake) escape drill and other ways to strengthen safety education to enhance students' awareness of security prevention and to strengthen students' safety prevention skills;
2. To establish a sound guard on-duty, safety inspection, hazardous materials' management and other systems to determine job responsibilities and improve the registration system of school safety accident and injury surveillance;
3. To improve the monitoring probe, fire extinguishers and other technology defense and material protection equipment, and strengthen the management of the equipment to implement safety responsibility system level by level and strengthen inspection to eliminate hidden dangers;
4. Rely on school surrounding at Bansongyuan area to hold this communication platform, regularly convening District Youth Protection Office, Eight Lochus of District Traffic Police, Sub-district functional departments, District Police Station and other departments as well as teachers of school comprehensive management and separate management principal to participate in the meeting to improve the discovery and exclusion mechanism of safety risks around schools.

<p>Effects:</p> <p>Through the school safety plan, each school generally enhances safety awareness, establishes effective safety work mechanism and work system, and can take the initiative to conduct school safety intervention activities. There is no major injury accident for regional primary and secondary schools in recent years.</p>	
<p>2.1.4 Traffic safety program</p>	
<p>Background:</p> <p>There are 35 roads in the region, including Zhongshan South Road, Lujiabang Road, Xizang South Road, upper and lower ramp of Nanpu Bridge, xizang South Road Tunnel, upper and lower ramp of Inner Ring Highway and other main traffic roads, via 45 bus lines, as well as Line 4, 8, and 9 of Rail Transit Station, bus hub of Nanpu Bridge, Long-distance Bus Terminal of Nanpu Bridge and Tourist Distribution Center of Nanpu Bridge, and other traffic distribution points. In 2009, 4599 traffic accidents happened on the roads of the community; 498 persons injured due to accidents and 1 person killed; the economic losses of 1.04 million yuan.</p>	
<p>Intervention target:</p> <p>Through the implementation of traffic safety promotion Programs, increase the investment in traffic safety facilities in the area to basically eliminate the traffic disorder and jaywalking phenomenon in the region. The coverage of the resident population of the community to accept the promotion of traffic safety reaches 95%; traffic accidents of the community dropped 5% every year.</p>	
<p>Interventions:</p> <ol style="list-style-type: none"> 1. There are 207 promotional activities on traffic safety laws and regulations, knowledge, etc. for neighborhood committees, schools, units, building sites, etc. Post nearly 340 sets of promotion pictures and flip charts, display more than 170 pieces of promotion panels, distribute more than 2400 copies of promotional materials and distribute more than 500 copies of promotional discs, with more than 11 million people to benefit. 2. To form 51 volunteer teams of over 600 persons, and to carry out more than 200 traffic safety volunteer activities and more than 13,500 persons to participate in; 3. Through the quarterly regular meeting system, to coordinate and solve the difficult problems of traffic safety. For the road junctions or sections with complex traffic situations, especially for the nearby primary and secondary schools and kindergartens, to carry out activities to safely protect schools and to arrange the policemen to maintain the traffic order during the period of to and from school twice a day to ensure the safety of students; 4 To establish the risk investigation system of traffic safety to regularly inspect transport facilities so that transport facilities can be repaired within 48 hours after the lack and damage reported. 5. To set up 2 intersections to demonstrate traffic safety and to carry out long-term volunteer activities of traffic safety; 6. To integrate resources, and to actively carry out special rectification activities. Since 2009, illegal parking, unlicensed operation, illegal 	

modifications and other illegal violations of special management with “Governance of Illegal Operation and Centralized Action of Illegal Passenger Vehicles and Disability Vehicles”, “One Hundred Days of Special Inspection Action of Drink Driving”, etc. as the theme have been conducted.

Effects:

In 2011, 3138 traffic accidents happened on the roads of the community, decreased by 31.8% compared to 2009; 264 persons injured due to accidents, decreased by 47% compared to 2009, and 1 person killed; resulting in the economic losses of 690,000 yuan, decreased by 33.7% compared to 2009. The coverage of the resident population of the community to accept the promotion of traffic safety reaches 98%.

2.1.5 Household fire safety program

Background:

Among the residential buildings of the community, old-fashioned public houses and brick and wood houses still account for a large proportion, and most of the housing ages are more than forty or fifty years with lower fire protection rating. According to statistics, 24 fires happened in this region in 2009, including 11 fires of residential buildings, accounting for 46% of fire accidents.

Intervention target:

1. To mobilize the whole society to participate in community fire safety work to reduce fire safety hazards in this area;
2. To enhance the construction and renovation of the fire safety facilities in the residential area year after year;
3. To enhance residents’ awareness of fire safety and self-protection and self-help ability;
4. To reduce the fire accident rate, and to reduce casualties and economic losses.

Interventions:

1. To increase fire-fighting facilities in residential areas. It shall be funded by the sub-district to add fire extinguishers in the old residential buildings and to install fire-fighting “water pipes”, etc. and regularly to maintain simple fire-fighting sprinkling in the old public houses, replace aging wires, and provide fire-fighting supplies for community residents. From 2010 to the first quarter of 2012, the total of investment funds is about 400,000yuan;
2. To strengthen the promotion and education work of fire-fighting safety. To distribute “Inform Book of Fire Safety”, “Shanghai Family Fire-fighting Reader”, “Common People to Talk about Fire Fighting” and other promotional materials to the residents in the community; neighborhood committees to add propaganda showcase of fire fighting in the residential buildings, establish the education room of fire fighting, and organize community residents to participate in lectures on fire fighting; the electronic display screens in the residential areas often play fire safety content to improve the awareness and ability to prevent fires for community residents;
3. To carry out risk investigation work in residential areas and various types of fire-fighting special rectification. To mobilize fire-fighting volunteers and residents in the community to participate in checking and correcting work of fire-fighting risk investigation organized by neighborhood committees, and the Sub-district Office shall be together with the police station, property management, and related enterprises to carry out special

rectification of corridor pushing articles, clearing of fire-fighting access, comprehensive renovation of old district kitchen, etc.

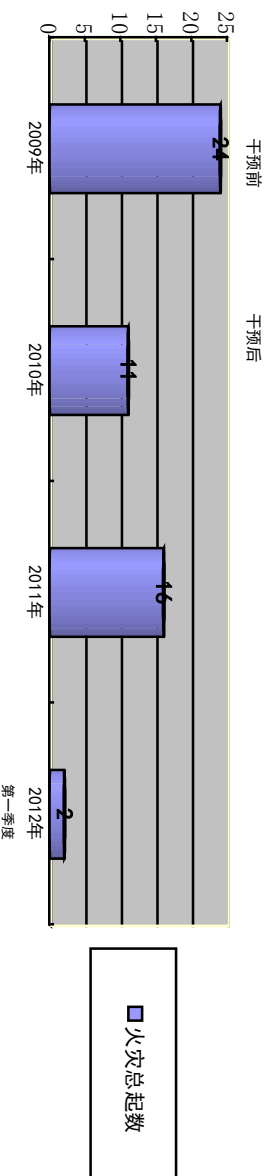
4. To organize community residents to carry out fire evacuation, escape and fire-fighting drills. Combining Shanghai No. 1 Practical Program in 2011, to organize community residents to participate in fire evacuation, escape and fire-fighting drills, and carry out fire evacuation, escape and fire-fighting drills for 133 residential buildings (high-rise buildings) to achieve full coverage of high-rise residential buildings;

5. To strengthen the construction of fire-fighting volunteer teams of the community and establish a voluntary fire brigade. In 2009, the sub-district established a community fire-fighting volunteer team; in 2011, neighborhood committees established voluntary fire fighting team, and the team under the leadership of neighborhood committee carries out checking and correcting of fire hazard investigation in residential buildings per month, and alarm immediately once fire is found and start to fight and rescue to initialize the fire.

Effects:

In 2011, there were 16 fires, including 13 fires of residential buildings. Although the total amount of fire declined compared to 2009, fires of residential buildings roses slightly.

Comparison chart for effects before and after Program intervention



(干预期前： Before intervention; 干预期后： After intervention; 第一季度： first quarter; 火灾总起数： total number of fires)

2.1.6 Elderly safety program

Background

There are 21,274 older people aged over 60 in the community, accounting for 23% of the total population of the community; 4634 older people for 2781 pure old families (including 929 older people living alone), accounting for 21.8% of the total number of older people in the community, so it is a community with more obvious aging feature.

According to statistics, from 2006 to 2011, 240 cases of injury accidents of older people in the community, with 240 older people injured, including 158 older people injured due to falls, accounting for 65.8% of the total number of injured older people and the number of injured people due to bumps and traffic accidents respectively accounting for 19.6% and 5.4%; viewing from the degree of injury, 14 dead, accounting for 5.8% of the

total number of injured people; 45 seriously injured, accounting for 18.8%, and the rest are minor injuries; viewing from the injury place, it mainly distributes in homes, roads, and public facilities of place of residence, etc.

Intervention plan

1. To construct service institutes for older people, and conduct safety intervention for older people from day care, health management, cultural and sports activities, etc.

2. To increase life protection of older people, and concern the life safety of older people from many aspects by way of injury insurance, solace, etc.

Interventions

1. To be equipped with emergency call equipment. To install “well-being passage (Ankang Tong)”, help doorbell, sunshine pager, and other emergency call equipment for 1108 households of older people families in the community to cause safety accidents due to the elderly not attended or not obtaining assistance and care timely in case of emergencies.

2. To improve the environment and facilities. To install handrails of front steps and up and down stairs for part of residential buildings; to install stainless steel handles for bathrooms of pure old families; to reconstruct barrier-free facilities for part of residential buildings in the community; to rebuild uneven roads partially.

3. To enhance safety awareness. To strengthen the promotion of safety knowledge, distribute safety inform to older people, and hold more than 60 lectures on older people, with thousands of older people to benefit, and to help older people to understand the common sense to prevent harm to the elderly and to improve self-protection awareness of the elderly.

4. Elder day-care center. Sub-district Elderly Day-care Center is located in the Community Life Service Center, with complete safety handrails, non-slip mat, stair logos, safety exit logo, warning logo of earth slide in a rainy day and other safety facilities; to install elevators to facilitate the elderly to walk; and regularly conduct safety maintenance, while arranging specific person for morning and evening shuttle to the elderly day-care center with specific vehicles. The day-care center now has 60 older people, and the staffs organize older people to carry out gymnastic exercises, singing, drawing and calligraphy, hand-making and other cultural and sports activities every day.

5. Eating place of older people. To set up 2 eating places of older people to facilitate the elderly to dine nearby, avoiding safety risks caused due to older people's cooking by themselves. Now there are nearly 400 older people to dine every day. To establish food hygiene regulations for eating place of older people to ensure healthy and cheap food.

6. Leling Fitness Gym. Through public welfare bidding and tendering, to introduce Leling Fitness Gym, a good helper of social organization to provide health counseling, physical therapy for rehabilitation, solace and other public welfare services to the elderly, so that the elderly “know disease, and treat disease”. Up to now, 8272 older people have been conducted for health counseling in the community, establishing 3002 copies of health files, conducting physical therapy for rehabilitation for 5554 older people and rehabilitation massage for 1248 older people, and holding 16 health lectures and situational training.

7. Help Age Service Association. Daily life care of older people, housekeeping services, and solace as the main content, to provide home care services for 2198 older people, and to carry out the “Six Help” activities, that is, help bathing, help cleaning, help dining, help to see a doctor and help to walk.
8. Association of Older People. To cultivate reading party, English group, drawing party, knitting group, drama group and other activities to build a platform for “older people to learn, to do and to get happiness”. There are nearly 500 members currently. Branches (groups) of Association of Older People are distributed throughout neighborhood committees to lay a good foundation for uniting the older age group and carrying out activities.
9. “Senior worry-free” Program. In the past three years, it shall be the sub-district to buy “senior worry-free” accident insurance for 8650 older people needing special care.
10. Spiritual care. For the total 929 older people living alone, volunteers console older people by phone call or dropping in every day to ensure safety of the elderly; regularly to come to visit the elderly, and accompany them chat and talk, giving spiritual consolation and preventing metal illness.

Effects

Viewing from the statistics results, there were 21 injury accidents of older people in 2011, decreased by 67.7% compared to 65 cases in 2006. Viewing from the type of injury, there were 12 fall accidents of older people in 2011, decreased by 73.3% compared to 45 cases in 2006; bump accidents in 2011 decreased by 40% compared to that in 2006.

2.1.7 Gas safety program

Background

There are 38,200 households of gas users (residents) in Bansongyuanlu Community, including 3820 households of old users below two level, accounting for 10%, and the main security risks are: first, some of long use age of gas pipeline, having corrosion phenomena; especially, branch pipes of old public houses have more corrosion phenomena; second, there are still residents to use non-safety stoves and flue type water heater; third, rubber hose aging or using non-dedicated rubber hose; four, the phenomena of individual living in the kitchen exists. According to injury statistics of gas accidents, from 2006 to 2011, there are 3 gas accidents in the community, resulting in 1 people killed, and 5 people poisoned.

2006-2011 Injury Statistics of Gas Accidents

Year	Number of accidents	Involved households	Death toll	Number of people poisoned
2006	1	1		1
2007	1	1	1	
2008	1	1		4
2009				
2010				
2011				

合计	3	3	1	5
----	---	---	---	---

Intervention target:

The coverage of safety inspection of gas users in the community reaches 100%, and the rectification rate of user security risks has gradually increased; to strengthen inspection and renovation of gas facilities in residential areas, especially old houses; to reduce gas accidents, with zero death of community gas accident.

Interventions:

1. Sub-district to lead, it shall be RC property company and gas company to sign the “Agreement on Construction of Community (Neighborhood Committee) Gas Safety” to do the treatment of gas emergency, emergency repair and promotion and education work.
2. To renovate old pipes, and to have renovated gas branch pipes of Lane 230, 240 and 256 at Haichao Road, Lane 50 at Baotun Road, and Lane 247 at Zhongshan South Road from 2008 to 2011, with the area of about 7500 meters and 685 uses to benefit from this renovation.
3. The gas company conducts a safety check to the users of community residents every two years, distributes *Opinion for Rectification of Gas Safety Potential Hazards* to the users suffering potential safety hazards, supervises and helps the residents to rectify. In particular, carry out regular return visit by telephone to the users who use unsafe stoves and stove-piped water heaters and supervise the rectification.

Rectification of Gas Users

Potential Hazards	2008		2009		2010		2011	
	Number of Potential Hazards	Number of Rectification	Number of Potential Hazards	Number of Rectification	Number of Potential Hazards	Number of Rectification	Number of Potential Hazards	Number of Rectification
Use of Unsafe Stoves	85	66	38	23	48	11	3	2
Stove-piped Water Heater	9	9						
Ageing of Rubber Tubes	107	78	47	19	39	27	1	1
People Living in Kitchen					9	9		

4. In case that people live in the kitchen, then the relevant departments together with gas company will order to rectify. Ensure that the gas room is separated with bedroom. A total of nine households are ordered to move out, and table shift processing is required.
5. Conduct itinerant exhibition with gas safety publicizing pictures, and carry out extensive publicity activities in 22 neighborhood committees of the community through distribution of brochures and community newspaper, blackboard newspaper and other many various forms, to improve the awareness rate of gas safety knowledge of the community residents and achieve full coverage of gas safety publicity.

6. Invite the gas company to hold special gas safety knowledge training every year. From 2006 to 2011, more than 50, 000 people participating in the training in total.

7. Provide special services of gas safety to some families of the old and childless, the elderly living alone and the disabled in the community, achieve safety inspection once a year, and replace the ageing rubber tubes free of charge. In addition, the sub-district provides subsidies to replace unsafe stoves and stove-piped water heater. 183 potential hazards in total have been detected from 2006 to now, and 165 have been rectified; therefore, the rectification rate is 90.2%.

Effect:

1. Through inspection, publicity and rectification, the rectification rate of gas potential safety hazards in the community is improved year by year, with 76% in 2008 and 81% in 2011.
2. The gas accidents are reduced year by year, and there are no death and other major injury accidents since 2008.

2.2 Other Programs

Program Name	Implementation Units	Cooperative Units	Planned Measures	Target Population or Place	Duration	Effect Evaluation
Safety Activity Week	Hehuachi Kindergarten	Station Fire Lochus, parents of children	Popularize fire control and other safety knowledge, learn to protect oneself in proper way in the face of danger and disasters through drills	All children and staff in the kindergarten	2009~	The children can be peaceful in drills, know and apply some methods to protect themselves.
“Cleaning up fire hazards” campaign	Various kindergartens in community	Station Fire Lochus	Organize fire safety working group, carry out safety self-inspection to the facilities in the kindergartens, and ensure no debris in fire fighting access and pump house and normal operation;	Fire safety groups in kindergartens	2009~	Standardize and strengthen the safe operations of emergency (such as use of fire hydrants and water pump, etc.), and enhance the safety prevention capabilities in the kindergartens in all respects.
“Five Prevention” Work	Datong High School	None	Strengthen the management on prevention of fire, burglary and various injuries and invasion, gas defense and prevention of masses from suffering	All students in school	2006~	Improve and implement the relevant safety system, and achieve nipping in the bud.

			epidemic, establish the corresponding system, and take targeted measures			
“Accomplishing at a time” safe operation method	Penglai Park	None	Carry out to maintenance, cleaning and maintenance workers, achieve smooth traffic, maintain no debris and sundries, keep the toilet floor from wet and slipping, and timely clear away operation tools.	Penglai Park	2006~	Basically achieve no potential safety hazards in the roads of park, public toilets and other public places.

2.3 Bansongyuantu Sub-district carries out “five-entering” traffic safety program under the guidance of the district government

Entering of community

22 neighborhood committees have set community traffic safety publicity windows and billboards, “five-entering” publicity police in No. 7 and No. 8 detachment of traffic police regularly go deep into the neighborhood committees to conduct traffic safety publicity, put up publicizing pictures on traffic safety publicity column in the community, distribute publicity materials, disseminate related traffic safety knowledge to the community residents and create good traffic safety publicity atmosphere. The people’s police also disseminate the importance and notices of following traffic laws to the community residents.

Entering of School

For different age groups, respectively carry out “traffic safety entering school” series promotional activities in kindergartens, primary schools and middle schools, and develop traffic safety promotional activities with theme of “care for life and civilized traveling” in many forms. Make the children develop the habit of consciously following traffic regulations from childhood, standardizing walking and cycling behavior and learning to cross road junctions in a civilized manner, and enhance self-prevention awareness.

Entering of Construction Site

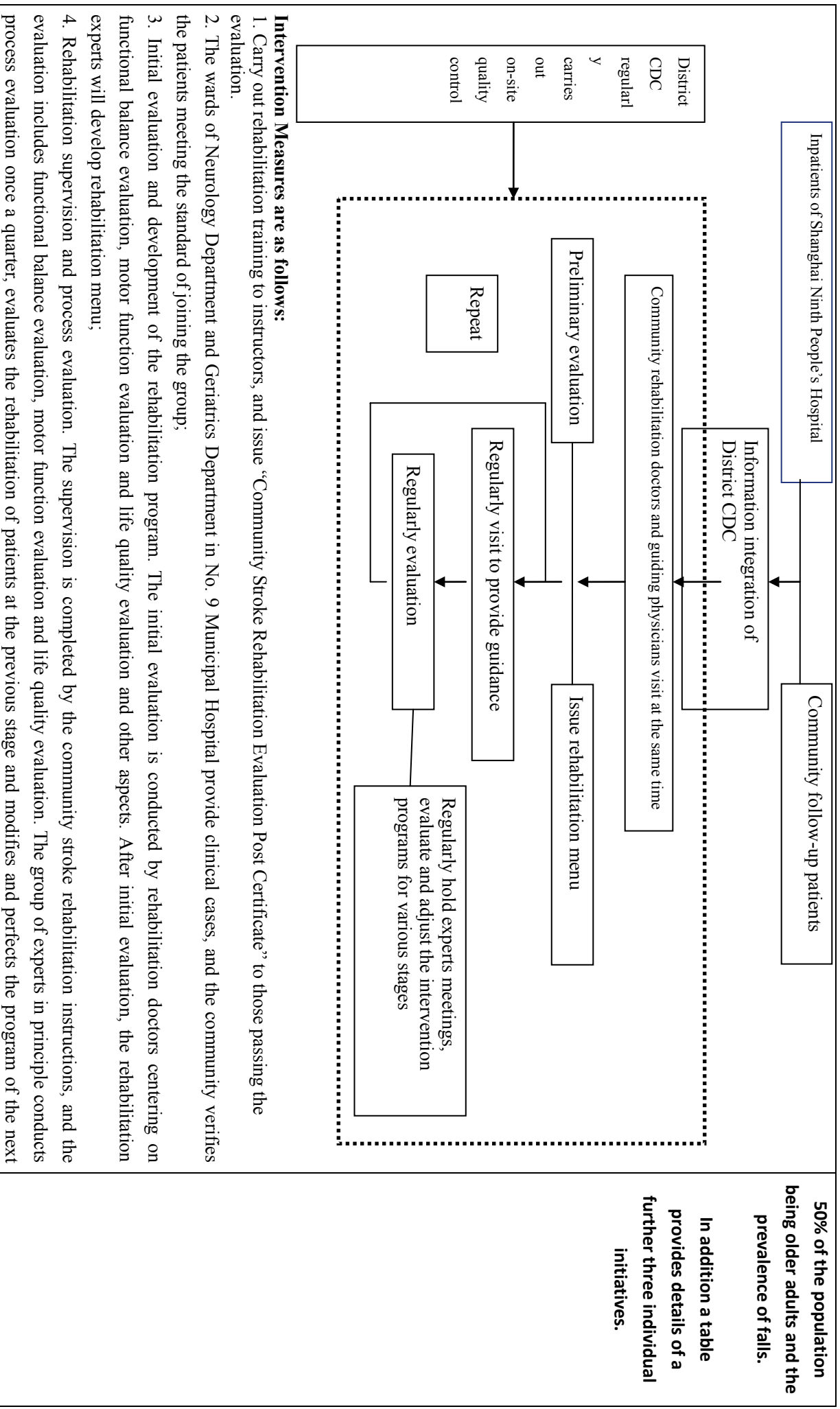
The traffic police detachment takes the initiative to contact the construction site, use the method of “staging time for construction”, appropriately develop the operating hours of construction vehicles, make every effort to enable the construction vehicles to avoid peak period, and ensure the safe and orderly road traffic order around the construction site.

Entering of Enterprise

Carry out traffic safety publicity to the enterprises and public institutions in the district, enhance the safety awareness of drivers, observe regulations

<p>and laws, and change the bad driving habits to jointly create a good traffic environment.</p> <p>Entering of Home</p> <p>Conduct traffic safety publicity and education to people and families of different levels by applying subject training and subject activity, posting publicity pictures, distributing publicity materials and other various publicity and education forms, to promote the members of each family in the community to enhance traffic safety awareness and consciously abide by traffic regulations. Through door-to-door visits by people's police and cadres of neighborhood committees in the community, 3000 questionnaire surveys were obtained, over 4700 publicity materials (brochures) were distributed, and 1600 households were given visiting safety publicity.</p> <p>In the past few years, the traffic safety Program team has successively carried out traffic safety laws and regulations and traffic safety knowledge publicity activities for more than 270 times, totally distributed publicity materials (manuals) for more than 2400 copies, put on publicizing pictures and posters for nearly 340 sets and displayed more than 170 publicity boards, benefiting more than 110, 000 people.</p>	
<p>Section E</p> <p>Programs that target high-risk groups and environments, and programs that promote safety for vulnerable groups;</p> <p>3.1 Programs for High-Risk groups</p> <p>3.1.1 Safety Program for High-Risk Operators</p> <p>Background:</p> <p>The operators working in high-risk environment such as climbing, clean-up and distribution often have uncertain potential safety hazards, and they are high-risk operators. In May 2007, there was an accident that the tank cleaner due to lack of safety knowledge failed to take appropriate protective measures at work to fall from the 6th floor and die.</p> <p>Intervention target:</p> <p>Carry out safety interventions on high-risk operators, strengthen safety supervision, increase protective measures and enhance the safety awareness of operators to improve operation safety.</p> <p>Intervention Measures:</p> <ol style="list-style-type: none"> 1. Climbing operators: It is specified that the registration must be conducted and protective measures must be implemented in case of more than two meters. Provide safety helmets, safety belts and life ropes for 56 operators; 2. Distribution operators: Provide insulating shoes and insulating gloves for 78 electricians, provide safety goggles against radiation for employees in monitoring room, regularly detect the equipment contacts of power distribution room, carry out insulation tests to percussion drill, submersible pump, electric drill and other electrical equipment, prevent the housing from electrification, and send various measuring instrument for inspection and calibration every year to ensure the validity of relevant data; 	<p>Are the descriptions sufficient? <input checked="" type="checkbox"/> YES</p> <p><input type="checkbox"/> no If no what is missing</p> <p>Good description covering, background, intervention target, intervention measures and effects.</p> <p>High risk groups included: workplace safety for high risk operators, rehabilitation of people following a stroke (certifiers assume to</p>

<p>3. Clean-up operators: 86 clean-up operators are equipped with protective masks to prevent hydrogen sulfide poisoning: the modification of the secondary biochemical equipment was conducted in 2008, completely solving the hidden danger of hydrogen sulfide poisoning.</p> <p>Effect:</p> <p>Since the implementation of Program intervention, the safety awareness of operators is significant enhanced, protective measures are in place, the safety of operation environment is significant improved, and there is no significant safety accident for high-risk operators in the community. However, there were three general safety accidents such as the pricking of fingers caused by mechanical failure, and the phenomena of operations against regulations by high-risk operators (such as climbing operation without safety helmet or safety rope) were significantly reduced from 16 cases in 2009 to 4 cases in 2011.</p>	<p>prevent further harm/injury), kindergarten children, mental health for high school students and falls prevention for the elderly.</p>
<p>3.1.2 Intervention Program of Early Stroke Rehabilitation</p> <p>With the worsening of degree of aging, disease spectrum gradually turns to non-communicable diseases, especially cardiovascular and cerebrovascular diseases, for which the disability rate of stroke is high, therefore the sub-district starts and launches early stroke rehabilitation Program. In accordance with the following workflow, intervention is given to the people aged 40 – 70 in community suffering from stroke for three months with limb movement disability.</p>	<p>Management of people with hypertension is also identified as a high risk group. Although an important health concern, this work program should be highlighted within a primary health care plan NOT a community safety document.</p>
	<p>Consequently, the certifiers have not taken this program into account in their assessment of high risk groups. Following the site visit certifiers could see justification as too why programs on hypertension were included due to the</p>



stage;

5. Quality control. Level I quality control: completed by instructors, mainly responsible for checking the rehabilitation activities fulfilled by patients and the filling of evaluation form and other various forms. Level II quality control: completed by District Center for Disease Control and Prevention, mainly for quality control and guidance of various aspects of the entire Program.

Effect:

Display of statistical results of patients participating in rehabilitation Program: the scores at late stage of various score indicators are higher than the scores at initial stage, so the rehabilitation intervention is effective.

3.1.3 Level III Management Program for Hypertension

Background:

Hypertension is the most common popular cardiovascular disease in the world, and the main cause of disability and death for heart, brain and kidney diseases. According to WHO prediction, the death rate of cardiovascular disease by the year of 2020 will rank first.

Intervention target:

1. By 2010, the management rate of hypertension patients reached 25% and control rated reached 50%. The stroke attach rate of hypertension patients was reduced by 10% on the basis of 2001;
2. By 2015, the management rate of hypertension patients reached 50% and control rated reached 60%. The stroke attach rate of hypertension patients will be reduced by another 5% on the basis of 2010.

Intervention Measures:

1. Master the basic information of the distribution of community hypertension, related diseases and risk factors, develop the said community hypertension prevention and treatment plans and organize to implement, and conduct quality control and effect evaluation;
2. Detect and find out the community hypertensive by means of measuring the blood pressure of the patients aged over 35 and diagnosing for the first time, establishing residents' health records and organize community residents for health examination; gradually monitoring the hypertension, related diseases and risk factors to provide basis for developing hypertension prevention and treatment strategies in the said community;
3. Carry out health education to community people, provide the knowledge and methods of controlling the hypertension risk factors for community people, and promote the community people to master the hypertension prevention and treatment knowledge, change the attitude and form good behavior;
4. Establish hypertensive management information system, conduct evaluation to hypertensive condition and classification of risk factors, and determine key management objects (divided into three groups, namely, key group, improved group and stable group) and the follow-up visit management of the general management objects. By then end of 2011, the hypertensive managed by Bansongyuan Community Health Service Center were 6, 120 people, including key management objects of 4, 985 people (2, 646 people for key group, 2, 114 people for improved group and

<p>225 people for stable group), and general management objects of 1, 135 people.</p> <p>5. Individual intervention: conduct follow-up visit by groups, provide outpatient service and visiting follow-up visit, detect blood pressure, know the subjective symptoms and the drug and non-drug treatment and execution of the patients, issue healthy prescriptions and conduct health education;</p> <p>6. Group intervention: the Community Health Service Center makes use of various channels (such as health education gallery, special column, blackboard newspaper and broadcast) to widely publicize hypertension prevention and treatment knowledge in all community people, actively participates in National Hypertension Day and the publicity week activity of cardiovascular and cerebrovascular disease prevention and treatment, organizes activities of various forms and rich content in combination with publicity theme, and guides the society to pay attention to the hypertension prevention and treatment.</p> <p>Effect:</p> <p>The statistics data of 2009-2010 hypertension level III management showed that the rate of follow-up visit of hypertensive reaches over 99% and control rate reached over 84%, with steady improvement each year.</p> <p>3.1.4 Hehuachi Kindergarten “One-day Activity Safety Work” Program</p> <p>Background:</p> <p>Shanghai Hehuachi Kindergarten, founded in 1958, is the model kindergarten in Shanghai. At present, it has a total of twelve classes, that is, four top classes, four middle classes and four primary classes, and has 60 faculty and staff. Kindergarten is the health care, cultivation and education institution for the living and learning of infants and children, and also the place where infant accidental injury accidents easily and frequently happen, including the most common children accidental injury such as missing, foreign matter entering the mouth, falling and injury and bumps.</p> <p>Intervention target:</p> <p>Carry out kindergarten “one-day activity safety work” to effectively reduce and avoid the occurrence of fall damage, bumps, foreign matter entering the mouth and other injury accidents of children.</p> <p>Intervention Measures:</p> <p>Organize teaching and administrative staff to learn <i>Key Points of Implementation of Hehuachi Kindergarten One-day Activity Safety Work</i>, to make teachers and child-care workers familiar with various concerns on children during one-day activity, master first aid for children injury and choke, and let the children be familiar with the methods of protecting themselves by means of children’s songs, stories and live-action demonstration to reduce the occurrence of injury accidents:</p> <ol style="list-style-type: none"> 1. Game activity: pay attention to spatial density of game area in role play, pay attention to the layout of tables and chairs and the display of tools, teach children manners, and avoid quarrels. The toys must be sterilized regularly. 2. Life activity: the ground is laid with anti-skidding floor tiles and non-slip mat in rainy and humid days. Increase the safety signs that children can read and understand in obvious places. Guide the children to wash up orderly and in groups, guide the children to save water and not to play with 	
--	--

<p>water, and teach children the right toilet method.</p> <p>3. Outdoor activity: design the appropriate rhythmic gymnastics for morning and afternoon exercises, pay attention to the distance among children queue and avoid collision; concern about the physical condition of children, do warm-up exercise, ensure the safety of place of equipment, and ensure that the children do not be out of sight of teachers during activities and avoid accidents;</p> <p>4. Learning activity: pay attention to the cleanliness of activity equipment and tools in art designing class and pay attention to the use and placement of scissors or blades; pay attention to spatial distribution in music class to prevent the children from bumping; concern about the mental state of children, timely find the unstable mood; set aside time for children to prepare before class, reduce the probability of emergencies in class, distribute teaching instruments and toys in orderly manner and avoid open plunder; provide non-frangible, heat insulation, smooth containers without sharp edges and corners during operation of experimental materials; make pre-arranged planning for hiking and visits, allocate specific duties to specific people, guarantee food hygiene and ensure the dressing safety of children; have plans for parent-child activities and make parents and children prepare in advance.</p> <p>5. Small association activity: arrange child-care worker to stand guard in every landing to remind children of safe walk from the start to the end of association activity; the teachers check the safety of the site and tools before activity, and organize the related tools after the activity and lead the children back to their respective classes in an orderly manner.</p> <p>Effect: By carrying out “one-day activity safety work”, there is no children injury accident in the kindergarten.</p> <p>3.1.5 “Three-Level Intervention” Psychological health Education Program of Datong High School</p> <p>Background: Datong High School, established in 1912, is one of the first experimental and demonstration schools in Shanghai city and a famous school both at home and abroad with a history of nearly one hundred year. At present, it has 1, 217 students, 25 classes and 141 faculty members. The contemporary students are faced with multiple stresses such as the adaptation for new students, exam anxiety, school phobia, high school entrance examination and college entrance examination, so they are easy to produce depression and suicidal tendency. Therefore, strengthening the psychological health education of students has become an important part of school education.</p> <p>Intervention target: Penetrate psychological health education in classroom, in teaching and research, in campus activities, in family life and in network technology so that the psychological health education in schools gradually become standardized and scientific, and pays more attention to diversity, effectiveness and innovation to truly achieve the purpose of psychological health education.</p> <p>Intervention Measures: Level I, Developmental School Psychological health Education</p>	
--	--

<p>(I) Subject teaching:</p> <ol style="list-style-type: none"> 1. Set up compulsory courses for psychological navigation. Self-designed teaching materials, one class every two weeks, lasting for one semester. For all students, with content covering adaptation, learning, methods, interpersonal skills, etc. during entrance; 2. Set up elective courses for psychology. Set up psychological expanding class <i>Happiness Class – Positive Psychological Experience Learning</i> in Senior Grade One, and set up psychological expanding class <i>Movies and Psychological Life</i> in Senior Grade Two. <p>(II) Psychological association activity: once every two weeks, guided by psychological teachers, free enrollment for association members. The activity includes psychological development training, seminars, training, reading guide to psychological movie, self-designed and self-directed psychodrama and psychological subject research. Regularly develop association journals, and deliver one copy to each class.</p> <p>(III) Annual “Psychological Week” activity: them of 2009 psychological week: if you love (emotional puzzle of senior high school students); theme of 2010 psychological week: our happiness (“happiness” of city life).</p> <p>(IV) Set up psychological programs through school radio station at Wednesday noon.</p> <p>Level II, Preventive School Psychological health Education</p> <p>(I) Psychological guidance to individual students</p> <p>For the psychological problems of some students such as weariness, exam anxiety, behavior deviation and school inadaptation, open Psychological Counseling Room at noon from Monday to Friday and after school to provide individual guidance. By means of one-to-one communication, listen to the emotional experience of students and produce common feelings; provide sand table treatment equipment, assist in the analysis of their characteristics of personality, cognitive style and acting style, and give proper share in the methods to resolve their developmental psychological problems that may occur in senior high school.</p> <p>(II) Provide psychological training to class advisers so that they can follow the law of psychological development of students in education and teaching process. Set up a psychological guidance seminar every semester to introduce some communication ways and means for the communication between students and teachers from the point of view of psychology, such as Interpersonal Communication PAC Rules, to help our teachers to promote the harmonies relations between teachers and students and build warm classrooms; we also tell the teachers about the causes and processing methods of psychological crisis to form a plan.</p> <p>(III) Establish the communication channels for family and school psychological education. <i>Parent Post</i> made once a semester and seminar between parents and schools guides and helps the parents to establish correct view of education, improve the family environment, influence and educate their children in harmonious atmosphere with good behavior and right way.</p> <p>(IV) Assist students in carrying out group guidance and completing psychological subject research. The subject Intervention Research on Art Therapy on Stress Relief of Middle School Students cooperated by three students conducted group guidance of psychological intervention to the students with some extent of stress level respectively from three ways, namely, music relaxation, dance creation and yoga relaxation. They collected</p>	
--	--

data, analyzed results and wrote the paper. The subject won the first prize of Intel Shanghai Adolescents Science & Technology Innovation Fair.

Level III, Treatment Psychological Evaluation and Correction

For very few students with serious mental illness, such as mood or personality disorders, learning disabilities and mental illness, timely identify and transfer to medical psychological diagnosis and treatment department to know the diagnostic process and results of students. After the students return to school for learning, keep in touch with class advisers, to regularly know recent situation of students and achieve the follow-up care and guidance.

Effect:

The popularization of psychological health knowledge among teachers and students enables early identification of the psychological problems of students, and timely intervention. So far, there is no injury accident.

Case statistical results show that there are 15 counseling cases handled on average each month. The students of Senior Grade 3 mainly have the stress and emotional problems brought by important examinations and the problems in learning bottleneck period, while the students of Senior Grade 1 are mainly the inadaptation display after entering senior high school for some time.

Counseling records statistics: for visitors, academic stress accounts for one third, interpersonal communication and emotional puzzle accounts for one third, and sandplay analysis accounts for one third. Every years, one or two student(s) has (have) serious psychological disorder.

3.1.6 Elderly Fall Prevention Program

Background:

According to the statistics of 2006 – 2011, there were total 158 cases of elderly falling injury accidents in community, accounting for 65.8% of the total injury accidents, mainly occurring in the home of residents, roads and public facilities of place of residence and other places, with main causes of injury of uneven ground, no handrail support in falling and walking with unsteady steps, etc.

Intervention target:

Identify and eliminate the potential safety hazards for the elderly in the community, and conduct fall prevention intervention in the aspects such as unsafe factors in the environment and the body functions of the elderly.

Intervention Measures:

1. Install handrails. From 2007 to now, the sub-district office has invested more than 600, 000 Yuan to install front gate step handrails and stair handles of residential building in some residential quarters of the community for more than 8, 000 meters, and install stainless steel handles in rest rooms of 725 elderly families, thus improving the living environment of the elderly and preventing injury accidents.
2. Lay slopes. Carry out the transformation to barrier-free facilities in some residential buildings within the community, and lay nearly 40 slopes.
3. Repair roads. For the problem that uneven and cracking roads in some residential areas are likely to cause falls of the elderly, the Program team together with subdistrict real estate office, residential area property office and property committee repairs roads in 25 places of the residential areas.

4. Safety publicity. Strengthen the publicity of safety knowledge, send safety notice to the elderly, make blackboard newspaper and publicity column in residential areas, help the elderly to know the common sense of prevention injury, and enhance the self-protection awareness of the elderly. Hold safety talks for the elderly for more than 60 times, with thousands of the elderly benefited, and mainly relating to fall prevention, electricity utilization safety, fire safety and other aspects

5. Fitness team. Various residential areas organize the elderly to conduct rehabilitation exercises, and learn to play “Taijiquan (a kind of traditional Chinese shadow boxing)” and “Medical Health Exercises”. More than 20 fitness teams are established in total, and more than 650 old people participate.

Effect:

There were 12 cases of fall injury for the elderly injury accidents in 2011, decreased by 73.3% compared with 45 cases in 2006. However, there were still elderly fall injury accidents, so the Program team shall continue to promote handrail Program and transformation of barrier-free facilities in residential areas, continue to carry out the identification and elimination of potential safety hazards in residential areas, and timely repair the cracking and uneven roads.

3.1.7 Other Programs

Program Name	Implementati on Units	Cooperative Units	Planned Measures	Target Population or Place	Duration	Effect Evaluation
Standard Pet Management Program	Huangpu Xinyuan Neighborhood Committee	Huangpu Xinyuan Property Management Department	Establishment of pet club and advocate civilized dog rising. Pull the rope when taking the dog for a walk, take the cargo lift when taking dog to go upstairs and downstairs, and supervise dog raising with certificate	People raising pets in residential areas	Since 2007	No accidents of pet hurting people in residential areas, good atmosphere for civilized pets raising
Safety Supervision of Special Operation Personnel and Special Equipment	Sub-district Safety Supervision Department	District Safety Supervision Bureau, District Technical Supervision Bureau and related	Safety training and working with certificate for special operation personnel, regular maintenance of special equipment, and sound enterprise management system	171 enterprises using special equipment in the community, enterprise and 125 special operation personnel	2006 to now	All 171 enterprises have developed relevant safety management system, the perfectness of 830 special devices reaches 100%, and the rate of working with certificate for special operation personnel

	enterprises in community			reaches 96% (five people are handling the procedures)	
<h3>3.2 Prevention Program for High-Risk Environment</h3> <h4>3.2.1 Catering Enterprises Kitchen Safety Program</h4> <p>Background: The safety accidents are likely to happen in kitchens of hotels, restaurants and other catering enterprises due to reasons such as cooking fumes, high temperature, tools and slippery floor in the kitchens. At present, there are 74 catering enterprises in community, and there are bigger potential safety hazards due to poor management basis and more migrant workers.</p> <p>Intervention target: Takes the kitchen of catering division in Huijinglou Hotel as important intervention point to gradually promote the kitchen safety intervention Program of various catering enterprises. Carry out safety intervention from the aspects of improvement of kitchen temperature and standardizing the use of tools, to improve the safety factor of kitchen which is high-risk environment and reduce the incidence of accidents.</p> <p>Intervention Measures:</p> <ol style="list-style-type: none"> 1. Directed at the potential hazards that the kitchen floor is slippery and easy to fall, change to use the high-quality anti-skidding floor tiles to lay the ground; 2. In order to reduce the temperature in the kitchen and improve the working environment, the new air supply device is renewed and air conditioner is installed to make the temperature in the kitchen reduce to about 30°C from 50°C; 3. Affix the eye-catching warning signs beside the mechanical equipment in the kitchen; 4. Install protective cover for the old type blender (dough mixer) 5. The knife handle shall not exceed the chopping block surface during placement of tools. Carry out on-rack locking and unified preservation for tools; <p>Effect: The safety awareness of employees is enhanced, and there are no safety accidents for kitchens of various catering enterprises.</p> <h4>3.2.2 Xietu East Road Separation Fence Program</h4> <p>Background: There are concentrated stores along Xietu East Road and seven major large footwear wholesale markets. There is no space for parking to load and unload goods around the market. The cases such as pedestrians jaywalking, non-motor vehicles driving by violation of traffic rules and arbitrary stopping of motor vehicles are serious. One person died in traffic injury due to pedestrians jaywalking in 2009.</p>					
<p>Are the descriptions sufficient? <input checked="" type="checkbox"/> YES <input type="checkbox"/> no If no what is missing</p> <p>Well laid out and good description of background, intervention target, interventions/ measures and effects.</p> <p>High risk environments identified include: Commercial kitchen safety, safety in public parks and sports safety.</p> <p>In additional a table details information on two further programs.</p>					

<p>Intervention target: Increase motor vehicles and non-motor vehicles isolation lines, optimize road signs and marked lines, and continuously improve the traffic safety condition.</p>	
<p>Intervention Measures:</p> <ol style="list-style-type: none"> 1. It is designed to install central road separation fence along Xiету East Road and motor vehicles and non-motor vehicles isolation lines in both sides for 5, 000 meters, to solve the problem of mixing of motor vehicles, non-motor vehicles and pedestrians; 2. Increase parking lot for non-motor vehicles along Xiету East Road for about 1500 meters to solve the problems of parking of non-motor vehicles; 3. Optimize two road signs and marked lines and guide standard running; 4. Organize traffic safety volunteers to be on duty for free at important road junctions along Xiету East Road, promote safety traffic and dissuade uncivilized traffic behavior. 	
<p>Effect: After the isolation lines of the road section are set up, no one has died in traffic accidents for two consecutive years, jaywalking and riding in violating traffic rules have been effectively controlled and traffic order has been effectively improved.</p>	
<p>3.2.3 Safety Park Program</p> <p>Background: Penglai Park is the only comprehensive public garden open to public free of charge in Bansongyuanlu communities, covering an area of 3.5 hectares, with 37 group exercise teams conducting activities and more than 5000 average daily visitors throughout the year. It is an important place of fitness, leisure and entertainment for the residents in community.</p>	
<p>Intervention target: Strengthen park safety management and allocate specific duties to specific people; improve the safety management system and develop emergency plans for various emergencies; enhance staff training and the safety standard service awareness; actively promote park visits in a civilized manner and create safety park without accidents or injury.</p>	
<p>Intervention Measures:</p> <ol style="list-style-type: none"> 1. Establish park safety management committee of cross-border cooperation and perfect park safety management network. 2. Identify and eliminate potential hazards of facilities and equipment in the park: the cast iron street lamp base is changed to use aluminum alloy material; deeply bury the triangolo fixing steel wire ropes for processing; use nylon mesh to cover the cobblestones laid under the trees; increase anti-skidding carpet to the places easy to slip; separation fence in greenbelt is changed to safety bamboo fence; lay cushion under “scaling ladder”; plant radix ophiopogonis in the side of block retaining wall; lock the bucket supplying water to visitors and change to “Shuiguanjia” for water supply; and provide special charger in staff’s parking shed. 	

3. Implement the working method of “accomplishing at a time”, strengthen park safety inspections, take the methods of accomplishing in sections, and conduct inspections with fixed people in fixed place at fixed time;
4. Strengthen the intervention on uncivilized park visiting behavior: set up warning signs in park; the park employs security personnel for inspection, and inspect every half an hour or fifteen minutes in case of peak period; stop skating, kicking the ball, playing with water, climbing trees and other behavior;
5. Participation of volunteers: be responsible for the self-management of group exercise team, including the coordination of place and time; assist the park manager in security patrol; provide voluntary services such as health counseling;
6. Perfect emergency measures; develop relevant emergency plans and establish staff voluntary emergency rescue teams.
7. Safety intervention of different groups of people: install toilet pager for the elderly to prevent accidents; the underage children must be accompanied by guardians to visit park; special visitors such as intoxicated person must be accompanied; people gathering for affray and looking for fighting shall timely contact with the regional public security management department.

Effect:

1. The park equipment perfectness is improved, for example, the fitness equipment perfectness reaches 98%, and the park road leveling rate reaches 98%. The obvious potential hazards for visitors are reduced;
2. The accidents and injuries are reduced, and there is no case of injury accident since 2008;

Statistical Table for 2006-2011 Injury Accidents in Penglai Park

Type of Injury	Year of 2006	Year of 2007	Year of 2008	Year of 2009	Year of 2010	Year of 2011
Fall	3	1	0	0	0	0
Movement	1	0	0	0	0	0
Falling into Water	0	0	0	0	0	0

3. Strictly implement “accomplishing at a time” safe operation procedures for operation standard of employees in park, to basically eliminate the potential safety hazards caused by operation against rules;
4. The phenomena such as playing with water, hanging the trees, riding a bike by visitors in general were reduced by more than 80% compared with that in 2009.

3.2.4 Sports Safety Program

Background:

There are one fitness court and 49 fitness sites in the district, and a total of 279 pieces of fitness equipment distributed in 22 residential areas, streets and squares. According to incomplete statistics, the number of use of various fitness equipment in 2009-2011 is about 360, 000. Learn from the accidents occurred in fitness court (site) of other communities, and advocate the fitness philosophy in a scientific and safe manner.

Intervention target:

Combine with the evaluation of public sports facilities in community, and strengthen the normal management of routine maintenance and repair of fitness equipment; give play to social sports instructors and volunteer to provide the usual common sense of fitness and the publicity and teaching of the philosophy of fitness in a scientific way to fitness people, enhance the safety awareness of fitness people, and further improve the standardized management of management, maintenance and use of the public sports facilities in community.

Intervention Measures:

1. Ensure smooth traffic during selection of the site for setting and installation equipment. Do not affect the implementation of various first aid measures; appropriately allocation the equipment types.
2. According to the years of installation and use, the municipal fitness equipment company renews the equipment of various fitness courts once every three years.
3. Establish a volunteer team for management and supervision of the community public sports facilities jointly participated by community sports instructors and fitness enthusiasts (volunteers), publicize and guide the community residents for fitness in a safe and scientific way, participate in social insurance for social public sports facilities so that the body builders can obtain fitness safety guarantee.
4. Inspect the fitness court once every three days and make inspection records. In case of equipment damage or failure, immediately hang the boards to prevent body builders from stopping use of the equipment and timely report the maintenance department of the municipal fitness equipment company for guarantee repair. Please timely repair as soon as possible to ensure the intactness and normal use of equipment.
5. Optimize and improve the environment of fitness court (site), and prevent residents. It is not allowed to hang up clothes and quilts on equipment. Orderly manage the parking of vehicles around the vehicles and clean the fitness court and sites for good sanitation.
6. Conduct annual evaluation and evaluation to community public sports facilities once a year.

Effect:

The survey on satisfaction of use and management of public sports facilities in community has shown that various intervention measures have obtained results to some extent, and that the mass satisfaction reached more than 95%. There are no injury accidents.

E.3.2.5 Other Programs

Program Name	Implementation Units	Cooperative Units	Planned Measures	Target People or Place	Duration	Effect Evaluation
Lujiazhang Road and Kualong	No. 7 Detachment of	Sub-district Urban Management	The vehicles driving from east to west in Lujiazhang Road turn to left driveway	Students and teachers of Shanghai No. 8 Senior High School and other	Year of 2009-2010	The pedestrians crossing the street and motor

Road Junction Left Driveway Improvement Program	Traffic Police	Division	to retract backward for six meters, to avoid the pedestrians street crossing and meanwhile prevent large motor vehicles from turning around	pedestrians	vehicles making a turn are effectively separated, and they do not interfere the other. The safety factor is greatly improved.	
---	----------------	----------	---	-------------	---	--

Section F: Programs that are based on the available evidence

<p>4.1 The evidence-based programs in Indicator 2 and 3.</p> <p>1. The “three-level intervention” psychological health intervention program of Datong High School takes <i>Clinical Psychology – Knowledge of Psychological health and Assistance</i> (Shanghai Education Publishing House) by Professor Xu Guangxing as evidence basis, of which the intervention results are proven effective.</p> <p>2. The community early stroke rehabilitation intervention program takes (1) <i>Study Development on Cardiovascular Disease</i> (Beijing Medical University Press) by Hu Yonghua and Li Liming, (2) the 2002 report <i>Diet, Physical Activity and Health</i> by WHO Secretariat and (3) <i>Avoiding Coronary Artery Heart Disease Attack and Stroke</i> issued by WHO in 2006 as evidence basis, of which the intervention results are proven effective.</p> <p>3. Hypertension three-level management program takes <i>Hypertension Guideline</i> developed by Ministry of Health as evidence basis, of which the intervention results are proven effective.</p>						<p>Are the descriptions sufficient? ✓ YES</p> <p>Certifiers explored at the site visit how all programs are based on available evidence e.g. within school safety they adhere to the regulations set by the Education Department - Safety section; when designing parks they adhere to the principals of injury and crime prevention thorough safer design. The elderly resident facility and day care provided numerous</p>
--	--	--	--	--	--	---

<p>4.2 Has any contacts been established with ASCSCs, WHO CCCSP, other scientific institutions, or knowledgeable organizations about the development and/or implementation of evidence-based strategies? Which ones? What has been the extent of their counsel?</p> <p>1. During the process of carrying out “three-level intervention” psychological health intervention program, Datong High School During establishes working relation with Department of Psychology, East China Normal University, and the provided evidence is adopted and used by Datong High School.</p> <p>2. During the process of carrying out community early stroke rehabilitation intervention and hypertension three-level management Program, Community Health Service Center successively establishes cooperative relationship with Municipal and District Center for Disease Control and Prevention and Pfizer Pharmaceuticals Ltd. (China), and the partner provides evidence basis and intervention results of the Program and guides the community to carry out Programs.</p>	<p>examples of relevant evidence-based programs.</p> <p>Are the descriptions sufficient? <input checked="" type="checkbox"/> YES</p> <p>Site visit explored how community interacts with ASCSC, and relevant government departments. Certifiers note that information is also provided in section 7.4 of this application.</p>
<p>Section G: Programs that document the frequency and causes of injuries</p> <p>5.1 Local data is used to determine the injury prevention strategies</p> <p>1. Injury surveillance sites of various neighborhood committees – community resident accident and injury in respective districts</p> <p>2. Traffic Police Detachment of Huangpu District – traffic accident and injury</p> <p>3. Sub-district Safety Supervision Department – workplace accident and injury</p> <p>4. Penglai Park – accident and injury in public places (park)</p> <p>5. Fire Brigade of Huangpu District – community fire accident and injury</p> <p>6. Home Affairs Branch and various neighborhood committees – community elderly accident and injury</p> <p>7. Various neighborhood committees and social and cultural department – sports accident and injury</p> <p>8. Primary and Secondary School Education Department District Education Bureau – primary and secondary school students’ accident and injury</p> <p>9. Various neighborhood committees and sub-district Disabled Persons’ Federation – accident and injury of the disabled in community</p> <p>10. Local Police Station and Comprehensive Management Department – social security accident and injury</p> <p>11. Huangpu Office of Shanghai Gas (Group) Co., Ltd. and various neighborhood committees – gas accident and injury of residents</p> <p>12. District Center for Disease Control and Prevention and Control and Community Health Service Center – treatment accident of community residents and injury statistics and analysis</p>	<p>Are the descriptions sufficient? <input checked="" type="checkbox"/> YES</p> <p><input type="checkbox"/> no If no what is missing</p> <p>Comprehensive list of data sources.</p>

<p>5.2 How data are presented in order to promote safety and prevent injuries in the community.</p> <ol style="list-style-type: none"> 1. Injury surveillance sites of various neighborhood committees collect, register, gather and report injury information to Community Health Service Center; 2. After collecting, registering and gathering injury information, the traffic department , fire control unit, schools and other units shall report sub-district establishment leading group, and then report to District Center for Disease Control and Prevention after gathering and analysis; 3. The section for outpatients, protection department and other departments of the Community Health Service Center shall collect the relevant information and report to District Center for Disease Control and Prevention after research and gathering; 4. The District Center for Disease Control and Prevention shall issue <i>Community Diagnosis Report</i> in accordance with accident and injury data analysis to provide intervention basis for the establishment of safe community. 5. Regularly deliver accident and injury information to the relevant personnel, report safety production to enterprises and public institutions each month, report community accidents and injury information to various schools by holding regular meetings in the surroundings each month, report community fire control accidents and injury information through community fire joint conference, and put up “Monthly Report of Traffic Accidents” on the bulletin boards of various communities. 	<p>Are the descriptions sufficient? <input checked="" type="checkbox"/> YES Dissemination of information appears to be comprehensive. Certifiers noted that injury data for traffic, elderly, gas and fire is included under section D and that further information is also provided under A4. Certifiers reviewed 5.2 in conjunction with A4 and section D.</p>
<p>5.3 The community documents and uses knowledge about causes of injuries, groups at risk and risky environments.</p> <p>After filling in Registration Form for Shanghai Injury surveillance Personnel, the Community Health Service Center and various functional departments shall report to District Center for Disease Control and Prevention for unified preservation with period of not less than five years.</p> <p>The District Center for Disease Control and Prevention shall conduct research and analysis each quarter to the data information reported by the Community Health Service Center and Safe Community Establishment Leading Group, and the obtained community injury evaluation report shall be fed back to the Community Health Service Center, Safe Community Establishment Leading Group and related sub-district Program teams to adjust programs and program measures and develop the continuous improvement program.</p>	<p>Are the descriptions sufficient? <input checked="" type="checkbox"/> YES <input type="checkbox"/> no If no what is missing Adequate description.</p>
<p>Section H: Evaluation measures to assess their programs, processes and the effects of change</p>	
<p>6.1 How does your community analyze results from the injury data to track trends and results from the programs?</p> <p>6.1.1 Evaluation of Safety Promotion Program, Implementation Process and Effect</p>	
	<p>Are the descriptions sufficient?</p>

<p>For example, by means of site visit, discussion exchanges the program implementation, etc., evaluate the condition of Datong High School, Penglai Park, Sub-district Nursing Home and others in promotion Programs for safe community establishment in the implementation process and effect, and put forward suggestions for continuous improvement.</p>	<p>✓ YES <input type="checkbox"/> no If no what is missing Very good descriptions provided. Certifiers note that further information of relevance for evaluation was included under B10.</p>
<p>6.1.2 Injury and Hazard Inspection, Rectification and Evaluation For example, reflect that large vehicles turning round may lead to potential safety hazards for the normal pedestrians crossing the road in Lujiabang Road and at Ktalong Road junction for relatively concentrated community units and community residents. The traffic safety promotion Program team organizes the members to conduct on-site inspection of hidden dangers for many times, put forward and implement the improvement measures for junction traffic facilities according to the actual condition. The evaluation results after the implementation of measures show that the pedestrians crossing the road and the vehicles turning round are effectively separated without interfering the other, and that the safety factor for pedestrians crossing the road is greatly improved.</p>	
<p>6.1.3 Annual Evaluation At the end of each year, various community units, various sub-district departments and all neighborhood committees shall conduct self-evaluation in accordance with the working plan and objectives developed at the beginning of the year. At the same time, community safety construction leading group shall hold a promotion meeting for safe community establishment every year, to evaluate the general work of safe community and various safety promotion Programs and put forward improvement requirements.</p>	
<p>6.1.4 Injury Evaluation The Huangpu District Center for Disease Control and Prevention shall conduct analysis and systematic evaluation to the medical injury surveillance results collected and reported by the Community Health Service Center.</p>	
<p>6.1.5 Evaluation of Accident Monitoring Results of Government Functional Departments The Sub-district Economic Department (Safety Supervision Department), City Management Department and Comprehensive Management Department and other functional departments shall organize the District Fire Supervision Office and regional police station and other professionals to assess the rectification process and rectification results of accidents related to safety production, traffic and fire fighting and existing hidden dangers in community.</p>	
<p>6.1.6 Evaluation of high risks group and environment Various safety promotion Program teams during the process of continuous improvement will respectively assess the high risks group and environment related to the Program. The main evaluation methods are sampling visiting for face-to-face communication, holding symposiums and setting up suggestion boxes in various neighborhood committees and sub-district community residents' reception center, etc. For example, in June 2009, Urban Disaster Prevention and Safety Technology Institute of Shanghai Institute of Applied Science and Technology uses the method of qualitative and quantitative analysis to list "security tree" in the workplace to conduct detailed evaluation.</p>	

<p>6.2 The results from the program evaluations are used</p> <ol style="list-style-type: none"> 1. Perfect the cross-border organization composition. For example, the elderly safety promotion program absorbs the joining of community elderly association, and children safety promotion Program absorbs the participation of community police; 2. Broaden the Program coverage. For example, the school safety Program through the platform of the local schools extends to other school from Datong High School, reaching full coverage; 3. Continuous improvement intervention measures. For example, the extensive development of safety promotion Program enhances the safety awareness of the public, the safety Program and intervention measures are extended to the students' dormitory safety management, fire escape drill of high-rise residential buildings of residents, continuous improvement of protective pads of sports facilities and rounding treatment of the acute angle of basin in toilet by nursing home, etc. 	<p>Are the descriptions sufficient?</p> <p><input checked="" type="checkbox"/> YES</p> <p><input type="checkbox"/> no If no what is missing</p> <p>Good to see continuous improvement applied.</p>
<p>6.3 The changes in pattern of injuries, attitudes, behavior and knowledge of the risks for injuries as a result of the programs.</p> <p>The evaluation results of safety promotion program, implementation process and effect refer to the description of various Programs in Guideline 2, Guideline 3.</p> <p>Through continuous establishment of safe communities, there is a significant decline in community safety accidents and injuries, and greater improvement in rate of community residents' awareness of and participation in safe community establishment. From 2009 to 2011, the total community traffic accidents reduced from 4599 cases to 3138 cases with a decrease of 31.77%; the injury accidents in schools reduced from 6 cases to 3 cases with a decrease of 50%, and the death caused by injury maintained zero; zero injury accident was maintained in Penglai Park; zero injury accident was maintained in workplace; the sports facilities in "fitness court" of residential areas were well maintained and there was no injury accident; for family fire safety, the fire accidents reduced from 24 cases to 16 cases with a decrease of 33.33%; and for the elderly safety, the injury accidents reduced from 44 cases to 21 cases with a decrease of 52.3%.</p> <p>Through random questionnaire survey, conduct survey on awareness rate, satisfaction and participation rate of community residents. 500 questionnaires were distributed, with survey rate of 0.56%, and 460 valid questionnaires were returned with return rate of 92%. The survey result show that the results of knowing some work of safe community, occasional participation and relatively satisfactory respectively reached 98%, 97.8% and 92.8%.</p>	<p>Are the descriptions sufficient?</p> <p><input checked="" type="checkbox"/> YES</p> <p><input type="checkbox"/> no If no what is missing</p> <p>Good analysis. Good to see trending down in statistics.</p> <p>Decreases in injury burden is impressive.</p>
<p>Section I, Ongoing participation in national and international Safe Communities networks.</p>	
<p>7.1 Describe how the community has joined in and collaborates in national and international safe community networks.</p> <p>In November 2009, Bansongyuanlu Sub-district was nominated as National Safe Community by State Administration of Work Safety and COSHA</p>	<p>Are the descriptions sufficient?</p> <p><input checked="" type="checkbox"/> YES</p>
<p>7.2 Will the designation ceremony coincide with any international conference, seminar or other forms of international or national exchange?</p>	<p>Are the descriptions sufficient?</p>

This is to be discussed and decided by COSHA.

		✓ YES Designation ceremony to coincide with national SC meeting - 22/11/2012.
		Are the descriptions sufficient? ✓ YES COSHA – has advised that a large number of designated ISC will attend.
7.3 Which already designated Safe Communities will be invited for the designation ceremony?		
This is to be discussed and decided by COSHA.		
		Are the descriptions sufficient? ✓ YES <input type="checkbox"/> no If no what is missing Good involvement in regional and national networks.
Time	Meeting	
December 13, 2007	Participating in the mobilization meeting of Huangpu District for establishment of International Safe Community	
December 18, 2007	Participating in naming ceremony of WHO Safe Communication and Safe Community Seminar in Shanghai	
November 5 - 7, 2008	Participating in working conference for national safe community establishment held in Qingdao of China	
October 18 - 20, 2009	Participating in the Fifth Asia Safe Community Meeting and Working Conference for National Safe Community held in Beijing. At the meeting, the Sub-district was named as National Safe Community by China Occupational Safety and Health Association, and made exchange speech at the meeting.	
November 17 - 19, 2010	Participating in working conference for national safe community establishment held in Chongqing	
November 22 - 24, 2011	Participating in working conference for national safe community establishment held in Beijing	
7.4 Which international conferences and national Safe Community conferences has the municipality participated in?		
7.5 In which Regional Network for Safe Communities is the community a member or planning to seek membership? (Asian, European, Pan-Pacific, African or Latin-American Regional Network for Safe Communities)		
Bansongyuanlu Sub-district is planning to join the Asian Regional Network for Safe Communities if designated.		
	Are the descriptions sufficient? ✓ YES Involvement in regional networks is important.	