



## **Southern District Safe Community**



**Name of the Community: SOUTHERN DISTRICT**

Country: CHINA

Number of inhabitants: 290,000(2006)

Programme started year: 2009

International Safe Communities Network Membership: Designation year: 2011

**For further information contact:**

Name: Mr. LEUNG Ho-kwan, MH (Vice-Chairman)

Institution: Southern District Healthy & Safe Association Limited

Address: 1/F., Ocean Court, 3 Aberdeen Praya Road, Hong Kong

City: Hong Kong                      Country: China

Phone (country code included): (852)2814 5827              Fax: (852) 2873 5261

E-mail: [sd\\_healthysafe@yahoo.com.hk](mailto:sd_healthysafe@yahoo.com.hk)

**The programme covers the following safety promotion activities:**

**For the age group**

*Children 0-14 years:*

- Community Education and Promotion Working Group – to encourage toddler participating in various safety & healthy campaigns
- Southern District Road Safety Campaigns (annual)
- Safety & Health Programmes for Children

*Youth 15-24 years:*

- Seminars of Crime prevention and Anti-drug
- “Reach the Top” Illustrious Students Scheme
- “Barrier Free And Safe Community Project”
- “Health Time Machine: Young And Old Health Tracking Programme”

*Adults 25-64 years:*

- Community Education & Promotion Working Group – to popularize safety issues to the residents, i.e. housewives
- “Southern District Fishermen Lifestyle Diagnosis Study”
- “Barrier Free And Safe Community Project”
- Women Domestic Safe Promotion Programme

*Elderly 65+ years:*

- Community Education and Promotion Working Group - to encourage safety and health screening and checking to elderly and to popularize nutrition, exercise, physical and mental health
- Services for Elderly Working Group – to provide continuous health and safety supports to elderly patients with chronic illnesses and continuous health & safety support;
- “Age Friendly Community Project” (2009-2011)
- “Health Time Machine: Young And Old Health Tracking Programme”
- “Barrier Free And Safe Community Project”
- “Smart Home Renovation Scheme”

**At the following environments:**

*Home:*

- Estate and Home Safety Working Group - to assist the residents to maintain the safe and healthy living environment
- Fire Safety Working Group - to promote the fire safety and fire precaution at home
- Promotion on against objects being thrown from height
- Fire Drill & Fire Safety Seminars
- “Safe & Healthy Estate Accreditation Scheme”

*Traffic:*

- Road Safety Working Group - to road safety and anti-drink driving programmes
- Services for Rehabilitative – to follow up recommendations on accessibility of rehabilitees
- District Facilities Safety – to follow up and take appropriate action to improve the awareness of safety to road users
- Southern District Road Safety Campaigns (annual)

*Occupational:*

- Community Education and Promotion Working Group - to popularize occupation safe on work places, including industry, typhoon shelter and Ocean Park
- Fire Safety Working Group - to promote the fire safety and fire precaution in working places
- Services for Rehabilitative Working Group - to promote the safety in the facilities for various rehabilitative hostels, care institutions and service centres
- “Residential Care Home Accreditation Scheme”

*School:*

- School Safety Working Group - to encourage schools in the district to participate in the Safe and Healthy School Programme
- “Reach the Top” illustrious students scheme since 2008
- Crime prevention and Anti-drug programmes in schools

*Sports:*

- Community Education and Promotion Working Group – concerning the safety sports and exercise, i.e. yoga, aerobic, tai-chi, stretching exercise and group dancing
- Various safe promotions on sports and swimming

*Leisure:*

- District Facilities Safety Working Group - to follow up and take appropriate action to improve the safe elements in the district facilities, including leisure facilities
- Community Education and Promotion Working Group – to popularize safe and healthy issues such as sports, lifestyle behaviours and cultural activities in the district
- Environmental protection and greening programmes

*Natural Disaster:* the consequences (human injuries) related to Natural Disaster. (example Tsunami Warning System, earthquake safe houses)

- Community Education and Promotion Working Group –To encourage safety and health screening and checking to toddlers, children, youth and elderly
- Prevention of Human Swine Influenza

*Others:*

- Community Diagnosis Working Group – provide insights & directions for forward planning in safety promotion;

**Violence prevention** (intentional injuries):









- Fight Crime Working Group - to monitor the crime problems in the district, such as drug abuse, violence, assault, triad and youth related crime
- Community Education and Promotion Working Group - To concern and popularize nutrition, exercise, physical and mental health to the residents

**Suicide prevention** (self-inflicted injuries):

- Fight Crime Working Group - To concern and popularize nutrition, exercise, physical and mental health to the residents
- “Happy and Smart Community Campaign” 2009-2010

**Programs aiming at ”High risk-groups”:**

- “Age Friendly Community Project”

Before	After Safety Improvement	
		<ul style="list-style-type: none"><li>◆ Enlarged the size of squatting close</li><li>◆ Installed handles in the public toilet</li></ul>
		<ul style="list-style-type: none"><li>◆ Installed handrail along the steps</li></ul>
		<ul style="list-style-type: none"><li>◆ Added reflective marking to the cement patch of large signage</li></ul>
		<ul style="list-style-type: none"><li>◆ Added reflective yellow line on the steps</li></ul>

- “Barrier Free And Safe Community Project”



- Safety Projects for high risk elders
- Home influenza control programme
- Talks and workshops of renovation safety promotion
- Promotion of road safety
- Fire Drill & Fire Safety Seminars
- Anti-drug and crime prevention programmes
- Elderly sports safety programmes

**Surveillance of injuries:**

Domestic (~38%); Industrial (~16%); Sports (~8%); Traffic (~7%)

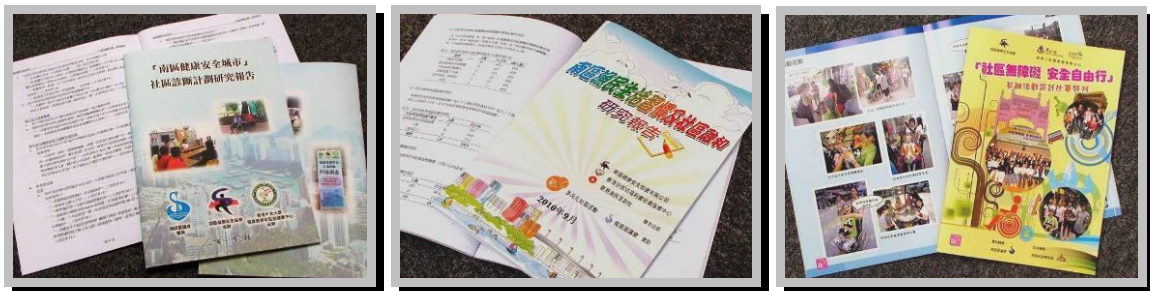
Numbers per year: ~ 13,000 p.a.

Population base: 290,000 (2006, By-census Statistics, HKSAR)

Started year: 2008

**Publications:**

1. Report of “Southern District Community Diagnosis Study “
2. Report of “Southern District Fishermen Lifestyle Diagnosis Study”
3. Report of “Barrier Free And Safe Community Project”



4. Report of “Age Friendly Community Project”
5. Report of “Health Time Machine: Young And Old Health Tracking Programme”



**Produced information materials, pamphlets:**  
 “Southern District Healthy and Safe Community” (2011)



**Staff**

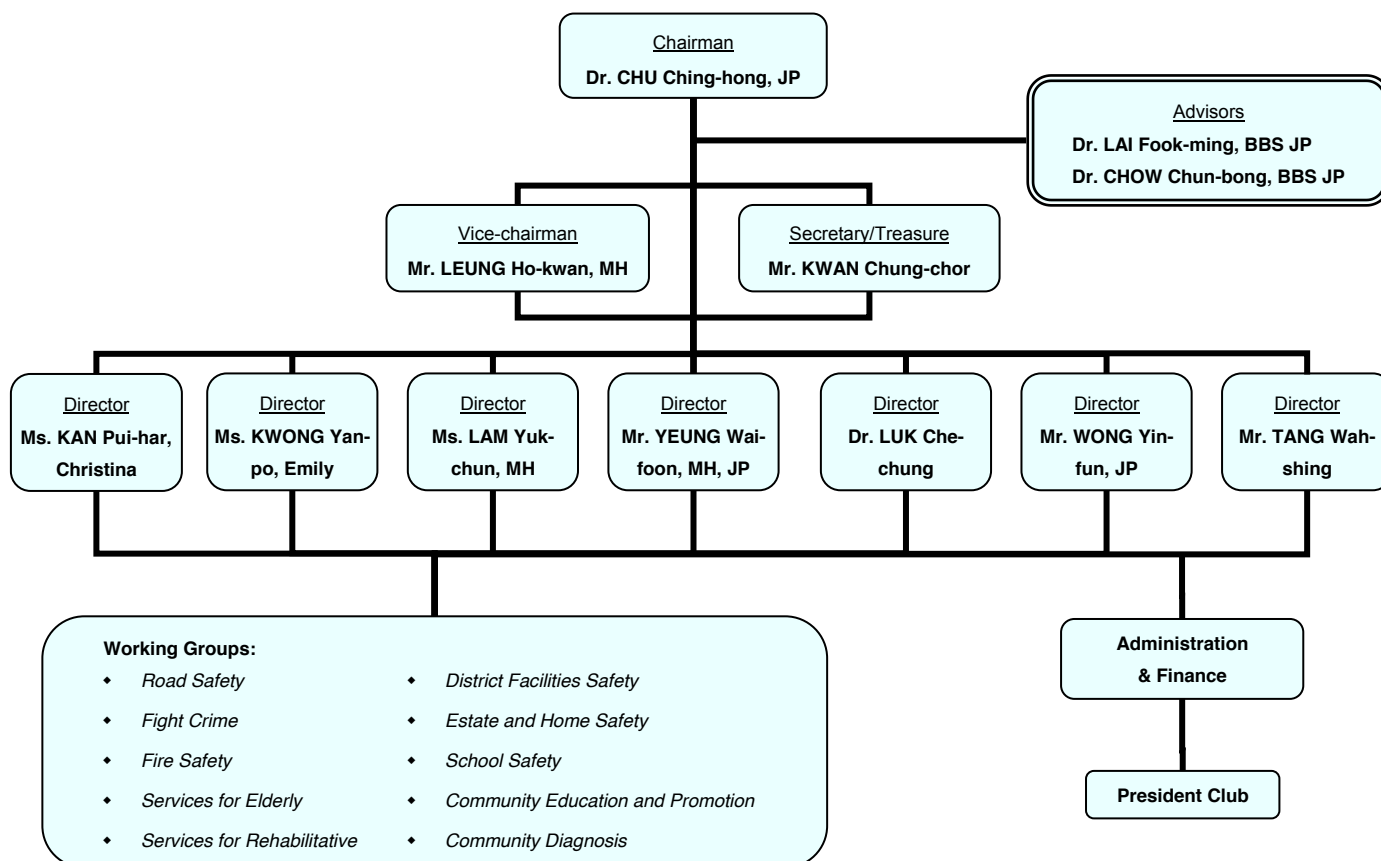


**Board of Directors**

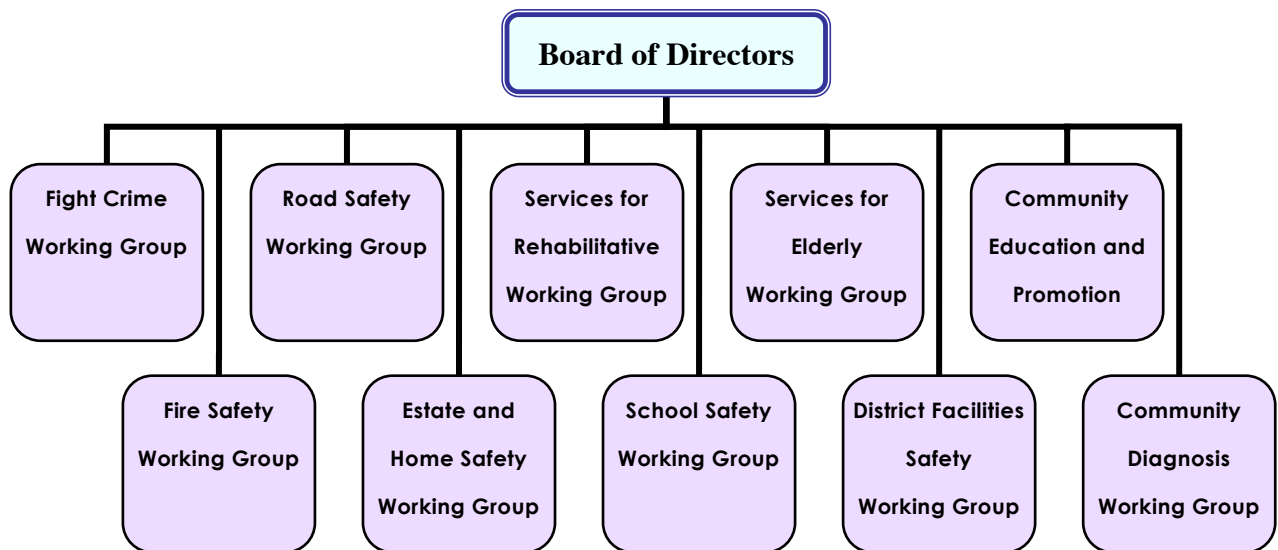
Number: 1 (Volunteer)

Professions: part-time or full-time: 3 Part-time Executives

Organization: Southern District Healthy & Safe Association Limited



## Working Groups:



### Specific intersectoral leadership group:

- Southern District Council
- Southern District Office, Home Affair Department
- Queen Mary Hospital
- Occupational Safety & Health Council
- Tung Wah Group Hospitals Jockey Club Rehabilitation Complex
- Caritas Community Centre –Aberdeen
- Aberdeen Kai-fong Welfare Association Social Service Centre

### General public safety/healthy promotion group:

- Fire Services Department
- Hong Kong Police Force
- Housing Department
- Leisure and Cultural Services Department
- Social Welfare Department
- Labour Department
- Department of Health
- Southern District Fight Crime Committee
- Southern District Fire Safety Committee
- Southern District Road Safety Campaign Committee
- Southern District Joint Schools Conference
- Hong Kong Southern District Women's Association

**International commitments:**

Study visits:

- Tuen Mun Safe Community , HKSAR
- Sai Kung Healthy & Safe City, HKSAR
- Wong Tai Sin Safe Community , HKSAR
- Tung Chung Safe Community , HKSAR
- Kwai Tsing Safe Community & Healthy City, HKSAR

Participation in Safe Community conferences:

- Hong Kong (2009-2011)

**The leader:**

Dr. CHU Ching-hong, JP  
Chairman