

Renminlu Community Safe Community Annual Report 2010

Community Name: Renminlu Safe Community

Nation: the People's Republic of China

Number of inhabitants: 27,683 people
(2010)

Programs starting time: 2006

WHO Certification Time: 2009

Date of submitting annual report: 2010.12

Contact Person who finished annual
report : Wang Tinghong

Position: Secretary of Renminlu safe
community Secretariat

Address: No. 35 of Wuwu Road, Dalian,
China

Postal code: 116001

Tel : 0411 -82,799,039

Fax : 0411 -82,799,033

E-mail: rmlwth@163.com



The general situation of Renminlu Community

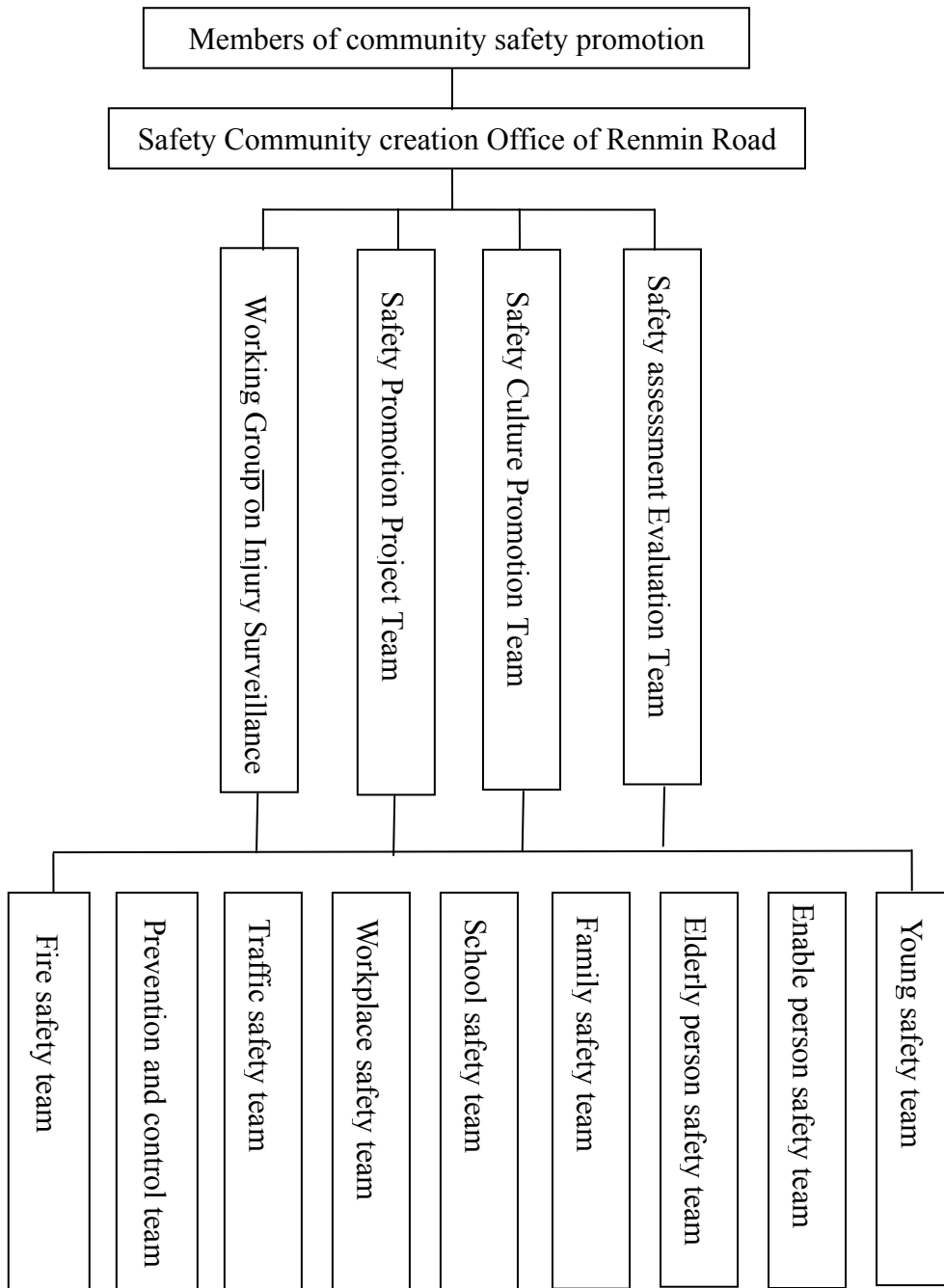
Renminlu Community is located in the east of Dalian with an area of about 3.2 square kilometers and the demographic characteristics of 27,683 people. As a historic commercial port which developed fast along with modern economy, Renminlu community was formed as a CBD comprehensive modern central business district with a set of finance, trade, port and shipping services, tourism and industry, foreign institutions and so on.

Convenient traffic, abundant information, instant communications, high office facilities and good quality financial and business operating environment are all existed in Renminlu. And in the area of community, there are a lot of banks domestic and foreign, all kinds of headquarters and offices about insurance, securities and other financial services. The 50 commercial buildings lined up along the main road on both sides with the total construction area of 2,200 thousands square meters where many modern fashion leisure halls are dotted. Renminlu community is the center of business, which is also the center of functional service and tourist.

1 - Promotion Committee Members

According to "Basic requirements of construction of national security community" Renminlu community restructuring the the framework, changed the function of management, set up several working

team, led the construction of security community to a scientific track with unified standardized.



2 – The constitution of Promotion Working Group

The construction of Safe Community is a long-term and continuous improving work, the Renminlu safety community unite the promotion

working team and functional departments promotes continuous improvement and achieves a continuous improvement of Renminlu safety work of the community model.

Working team		Department in charge
Working Group on Injury Surveillance		Enterprise Service Center
Safety Promotion Project Team	Prevention and control team	Safety Supervision Office
	Fire safety team	
	Traffic safety team	
	Workplace safety team	
	Family safety team	Home Affairs Bureau
	School safety team	
	Elderly person safety team	
	Youngs safety team	
	Enable person safety team	Social security Bureau
Safety Culture Promotion Team		Office of the Party Working Committee
Safety assessment Evaluation Team		Safety Supervision Station Office

3 - Safety community development funds of Renminlu (RMB: 744,943 yuan)

No	Content	Time	Content	Fee	Account	Other
1	work	9.54	Fire extinguisher	5274.00	5274.00	
		11.39	Board	10400.00	10400.00	
2	Painting	11.39	Painting	4450.00	4450.00	
3	Post	10.68	Net work	68000.00	68000.00	
		9.32	Telephone	44931.00	44931.00	
4	Travle	10.81	Tour for Beijing	13462.00	13462.00	
5	Maintenance	9.28	Decoration	20000.00	20000.00	
		12.00	Maintenance	62300.00	62300.00	
		11.54	Decoration	38376.00	38376.00	
6	Conference	6.68	Conference	20499.00	20499.00	
7	Training	6.34	Training	20000.00	20000.00	
		6.35	Materials	10300.00	10300.00	
8	Entertainment		Entertainment	12000.00	12000.00	
9	Special materials	11.03	Emergency Package	30000.00	30000.00	
		11.39	Emergency Package	7000.00	7000.00	
		11.80	Billboards	193401.00	193401.00	
		10.68	Materials	80000.00	80000.00	
10	Work	8.17	Work	18050.00	18050.00	
		8.40	Disease Notes Search	30000.00	30000.00	
		8.40	Work	16000.00	16000.00	
		8.64	Translate	20000.00	20000.00	
		11.26	Translate	20500.00	20500.00	
			Account	744943.00	744943.00	

4 -Continuous safety promotion project

Children aged 0-14:

4-1. Renovation of school campus safety facilities

Potential danger survey had been conducted for mentally retarded school campus, and the



original old boiler had been removed and connected to city heating network. Increasing the height of 40 cm for the classroom's door handles and installed traffic safety pictures in the school playground.

4-2. The establishment of child traffic safety education platform

Simulated overpass, sidewalks and other traffic safety signs and facilities for children are set in one campus of Xinghe community. Reminder card body,



involved in road safety games, traffic lights, road vehicles and so on are scaled down which made into a real, simulated traffic scenes. There are also songs on the ground which made children know traffic signals and other traffic rules. Traffic police are also be invited into community regularly to participate in the activities and explain traffic safety knowledge.

Young people aged 15-24:

4-3. "Sunshine green channel" - pedestrians are not allowed to skew the road, walking safety of green channel plan

Renminlu safety community and the school jointly launched the "Sunshine Green Channel" - pedestrians are not



allowed to skew the road, walking safety green channel program, which is designed to improve the road safety facilities of campus and surrounding community, such as the deceleration zone, traffic lights, etc. Special persons are sent around the school to maintain traffic order during school hours sent. 3-4 hours of traffic safety education courses are conducted each semester in each grade. Students are organized during the summer vacation to set up a "small traffic police force" with eye-catching logo, to assist the teacher on duty to maintain traffic order. From time to time inviting parents to participate in school activities, traffic safety, and enhance the awareness of road safety of parents to protect children together.

4-4. Draw up preparation and control guide manual for Zhongshan campus safety accident

Four experts of construction management department from DUT were invited to make a security survey of buildings of 4 primary and secondary

schools and 1 mentally retarded school. According to the security survey for construction, the safety guide of school were worked out, and delivered the volumes of 1200. Guides include: recommended school building safety norms by the safety management system, the students recommended safety education courses throughout the year program, school safety assessment.

Adults aged 25-64:

4-5. "Department of Human Security" adult safety campaigns

For the poor knowledge of safety of using gas, electricity and so on, making full use of community's bulletin boards, community forums, training and other forms to train



the residents who concerned about the safety of gas and electricity. Emergency drills hedging activities were continual conducted including "Red Cross volunteer responder training," "House, office security," "Earthquake Disaster Mitigation lectures" and other places of education seminars and professional emergency response drills.

4-6. Construction Project of "health workplace safety" for Residents

Chosen the Plaza in Renminlu safety community as the sports fitness equipment building sites, invested 3 million yuan. Plastic floor of the school playground for the



pilot was reformed in order to reduce the injuries of students, residents from sports equipment.

Elderly population aged over 65

4-7. "Give security for the elderly" services

Considering of the aging population in the city, the elderly can not deal with security risks such as gas, electricity and so on. 10,000 yuan government subsidy was invested by the elderly project team. Professionals from gas and electricity companies are sent to community to check gas, stoves, circuits, wires, appliances, lighting circuit switches, replacing aging wires or switches. Each household was installed one combustible gas alarm free of charge. If the cost was under 100 yuan, the bill is paid entirely by the government. This year, more than 80 households completed the line transformation of the elderly.



4-8. Small personal first aid kits popularization project

For the characteristics of common chronic diseases for the elderly, accidents are often occurred when they go shopping, visiting friends and relatives, physical activity due to chronic diseases. The risk of accidents can be greatly reduced if first aid kits are promoted the use. Small "first aid kit" is as small as pocket-sized, mainly used to carry first aid drugs, such as Suxiaojiuxin Pill, and other commonly used antihypertensive drugs.

4-9. Elderly community health service into the house

To solve the medical problems of elderly, community workers contacted the medical institutions providing on-site services for the elderly, which make the elderly fully enjoy the attentive service. Renminlu community health services mainly offers the support of medical institutions of retirement for the elderly mobility registration, on behalf of the prescription, the agency admitted to hospital, health counseling, medical treatment, accompanied by care services.

4-10. Home care "Sunshine Services Scheme"

Old people are living alone or retirement can easily make them feel lonely. In order to enrich their life the



community started the "Sunshine Service" program for the elderly to create a rich, happy and secure old life. To provide the elderly home care services, facilities, venues and welfare. In epidemic or seasonal temperature instability season, the community contacted elderly residents by telephone, small nursing home visits and other forms. On regular time, community staff checked the safety of water and electricity. Conduct mobile library, theater building, buy some books and CDs which the elderly loved, rent them to the elderly freely use in order to enrich their spiritual world. Four communities have set up libraries, paintings court, chess room, fitness room, health stations and other facilities to provide services for the elderly, leisure venues. Representatives from the community residents, volunteer, buildings established a long network of community safety, daily living of older persons regularly conduct safety mutual aid and a relatively young community volunteers and empty-nesters "twinning", the daily understanding of the security of empty-nesters situation.

5 - Traffic Injury Prevention Project

5-1. Traffic Safety education program community for residents

2010 is mainly to strengthen the



traffic safety education of motor vehicle drivers, non-motor vehicles, pedestrians. To carry out simulation of road traffic safety class, making road traffic model. Combined with video scene of the accident, residents carry out lectures of traffic safety knowledge, publishing forum with the theme of "Review of the week" the online traffic, producing 78 banners, 52 display panels, replace the information windows, guiding the private car driver, putting an end to drunk driving or fatigue driving.

5-2. Carry out the project activity "do not drink driving, driving without drinking"

2010, throughout the country in carrying out activities to eliminate drunk driving, Renming Road traffic safety committee especially focused on the drivers who had drunk driving or deduction of 12



points, holding lectures 6 times, 30 people for each time, totally of 180 drivers had attended the training. Mobilize community volunteers joined the activities "do not drink and drive" in restaurants. Each restaurant set up one volunteer to urge people not to drive after drink, and posting safety posters to remind drivers. Through this action, the number of accidents of drunk significantly reduced.

6 - High-risk environments and high-risk people

6-1. Project of centre for the comprehensive management of social security law into the building



In 2010, committee of social security comprehensive management of Renminlu area decided to set up center of comprehensive management of social order. the work center. Comprehensive management work is in the charge of center street party work in the streets, offices and the district committee for comprehensive management of the leadership, led by the Office of management of social security, to take joint and coordinated approach building area more than 50 units. Through 50 telephones, establishing network platform for all legal advice, information dissemination and collection of aggregated.

6-2. Fire prevention projects

The number of permanent residents of the Renminlu community is near ten thousand. Home fire prevention and control, the focuses are the buildings more than 110 and the residents in high-rise buildings. Enhance the inspection for



High-rise building, building and improving, "Fire volunteers" prevention and control system. Organizing community volunteer to clear the corridor of flammable materials, fire fighting facilities, identifying fire hazards and improve people awareness.

6-3. Workplace injury prevention programs

Strengthen the safety monitoring efforts of "six small units" and urge manufacturers to secure self-examination routine. Community, "Six small" enterprises primarily existed security risks:



electrical safety, gas safety and fire safety. In order to improve the "six small" operators safety awareness, community workers organize safety training for them more than 200 people and fire safety drills. Community members combined fire, urban management, safety supervision and other agencies of the "six small" units visited and checked. If there is a security risk, advices and rectification and other relevant information will be given.

6-4. Disabled Injury Prevention Project

Establish long-term mechanism for



people with disabilities to provide one to one service, and deliver "one to one" contact cards and medical discount cards. Install barrier-free facilities and "family pass" emergency call system for them. In order to promote employment of disabled persons, employment investigations were carried out. With the help of joint forces of society, employment skill trainings for disabled persons were held which includes Chinese knot weaving, fabric painting, computer and other skills which can help people with disabilities to have accesses to a variety of employment information. To strengthen safety education and rehabilitation of persons with disabilities, communities regularly held lectures on safe medication, home safety manual issued. Nursing teachers were hired to provide medical rehabilitation for the disabled, psychological counseling, coaching and other services.

6-5. Carry out safety hazards early warning system to identify high-risk environment

Business and top floor buildings are the most concentrated area of fire hazards. Most of the housings are for the vast majority of rental business, which are rent by many migrants for living, management and storage where security risks are

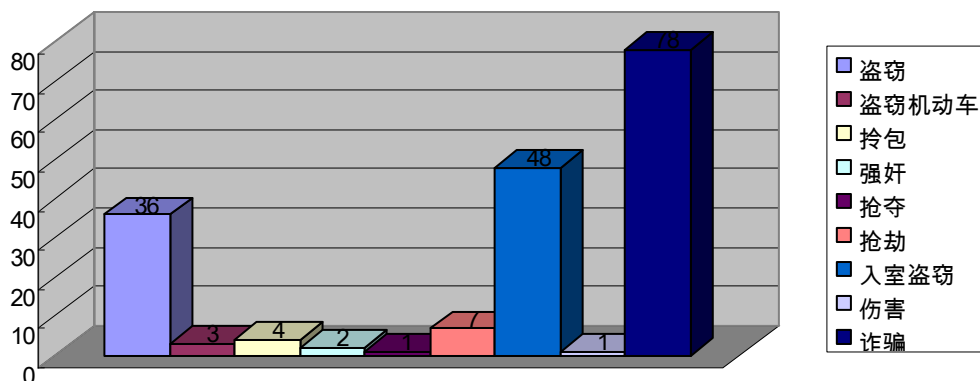


existed with the characters of dynamic and decentralized. There are more than 1,000 shops and restaurants in Renminlu where many security risks are existed in a dynamic diversification. In order to control the dynamic diversification of hazard area for real-time, in early 2010, a special work of fire safety hazards conference was held, set up a "Renminlu fire safety management group", and organized 40 volunteers who divided into four groups according to the community. Since February, they began to come into community where more than 70 residential buildings to eliminate hidden fire safety dangers in order to prevent big accidents.

7 - Information and assessment of damage

7-1.2009 of the situation of public order of Renminlu (Renminlu police station)

Analysed figure of Renminlu police station of social security



Renminlu police station on the merits of social security statistics

Type	Jan	Feb	Mar	Apr	May	June	July	Aug	Sept	Oct	Nov	Dec	Account
Theft	4	2	4	2	3	3	5	4	2	0	4	3	36
Theft of auto	0	0	2	1	0	0	0	0	0	0	0	0	3
Thief	0	0	0	0	1	1	0	2	0	0	0	0	4
Rape	1	0	1	0	0	0	0	0	0	0	0	0	2
Rob	0	0	0	0	0	0	1	0	0	0	0	0	1
Loot	1	0	1	1	1	0	1	0	0	0	2	0	7
burglary	1	5	5	6	5	5	6	3	5	0	3	4	48
Injury	0	0	0	1	0	0	0	0	0	0	0	0	1
Fraud	7	3	8	3	4	7	11	12	7	2	10	4	78
Account	14	10	21	14	14	16	24	21	14	2	19	11	180
Date : 31st, December, 2010													

From the record of police station 2010, the most problems people experienced are theft and fraud issues of elderly, so in the work of 2010, the problems of burglary and fraud of the elderly will be the emphases of community security works.

7-2. 2009 the number of people from the road traffic accident

Statistics Unit: Transportation Battalion of Zhongshan District		Statistical time: Jan—Feb, 2010			
No.	Time	Site	Reason	Situation of injuries	
				Sex	Age
1	21:44, 2nd, Feb, 09	East of Changjiang road	Death	Male	76
2	8:50, 6 th , Jan, 09	North of Dalian harbor	Death	Male	50
3	23:08, 13rd, 09	Intersection of Shugang Road	Injury	Male	28

There are 3 traffic accidents in area of the Renminlu 2010, 2 deaths and 1 injured. Compared with the same period last year, the number of injury in accidents decreased by 1, the number of death decreased by 2. From the time of accidents it can be seen that there is an upward trend of the incident from 8 am to 23:00, the incident concentrate on the intersection and bridge road junction. The accidents were always caused by grab-line between motor vehicle traffic and pedestrians, especially the accident caused by elderly across the road. So the traffic propaganda should be increased for the elderly at home.

7-3. 2010 of the community, Renminlu, the number of fire accidents

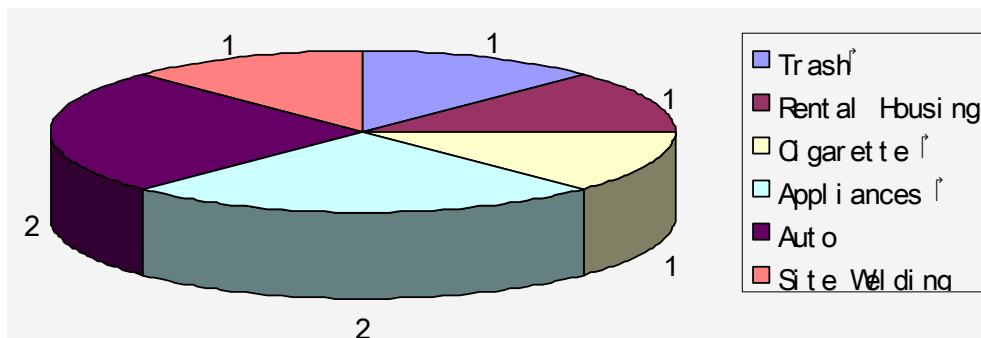
Statistics Unit: Office of the Fire Mountain

People's Road area in 2010 the number of reports of fire accidents

Fire type	Jan	Feb	Mar	April	May	June	July	Aug	Sept	Oct	Nov	Dec	Account
Trash		1	0	0	0	0	0	0	0	0	0	0	1
Rental Housing	0	0	0	0	1	0	0	0	0	0	0	0	1
Cigarette	0	0	0	1	0	0	0	0	0	0	0	0	1
Appliances	0	1	0	0	0	0	0	0	0	0	1	0	2
Auto	0	0	0	0	1	0	0	0	1	0	0	0	2
Site Welding	0	0	0	0	0	0	0	0	0	1	0	0	1
Account	0	2	0	1	2	0	0	0	1	1	1	0	8

Date: 31st, Jan, 2010

People's Road area since 2010, the number of fire accidents map



There are 8 fires occurred in the area of Renminlu 2009 of which 2 fires caused by appliances category, accounting for 25%, motor vehicle ignition 2, accounting for 25%, cigarette 1, site welding 1, , garbage cited fuel 1, the rental housing from the ignition 1.

7-4. Number of accidents for product safety (2010)

Statistics Unit: Administration of Work Safety of Zhongshan District

2009 People's Road area, production safety, fatalities, and 0 from the same period last year which showed a steady trend.

7-5. Hospital injury surveillance report (2010)

Statistical Analysis Department: Disease and Health Bureau of Zhongshan District

1. Monitoring methods

Monitoring Hospital: Dalian Friendship Hospital.

Registered by the "national injury surveillance report card" which established by Chinese Center for Disease Control and Prevention of Chronic Diseases Centre. The staff who fill in the report cards are the doctor or nurse who have been professional trained and passed the examination.

2. The results of injury surveillance

2-1 Data of demographics injury population

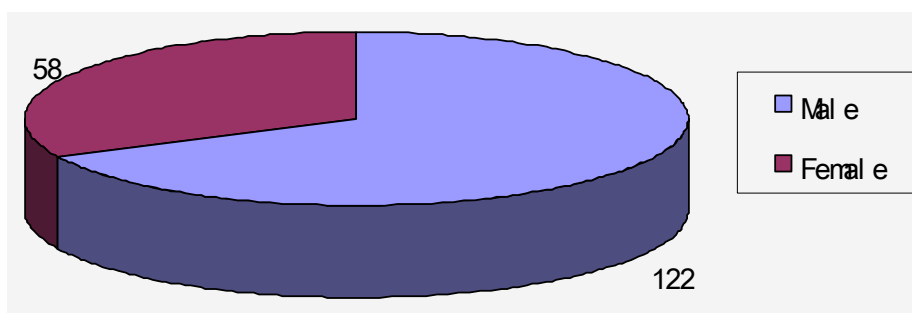
2-1.1 Hurt people by gender distribution:

The number of 180 injuries in Renminlu community 2010, of whom 122 were male, accounting for 67.7%, female 58, accounting for 32.3%, the proportion of male is higher than female of injuries.

Table 1. The gender composition of population damage

	Male	Female	Account
Num	122	58	180
Composing	67.7	32.3	100.0

Fig 1. Groups the gender composition of harm

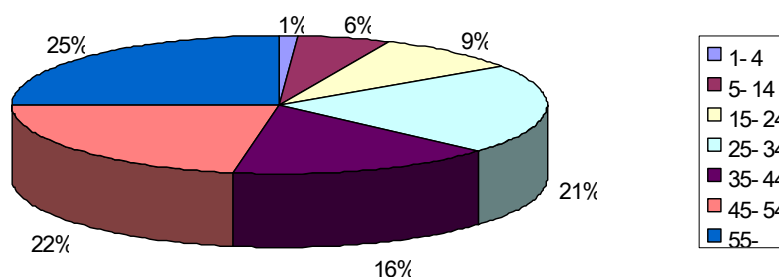


2-1.2 The age groups injury: the crowd older than 55 account for the highest proportion of injury, accounting for 25%, followed by the 45-54 age group, accounting for 22.2%.

Table 2. Distribution of injuries by age group

Age	1-4	5-14	15-24	25-34	35-44	45-54	55-	Account
Num	2	10	16	38	29	40	45	180
Composing	1.1	5.6	8.9	21.1	16.1	22.2	25	100

Fig 2. Distribution of injuries by age group



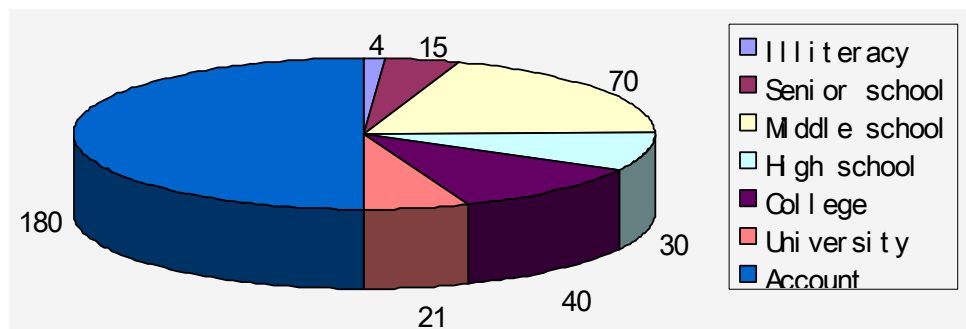
2-1.3 Distribution of injuries among education: high school education

account for the most of the injuries up to a total of 70, accounting for 38.9%, followed by people with tertiary education, a total of 40, accounting for 22.2%.

Table 3. Distribution of injuries among the educated

	Illiteracy	Seni or school school	Middle school	High school	College	University	Account
Num	4	15	70	3	40	21	180
Composing	2.2	8.3	38.9	1.6	22.2	11.7	100.0

Fig 3. Distribution of injuries among the educated

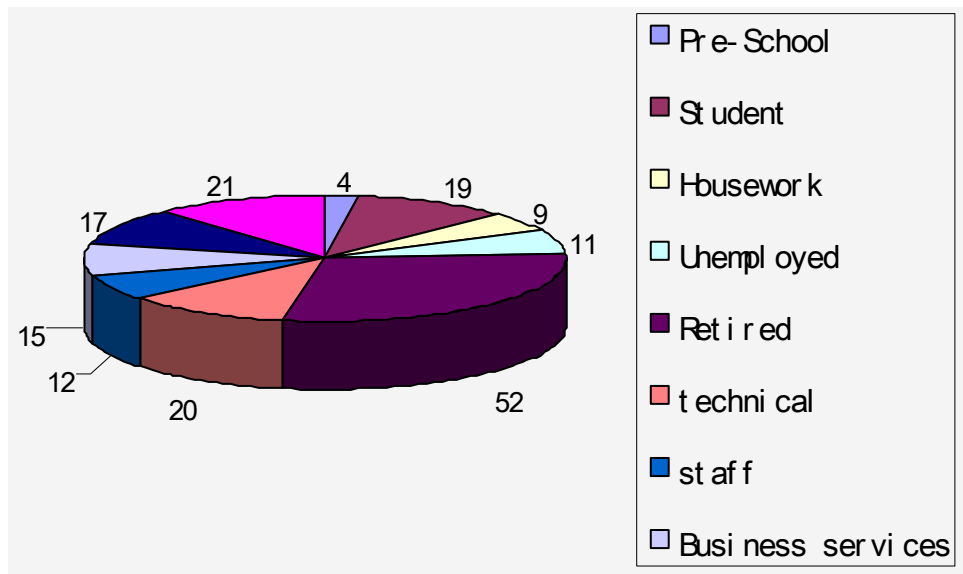


2-1.4 injury population distribution by occupation: retired people account for the most people up to a total of 52, accounting for 29%, followed by other groups, a total of 21, accounting for 11.7%.

Table 4 Distribution of injury by occupation groups

	Pre-School	Student	Housework	Unemployed	Retired	technical staff	Business services	Production transportation	Other	Account	
Num	4	19	9	11	52	20	12	15	17	21	180
Composing	2.2	10.6	5.0	6.1	28.9	11.1	6.7	8.3	9.4	11.7	100.0

Fig 4. Distribution of injury by occupation groups



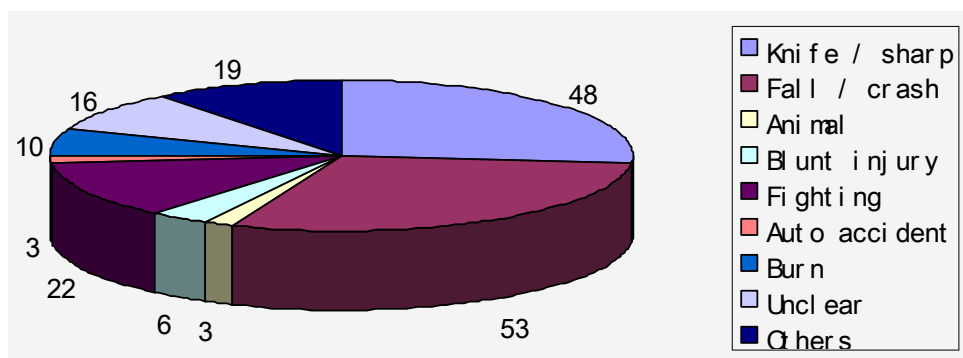
2.2 Injuries Situation

2-2.1 Distribution of various types of injuries: causes of injury in the distribution to fall / crash occurred are the largest, 53, accounting for 29.4%, followed by knives / sharp injuries, accounting for 26.6%.

Table 5. Distribution of different type of injury

Type of injury	Num	Proportion
Knife / sharp	48	26.6
Fall / crash	53	29.4
Animal	3	1.7
Blunt injury	6	3.3
Fighting	22	12.2
Auto accident	3	1.7
Burn	10	5.6
Unclear	16	8.9
Others	19	10.6
Account	180	100.0

Fig 5. Distribution of different type of injury

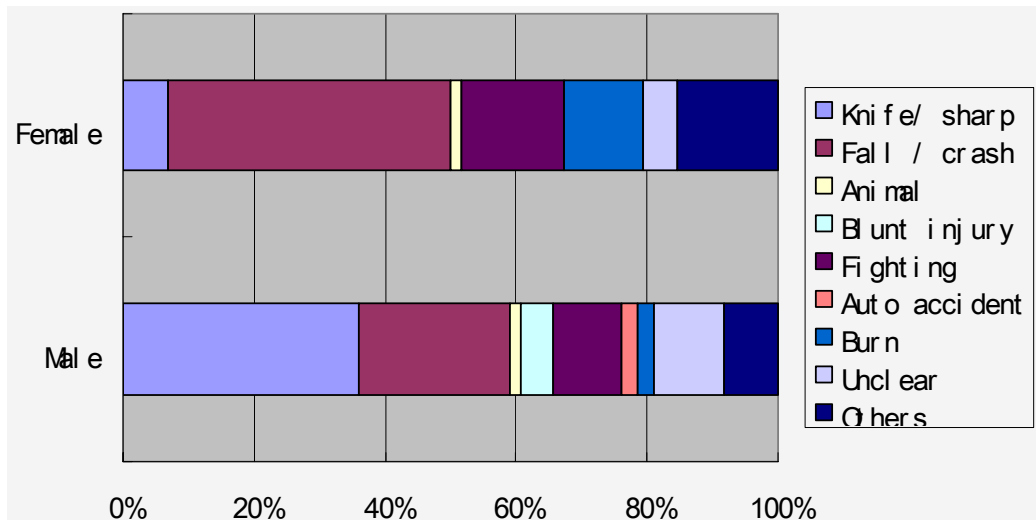


2-2.2 injury causes and gender distribution: the most of male causes injury is knife / sharp injuries, accounting for 36.1%, followed by falls / fall, 23%. Of women the most injuries are from falls / fall, accounting for 43.1% , followed by the man fighting injuries, accounting for 15.5%. For men the injuries in the knife / sharp, blunt injury, etc. are higher than women. Women in the fall / fall injuries, burns are higher than men.

Table 6. Distribution of causes and sex

	Male		Female		Account	
	Num	%	Num	%	Num	%
Knife/ sharp	44	36.1	4	6.9	48	26.7
Fall / crash	28	23	25	43.1	53	29.4
Animal	2	1.6	1	1.7	3	1.7
Blunt injury	6	4.9	0	0	6	3.3
Fighting	13	10.7	9	15.5	22	12.2
Auto accident	3	2.5	0	0	3	1.7
Burn	3	2.5	7	12.1	10	5.6
Unclear	13	10.7	3	5.1	16	8.9
Others	10	8.2	9	15.5	19	10.6
Account	122	100.0	58	100.0	180	100.0

Fig 6. Distribution of causes and sex



2-2.3 Injury causes and age distribution

Injury causes and age distribution according to population aged 1-14. The highest proportion of injury is fall and crash, respectively, accounting for 33.3% and 50%. For 15-24 years old people, the highest of injury is knife and sharp injuries, accounting for 35.4%, followed by fall / crash and blunt injuries, respectively, accounting for 30.7% and 17.3%. For 35-54 year-olds people, the highest proportion of injury is knife / sharp, 30% of all proportion more than 55 people over the age of injury is the highest percentage of falls / fall injury, accounting for 61.6%, followed by motor vehicle accidents, accounting for 17.6%.

